

# Cape tulip

## How and when to control

**One-leaf Cape tulip (*Moraea flaccida*) is a significant agricultural and environmental weed. All parts of the plant are poisonous to grazing animals.**

One-leaf Cape tulip (*Moraea flaccida*, formerly known as *Homeria flaccida*) is a significant agricultural and environmental weed. All parts of the plant are poisonous to grazing animals.

One-leaf Cape tulip has long, strappy leaves and salmon pink-orange (occasionally yellow) flowers. The leaves die back completely over summer.

This plant is difficult to manage as it reproduces through both corms (a type of bulb) and seed. It may remain dormant for 5-10 years until favorable conditions stimulate germination. Up to 60% of the corms may remain dormant each season. Therefore control needs to be repeated for several seasons to ensure all corms have been treated.

The effectiveness of control is dependent on the situation and time of the year. However good results can be achieved from the right method at the right time. See the Cape Tulip Control Options section for the best control methods for your particular situation.

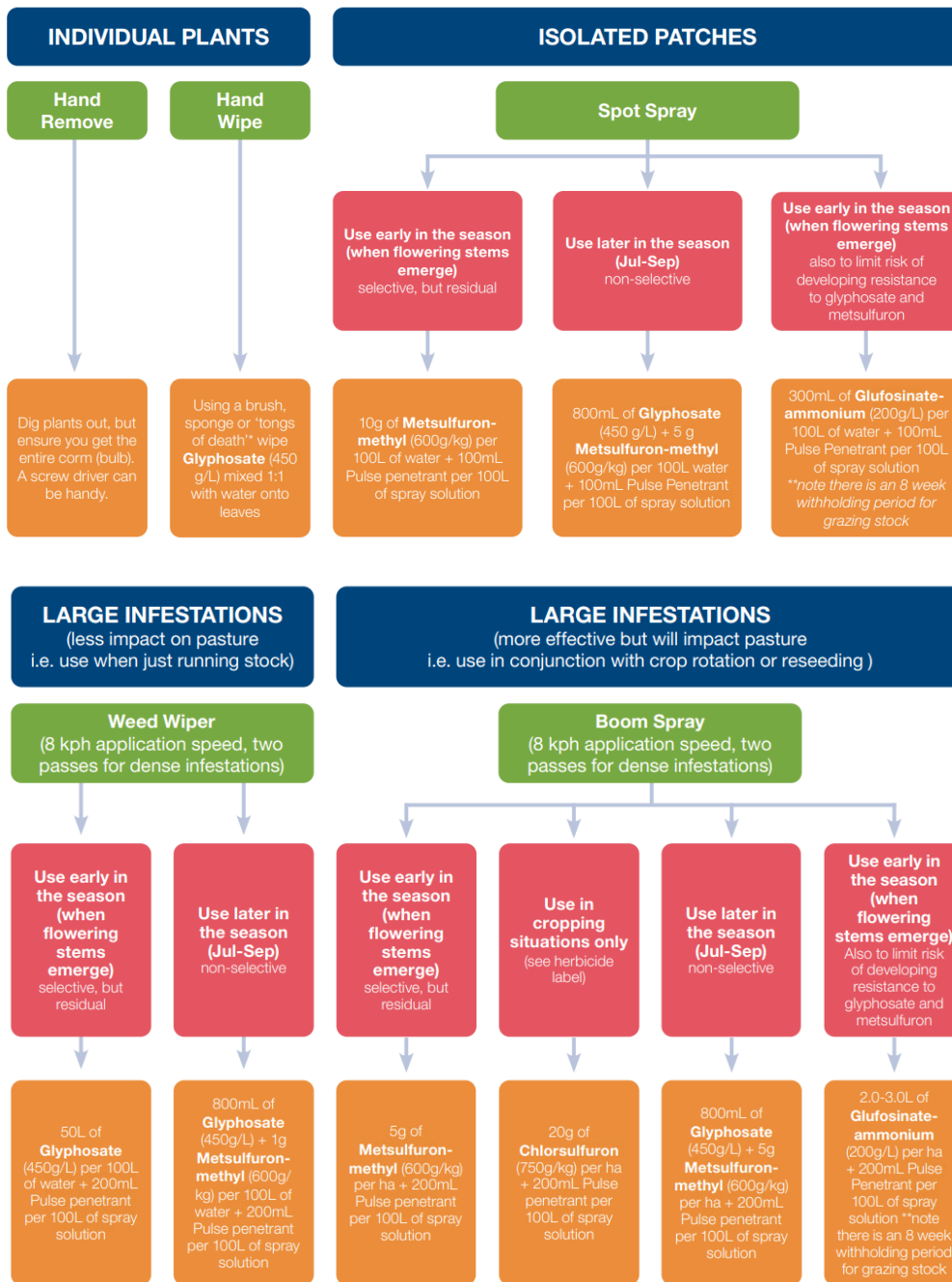


*Photos courtesy of Kangaroo Island Landscape Board*

### CAPE TULIP CALENDAR

| Summer        |     |     | Autumn                             |     |     | Winter                                    |     |           | Spring   |     |     |
|---------------|-----|-----|------------------------------------|-----|-----|---|-----|-----------|----------|-----|-----|
| Jan           | Feb | Mar | Apr                                | May | Jun | Jul                                       | Aug | Sep       | Oct      | Nov | Dec |
|               |     |     | Leaves emerge (after Autumn rains) |     |     | Flowering stems emerge                    |     | Flowering |          |     |     |
|               |     |     | CONTROL – hand remove              |     |     |   |     |           |          |     |     |
|               |     |     | CONTROL – metsulfuron-methyl       |     |     |   |     |           |          |     |     |
|               |     |     |                                    |     |     | CONTROL – Glyphosate + metsulfuron-methyl |     |           |          |     |     |
|               |     |     |                                    |     |     | CONTROL – Glufosinate-ammonium            |     |           |          |     |     |
| Plant dormant |     |     |                                    |     |     |   |     |           | Seed set |     |     |

**CAPE TULIP CONTROL OPTIONS**



**Further information**

Further information is available through Landscapes Hills and Fleurieu

**Mount Barker Office:** Cnr Mann & Walker streets, Mount Barker, 5251 (08) 8391 7500

**Email:** [hf.landscapeboard@sa.gov.au](mailto:hf.landscapeboard@sa.gov.au)



Keep in touch with our activities through Facebook [@HFLandscapeSA](https://www.facebook.com/HFLandscapeSA)

[landscape.sa.gov.au/hf](https://landscape.sa.gov.au/hf)