

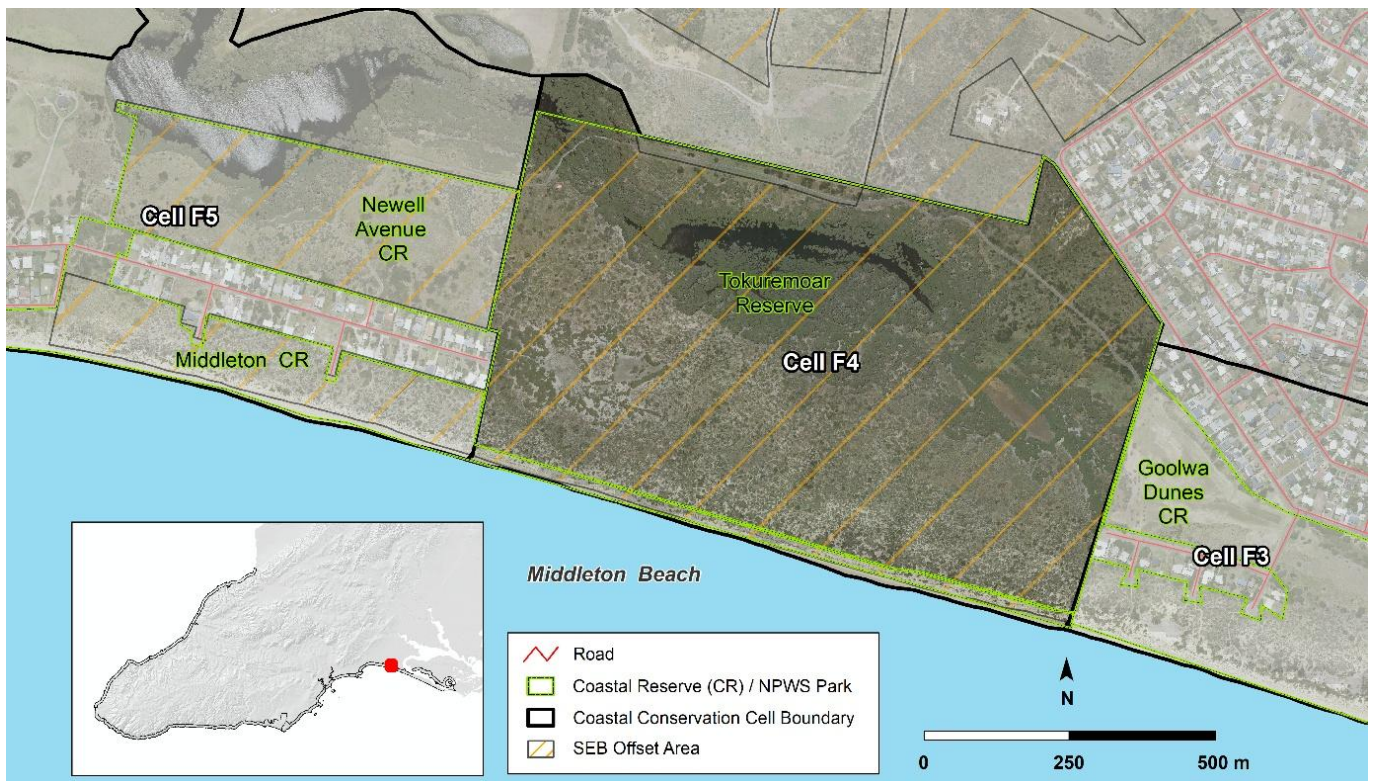
## Tokuremoar (Tokuremoar) Reserve

### Cell F4

#### Overview

This cell encompasses the Tokuremoar Reserve which supports the largest remaining intact patch of Swamp Paper-bark (*Melaleuca halmaturorum*) woodland and associated samphire community on the southern Fleurieu. It is, therefore, a regionally significant area of coastal shrubland for conservation as it supports a number of

nationally and state-rated fauna, flora and ecological communities. Located within a highly developed urban area, the reserve is threatened by pest plant and animal invasion, stormwater fluctuations and altered hydrological conditions, which in turn threaten existing plant communities and habitats.



## Cell detail

This cell extends from the western boundary of Tokuremoar Reserve (Newell Avenue), approximately 1km to the eastern boundary (Treleven Place, Goolwa). This cell is in the Alexandrina Council local government area.

## Tenure, Land Use and Values

This cell is a Crown Lands Reserve, managed by the National Parks (NPWSSA), including the foreshore (the Planning and Design Code includes the foredune only as a conservation zone). Since 2012, the waters surrounding this cell are within the boundaries of the Encounter Marine Park. There are areas of adjoining Heritage Agreement (ref HA1533, HA29 and HA37) on private land that add to the total areas of contiguous habitat and native vegetation protected in the area (59.36 Ha), including 2.8 Ha within the cell boundary. Multiple surrounding land parcels to the north and east of this cell are also under Heritage agreements (public and privately owned). The Encounter Bikeway crosses the cell on its northern side and is heavily used for recreational travel (cyclist and walking shared trail).

The entire cell (as well as Newell Ave Reserve and the Crown Reserve (see F5) and adjoining private lands) are proclaimed a Significant Environment Benefit (SEB) Areas (Ref 2012\_3009) that have protection under the *Native Vegetation Act 1991*.

Native title has been determined for Ngarrindjeri people over land and sea Country within this cell under the *Native Title Act 1993 (Cth)*.

This small area provides an invaluable glimpse of the varied habitats of the south coast of the Fleurieu before development. It is particularly important in supporting a variety of habitat types, including coastal woodland, wetland, dunes, sedgeland and saltmarsh.

The cell is utilised for recreational surfing, fishing, bike riding, bird watching, dog walking (on and off leash), conservation volunteering, education and walking. The beach is an important habitat and fishing area for Western Australian Salmon (*Arripis truttaceus*), Mulloway (*Argyrosomus japonicus*), Yelloweye Mullet, (*Aldrichetta forsteri*), and Goolwa Cockle/Pipi (*Plebidonax deltoides*) (Bryars 2013).

The Goolwa Coastcare Group have undertaken works across this and neighbouring cells for more than 18 years, making a substantial contribution to the conservation and protection of areas through valuable on-ground bushcare, revegetation and community awareness activities. Friends of the Hooded Plover Fleurieu Peninsula (supported by BirdLife Australia) and Team Oystercatcher volunteers (SA Shorebird Foundation) monitor and raise awareness of beach nesting and shorebird species within the cell.

## Landforms

“This entire beach is composed of fine sand and exposed to waves averaging over 2m. These break across a 500m wide double bar surf zone, characterized by numerous spilling breakers and substantial wave set-up and set-down at the shoreline and, during lower wave conditions, widely spaced rips.” (Short, 2001, p.98). It features a low dune barrier, backed by brackish coastal swamp within an aeolianite swale and rise at the inner edge of the cell (Caton et al 2007).



*Tokuremoar Reserve, formerly the Goolwa Conservation Park (Encounter bikeway and Goolwa Waste Transfer Station immediately landward) (Coast Protection Board, March 2024)*

## First Nations cultural heritage and connection to land and sea Country

This cell holds high cultural value and significance for the Ramindjeri people of the Ngarrindjeri Nation. It forms part of their Dreaming stories and contains numerous stories, places, and artefacts of cultural importance. Ramindjeri cultural heritage is present throughout the entire cell, everywhere you tread. The Ramindjeri lived, hunted, played, swam, and danced here. Those working within and restoring these areas may encounter artefacts or evidence of cultural significance to the Ramindjeri people and the broader Ngarrindjeri Nation. These areas must be known, recognised, respected, and protected.

Creeks, wetlands, estuaries, dunes, cliff lines, islands and coastal areas are important gathering places that support a variety of habitats and food sources essential for sustaining and protecting Nga:tji. Nga:tji are the personal totems of the Ngarrindjeri people. They embody deep cultural values, symbolising kinship, spiritual protection, and an embedded responsibility to care for the land, waters, and ecosystems they inhabit.

Landscape features and culturally significant sites within this cell include the wetlands that support a stand of Swamp Paper-bark (*Melaleuca halmaturorum*) trees up to 500 years old. Camping places, midden sites, stone tools and artefacts are located throughout the sandhills.

This cell is also a particularly important site in the Ngurunderi Creation and Dreaming story, which tells of the Ngarrindjeri people's creation of the land and waters, including the River Murray and its mouth, Kandukang (west) and Tapalwora (east). This ancestral narrative extends westward along the southern coast of the Fleurieu Peninsula, encompassing the rugged shoreline, estuaries, and coastal landscapes all the way to Cape Jervis (Parrewar-angk). These areas hold deep cultural and spiritual significance for the Ramindjeri people, with Dreaming tracks, songlines, and important sites embedded throughout the region.

The coastline with its cliffs, beaches, and native vegetation reflects Ngurunderi's journey as he shaped the land, rested at key locations, and followed the tracks of his wives. Cape Jervis (Parrewar-angk) marks an important point in this story, serving as both a physical and spiritual place in the landscape. It connects the mainland to Kangaroo Island (Ngurungau), continuing the cultural narrative of creation, movement, and connection to Country.

Within this cell, the Dreaming story tells how Ngurunderi created the wetland and rested at Kutiangk (Goolwa), while his wives passed ahead toward Ratalang (near Port Elliot).

Please respect that cultural concepts and content included in this plan are the Aboriginal Cultural and Intellectual property (ACIP) of the Ramindjeri people of the Ngarrindjeri Nation (provided by Cedric Varcoe, Ramindjeri Cultural Leader living on Country) (cells 1-20). They may not be used or adapted by any other parties without consent.

## Terrestrial biodiversity

### Whole Cell

Tokuremoar Reserve is the largest area on the south coast of predominately intact Swamp paper-bark (*Melaleuca halmaturorum*) woodland, with brackish coastal swamp vegetation in swales, and low-lying samphire, saltmarsh adjoining coastal dune grasses and shrubs, and is of very high local, regional and state significance. All plant and animal conservation layers score medium to high values for this cell. The highest are for vegetation shape, size and connectivity, butterfly larvae habitat, reptile habitat, and priority of vegetation assemblage based on rarity within South Australia.

Swamp Paper-bark (*Melaleuca halmaturorum*) Woodland is found in low-lying, often saline parts of the cell, and extends into Newell Avenue Reserve (cell F5) in two sections, with the Newell Avenue Reserve containing a significant patch of saltmarsh that becomes inundated for extended periods (Simon and Bain 2015). This vegetation community contains high numbers of rare and threatened plant species for such a relatively small area. The age of many existing Swamp Paper-bark (*Melaleuca halmaturorum*) within this cell has been estimated by the South Australian Herbarium to be over 500 years old (*Tokuremoar Reserve Management Plan Part A, 1998*).

Locally and regionally significant native plants recorded by Simon and Bain (2015) within this cell include Coast Picris (*Picris angustifolia* ssp. *angustifolia*), Cup Wattle (*Acacia cupularis*), Austral Trefoil (*Lotus australis*), Coast Bush-everlasting (*Ozothamnus turbinatus*), Coast Cherry (*Exocarpos syrticola*), Annual Celery (*Apium annuum*), Thatching Grass (*Gahnia filum*), Rough Raspwort (*Haloragis aspera*), Trailing Hemichroa (*Hemichroa pentandra*), Thread Pennywort (*Hydrocotyle capillaris*), Clustered Lawrenzia (*Lawrenzia glomerata*), Salt Lawrenzia (*Lawrenzia spicata*), Thorny Lawrenzia (*Lawrenzia squamata*), Shiny Swamp-mat (*Goodenia radicans*), Creeping Monkey-flower (*Thyridia repens*), Round-leaf Wilsonia (*Wilsonia rotundifolia*), Salt Angianthus (*Angianthus preissianus*), Creeping Brookweed (*Samolus repens*), Muntries (*Kunzea pomifera*), Salt Sand-spurrey (*Spergularia marina*) and Prickly Arrowgrass (*Triglochin mucronata*).



Tokuremoar Dunes - Coast Cushion Bush (*Leucophyta brownii*) +/-  
Coastal Wattle (*Acacia longifolia* ssp. *sophorae*) Low Shrubland (B Simon)

Through the course of restoration works on Tokuremoar Reserve the following additional species have been recorded Yellow-club Spider-orchid (*Caladenia verrucosa*), Early Nancy (*Wurmbea dioica* ssp.), Cotton groundsel (*Senecio quadridentatus*), Sun orchid (*Thelymitra* sp.), Rough Raspwort (*Haloragis aspera*).

Adjoining areas of the cell to the northern side of the reserve contain Drooping Sheoak (*Allocasuarina verticillata*) Low Woodland. It occurs in a small area of Tokuremoar Reserve (Figure 4.1) and a significant patch can be found in the Goolwa Waste and Recycling Depot. This vegetation community is locally significant, with only few examples remaining in the Alexandrina Council area. Additionally, *Hakea mitchellii* +/- *Acacia dodonaeifolia* Shrubland and *Lomandra effusa* +/- *Lepidosperma* spp. +/- *Gahnia* spp. +/- *Imperata cylindrica* Low Sedgeland is recorded on the Goolwa Waste and Recycling Depot lands. Both have significant conservation value, with the *Lomandra* grassland vegetation community likely to be endangered locally, possibly fitting under the definition of Iron-grass Natural Temperate Grassland of South Australia due to the dominance of *Lomandra* and sedge species in this site and high prevalence of *Lomandra effusa* (Simon and Bain 2015).

Despite the limited size, this cell supports remnant vegetation that offers excellent habitat value for a range of fauna species. Western Grey Kangaroos (*Macropus fuliginosus*), Short-beaked Echidna (*Tachyglossus aculeatus*), Common Brushtail Possum (*Trichosurus vulpecula*), Common Ringtail Possum (*Pseudocheirus peregrinus*) and Swamp Rats (*Rattus lutreolus*), listed as rare under the *National Parks and Wildlife Act 1972*, have all been recorded in this cell. Recent sightings of Swamp Wallaby (*Wallabia bicolor*) have been recorded within the reserve as well as locally on Hindmarsh Island.



*Swamp Rat (Rattus lutreolus) (M Stokes)*

Over 90 native bird species have been recorded in Tokuremoar Reserve, through numerous surveys since 2012, with several having conservation significance. The highest number and diversity of species were recorded when the area has been in flood and included a wide range of wetland bird species. The state vulnerable Brown Quail (*Coturnix ypsilophora*), Banded Stilt (*Cladorhynchus leucocephalus*), Hooded Plover (*Thinornis cucullatus cucullatus*); the state rare Cape Barren Goose (*Cereopsis novaehollandiae*), Australasian Shoveller (*Spatula rhynchotis*), Glossy Ibis (*Plegadis falcinellus*), Latham's Snipe (*Gallinago hardwickii*), and Elegant Parrot (*Neophema elegans*) have been recorded in this cell.

In addition to the nationally vulnerable Hooded Plover (*Thinornis cucullatus cucullatus*), suitable foraging habitats exist for Pied (*Haematopus longirostris*) and Sooty Oystercatchers (*Haematopus fuliginosus fuliginosus*); Both species, with conservation rating of rare in SA, use the beach as an important foraging site for Goolwa Cockles/Pipis and other marine invertebrates (beach worms). Red-capped Plovers (*Charadrius ruficapillus*) that are semi-colonial nesters are also recorded in this cell. Seagrass wrack (also known as Beach cast wrack) found regularly on these beaches has an important ecological function recycling nutrients back to coastal waters as well as protection and stabilisation of the shoreline and coastal dunes by acting as a trap that binds drifting sands and reduces sand erosion during winter (PIRSA 2014). Beach wrack also provides an important role as habitat and shelter for Hooded Plovers (*Thinornis cucullatus cucullatus*) and Pied (*Haematopus longirostris*) and Sooty Oystercatchers (*Haematopus fuliginosus fuliginosus*) as well as other shorebirds and juvenile fish. Beach cast wrack collection within Encounter Marine Park is prohibited in all zones except general managed use zones. Therefore, no removal of beach wrack is permitted in this cell or the Encounter Bay area.



*Pied Oystercatchers (Haematopus longirostris) are often seen feeding across the shores of Goolwa beach (K Bartley)*

Local dune systems provide refuge and likely valued habitat for a range of seabird species, including the White-bellied Sea Eagle (*Haliaeetus leucogaster*), Eastern Osprey (*Pandion haliaetus cristatus*), Little Black Cormorant (*Phalacrocorax sulcirostris*), Black-faced Cormorant (*Phalacrocorax fuscescens*), Pacific Gull (*Larus pacificus georgii*), Silver Gull (*Chroicocephalus novaehollandiae*) and Kelp Gull (*Larus dominicanus*). Irregular sightings of a range of pelagic birds are also reported in this cell, including albatrosses, petrels, shearwaters and gannets.

Reptile habitat is notable within the cell, providing refuge for species which are dependent on habitats only found in coastal areas (Caton et al 2007). Frog and reptile species are also commonly recorded within the cell, including Common Froglet (*Crinia signifera*), Spotted Marsh Frog (*Limnodynastes tasmaniensis*), Banjo Frog (*Limnodynastes dumerilli*), Painted Frog (*Neobatrachus pictus*), Painted Dragon (*Ctenophorus pictus*), Bearded Dragon (*Pogona barbata*), Lined Worm Lizard (*Aprasia striolata*), Olive Snake-lizard (*Delma inornata*), Garden Skink (*Lampropholis guichenoti*), Eastern Bluetongue (*Tiliqua scincoides*), Sleepy Lizard (*Tiliqua rugosa*) and Eastern Brown Snake (*Pseudonajatextilis*) (Simon and Bain 2015).



*Sleepy Lizard (Tiliqua rugosa) (B Doyle)*

The cell rating for butterfly larvae habitat was the highest in the region (Caton et al 2007), including being highly significant as breeding habitat for the Mottled Grass Skipper (*Anisynta cynone cynone*) (Grund, 1997). Other butterfly species of conservation concern known to exist within the cell include Variable Sedge-skipper (*Hesperilla donnysa*), Wood White (*Delias aganippe*), Common Xenica (*Geitoneura klugii*), Amaryllis Azure (*Ogyris amaryllis meridionalis*) and multiple common species that are observed across the Fleurieu Peninsula (Stolarski 2024). Mottled Grass Skipper (*Anisynta cynone cynone*) is very localised and restricted to coastal areas where its larval food plants, *Poaceae* (Grasses), both native and introduced, are present. *A. cynone cynone* has a patchy distribution, occurring at; Hindmarsh Island, Sir Richard Peninsula, Goolwa foreshore, Surfers to Goolwa Dunes, Port Elliot, Victor Harbor including Granite Island, and Newland Head CP (Stolarski 2024).



*Bitter-bush Blue (Theclinessthes albocinctus) (M Endacott)*

Conservation efforts for increasing habitats through plantings of *Gahnia filum* for Yellowish Sedge Skipper (*Hesperilla flavescens*) have been undertaken at Tokuremoar Reserve, Hindmarsh Island and Goolwa Township (Stolarski 2024). Bitter-bush Blue (*Theclinesthes albocinctus*), whilst locally common at times, is subject to restricted population sites supporting Coast Bitter-Bush (*Adriana quadripartita*), its only larval host plant, and if not available would not be able to exist. The butterfly is restricted to cells F4, F15, F19, F23 & F24 (Storlaski 2024).

Three *Ogyris* butterfly species; *O. olane*, *O. genoveva* and *O. amaryllis meridionalis* require *Amyema* spp. (mistletoes) as their larval hosts and if not available would not be able to exist. Stolarski (2024) recommended mistletoes should be retained in the environment, and where possible additional seeding of mistletoes is undertaken across cells to enhance localised *Ogyris* populations.

Suitable feeding and roosting habitat for the critically endangered, Orange-bellied Parrot (OBP) (*Neophema chrysogaster*) occurs in Tokuremoar Reserve (Simon and Bain 2015). The species is listed as critically endangered under the Environment Protection and Biodiversity Conservation (EPBC) Act 1999, and recent local sightings of individuals were recorded on Hindmarsh Island and Coorong in 2021, 2023 and 2024. This species breeds over summer in southwest Tasmania, then migrates to the mainland in winter to coastal habitats in southeastern Australia. Foraging habitats include saltmarsh vegetation associations, tussock grassland and *Gahnia* spp. sedgeland, while dense Swamp Paper-bark (*Melaleuca halmaturorum*) thickets are valuable roosting habitats and located adjacent to existing saltmarsh foraging habitats (Ehmke et al 2009).

Samphire (*Tecticornia* and *Salicornia* spp.) Low Shrublands within the pre-European mapping extent for this region fall within the Nationally Vulnerable community called *Subtropical and temperate coastal saltmarsh*, as listed in the EPBC Act. This ecological community is the assemblage of plants, animals and micro-organisms associated with saltmarsh in coastal regions of sub-tropical and temperate Australia (DCCEE 2013). To be considered for listing, this community needs to be under regular or intermittent tidal influence, including rarely inundated supratidal areas, intermittently opened or closed lagoons, or groundwater tidal influences. The tidal connection includes areas that are inundated by astronomical tides and also by weather assisted tides (i.e. storm surges). The plant assemblage comprises salt-tolerant herbs, succulent shrubs or grasses, and there may be large areas of bare sediment.

## Vegetation Communities

There are multiple vegetation communities within the cell (Simon and Bain 2015), see figure 4.1 including:

### Foredune vegetation

Rolling Spinifex (*Spinifex hirsutus*) +/- \*Sea Spurge (*Euphorbia paralias*) +/- \*Sea Wheat-grass (*Thinopyrum junceiforme*) Grasslands form the dominant vegetation community between Beach Road Goolwa and Treleaven Place along what is now considered the foredune.

Occasional emergent shrubs of Coast Saltbush (*Atriplex cinerea*) and Coast Bush-everlasting (*Ozothamnus turbinatus*) and patches of the near threatened Coast Sow-thistle (*Actites megalocarpa*) are scattered along the length of the foredune.

### Primary and Secondary Dune vegetation

Coast Daisy-bush (*Olearia axillaris*) +/- Coastal Wattle (*Acacia longifolia* ssp. *sophorae*) +/- Coast Beard-heath (*Leucopogon parviflorus*) Low Coastal Shrubland forms the dominant vegetation community across the current existing primary and secondary dune areas.

Coast Cushion Bush (*Leucophyta brownii*) +/- Coastal Wattle (*Acacia longifolia* ssp. *sophorae*) Low Shrubland is most prevalent in the dunes from Tokuremoar Reserve to the Cliffs carpark and also occurs west of Beach Road on Sir Richard Peninsula. Very degraded areas of this community are found along the Cliffs Carpark area towards Middleton that are currently dominated by Coast Cushion Bush (*Leucophyta brownii*) and \*Gazania (*Gazania linearis*).

Coast Daisy-bush (*Olearia axillaris*) +/- Cup Wattle (*Acacia cupularis*) Very Open Shrubland is a distinct area of vegetation occurring in the south-western corner of Tokuremoar Reserve, on an area of sand on calcrete. This low-lying area supports emergent Swamp Paper-bark (*Melaleuca halmaturorum*) and areas of Sea Rush (*Juncus kraussii*), Knobby Club-rush (*Ficinia nodosa*), Muntries (*Kunzea pomifera*), Creeping Brookweed (*Samolus repens*) and Shiny Swamp-mat (*Goodenia radicans*). Cup Gum (*Acacia cupularis*) was mostly observed growing prostrate or procumbent on the shallow sands.

### Low lying Saline areas

Swamp Paper-bark (*Melaleuca halmaturorum*) Woodland community in the project area contains an understory which is dominated by various chenopods, including Climbing Saltbush (*Einadia nutans* ssp. *nutans*) +/- Sea-berry Saltbush (*Rhagodia candolleana* ssp. *candolleana*) +/- Bower spinach (*Tetragonia implexicoma*) with open areas of Beaded Samphire (*Salicornia quinqueflora* ssp. *quinqueflora*) +/- Black-seed Samphire (*Tecticornia pergranulata*) Southern Fleurieu Coastal Action Plan 2026

*ssp. pergranulata*) Low Shrubland and Beaded Samphire (*Salicornia quinqueflora ssp. quinqueflora*) ± Austral Seablite (*Suaeda australis*) Low Open Shrubland forming several natural amphitheatres surrounded by Swamp Paper-bark (*Melaleuca halmaturorum*).

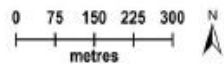
Thorny Lawrencia (*Lawrencia squamata*) +/- Beaded Samphire (*Salicornia quinqueflora ssp. quinqueflora*) +/- Black-seed Samphire (*Tecticornia pergranulata ssp pergranulata*) Low Shrubland forms a distinct community in Tokuremoar Reserve on a low-lying saline flat over a relatively small area.

Salt Lawrencia (*Lawrencia spicata*) and Clustered Lawrencia (*Lawrencia glomerata*) were observed more in small patches or single plants within the saltmarsh swamp areas of the Swamp Paper-bark (*Melaleuca halmaturorum*) Woodland areas (Simon and Bain 2015).

These vegetation communities contain high numbers of rare and threatened plant species for such a relatively small area. Since the flooding of the site in 2013, the understorey dominated by Chenopods, such as Sea-berry Saltbush (*Rhagodia candolleana ssp. candolleana*), Berry Saltbush (*Atriplex semibaccata*) and Bower Spinach (*Tetragonia implexicoma*) largely drowned and is now regenerating on the site (Simon and Bain 2015).



*Tokuremoar Reserve in flood for several months in the summer of 2012/2013 (C Jackson)*



COOLWA TO WELLINGTON LOCAL  
ACTION PLANNING ASSOCIATION INC

Legend

- Acacia cupularis* +/- *Pimelea serpyllifolia* spp *serpyllifolia* +/- *Dianella brevicaulis* Low Coastal Shrubland
- Acacia dodonaeifolia* Tall Open Shrubland with emergent *Allocasuarina verticillata*
- Acacia longifolia* spp *sophorae* Coastal Shrubland
- Allocasuarina verticillata* Low Woodland
- Hakea mitchellii* +/- *Acacia dodonaeifolia* Shrubland
- Lawrencia* spp Low Open Shrubland
- Leucophyta brownii* +/- *Acacia longifolia* ssp. *sophorae* Low Shrubland
- Leucopogon parviflorus* +/- *Cleaira axillaris* +/- *Acacia sophorae* Shrubland
- Lomandra effusa* +/- *Lepidosperma* spp +/- *Gahnia* spp +/- *Imperata cylindrica* Sedgeland
- Melaleuca halmaturum* Low Woodland
- Cleaira axillaris* +/- *Acacia cupularis* Very Open Shrubland
- Cleaira axillaris* +/- *Acacia longifolia* ssp *sophorae* +/- *Leucopogon parviflorus* Low Coastal Shrubland
- Ozothamnus turbinatus* Shrubland
- Sarcocornia* spp +/- *Halosarcia* spp Low Shrubland
- Spinifex hirsutus* +/- *Euphorbia paralas* +/- *Thinopyrum junceiforme* Grasslands

Author: Sheila Egan  
Date: 14/03/8 Dec 2014  
Coord System: GDA 1984 MGA Zone 54  
Disclaimer:  
The Coolwa to Wellington Local Action Planning Association Inc and its employees do not warrant or make any representation regarding the use, or results of the use, of the information contained herein as regards to its completeness, accuracy, reliability, currency or otherwise. The Coolwa to Wellington Local Action Planning Association Inc and its employees expressly disclaim all liability or responsibility to any person using the information or advice contained in this document.  
© Coolwa to Wellington LAP  
This work is copyright. Unless permitted under the Copyright Act 1968 (Cwth), no part may be reproduced by any process without prior written permission from The Coolwa to Wellington Local Action Planning Association Inc. Requests and inquiries concerning reproduction and rights should be addressed to the Coolwa to Wellington LAP Association Program Manager, PO Box 674, Strathalbyn, S.A., 5205.  
Data and imagery used with permission from the Department of Environment, Water and Natural Resources

Fig 4.1 Vegetation communities of Tokuremoar Reserve and adjoining coastal areas (Simon and Bain 2015).

## Nearshore Habitats

This cell forms part of the Encounter Marine Park. The marine areas of cell F4 are within a Habitat Protection Zone (HPZ-7) and make up part of the nursery grounds for the endangered Southern Right Whale and is part of the designated Encounter Bay Whale Nursery Protection Area from the Murray Mouth to The Bluff, Victor Harbor (see Figure 4.2).

Bryars (2013) describes this cell as composed entirely of soft bottom habitats/ bare sand (including the beach) to 4km offshore (see Figure 4.2).

No mapped areas of seagrass or reef occur within this cell. The inshore soft bottom habitats/ bare sand is characterised by a high energy beach system with a 500 m wide dissipative surf zone and fine sand (Short 2001).



*Western Australian Salmon (Aripis truttaceus) occur seasonally along the Fleurieu Peninsula, where they form fast-moving schools in nearshore waters and patrol surf zones, rocky headlands, and sandy beaches. Known for their strong coastal migrations, they are a prominent predatory species in the region, feeding on small pelagic fishes and playing an important role in local marine food webs.*

No recognised estuaries occur in this cell.

Haig et al. (2006) undertook video surveys and made limited specimen collections from grab samples in the region. Bryars (2003) listed ten fish and three macroinvertebrate fisheries taxa for the surf beach habitat between Middleton Beach and Goolwa Beach. However, no habitat condition or systematic biological surveys appear to have been undertaken on the habitat within this cell.

The SA Coast Protection Board's Beach Profile Survey Program was first established in 1977 along the Fleurieu Peninsula to monitor and evaluate changes in beach and seabed level, with a network of over 600 profiles maintained across the state. Profiles are usually established perpendicular to the shoreline and may extend 1 to 10 km offshore. Erosion hotspots are monitored annually to identify risks to natural assets and infrastructure. Profiles are also used to monitor a range of coastal ecosystems and landforms including saltmarsh and mangroves, seagrass, sand dunes and cliff profiles and provide a rare, long-term dataset which informs evidence-based decision making and coastal adaptation planning. The program utilises a range of terrestrial and hydrographic survey techniques involving high precision GPS equipment and at some locations, topographic and photogrammetry drone survey is undertaken, which uses overlapping photos to create 2D and 3D digital surface model to map detailed changes to the coastal landforms over time.

A beach profile was established in 2023 within the central area of the dune system within the Tokuremoar Reserve in partnership with the Hills and Fleurieu Landscape Board and Green Adelaide to monitor the control of environmental weed, Sea Wheat Grass (*Thinopyrum junceiform*) and to monitor beach-dune and nearshore dynamics

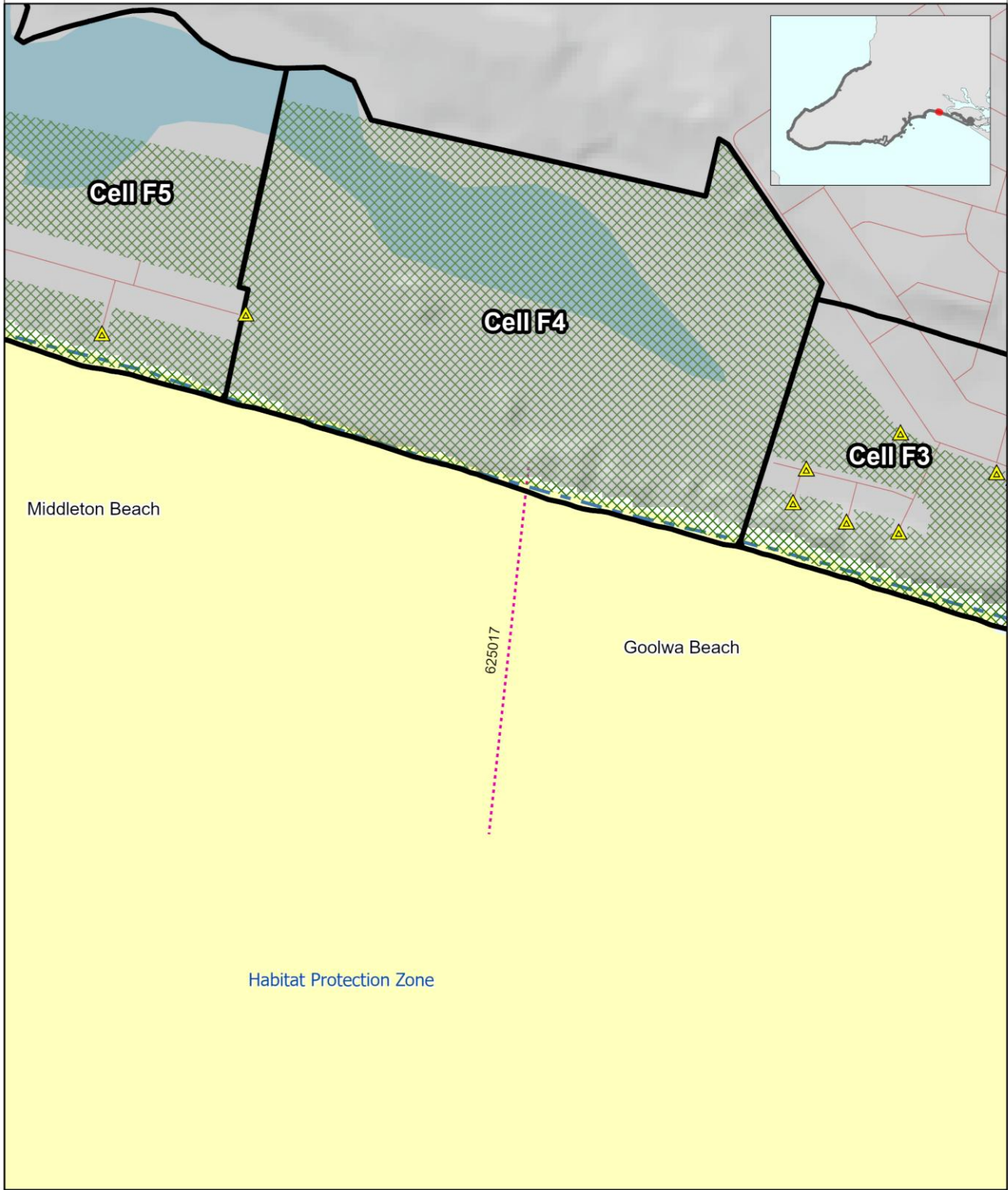
over time. *T. juncifera* invaded the region in the late 1980's and as impacted on dune morphology, building the foredune upwards and seaward of the high water mark, creating a steep, uniform and densely vegetated dune face.

A topographic and photogrammetry survey of the foredunes was captured by Coast Unit DEW in November 2025 after the cumulative impacts of three significant storm events that impacted statewide on the SA coastline. This survey will enable a detailed baseline 2D and 3D surface model to monitor recovery of the dunes post storm and monitor future dune recession and storm surge incursions into the dunes as well as long term changes to climate change induced changes including sea level rise.



*Indo-Pacific Bottlenose Dolphins (Tursiops aduncus) are regularly observed along the Fleurieu Peninsula, where they inhabit coastal waters, bays, and nearshore reefs. They occur in small, socially cohesive groups and are known for their complex behaviour, including cooperative foraging and frequent interactions with local fish assemblages. (M Stokes)*

# Nearshore Habitats: Cell F4



Unconsolidated Bare Substrate	Wetland	 
Unmapped	Stormwater Discharge	
Coastal Conservation Cell	Watercourse	<b>Produced by</b> Landscapes Hills and Fleurieu <b>Date</b> Date Saved: 11/11/2025 11:35 AM <b>Projection</b> GDA 2020 South Australia  <small>© Crown in right of the State of South Australia, Hills and Fleurieu Landscape Board. The HFLB does not guarantee that this map is error free. Use of the map is at the user's sole risk and the information contained on the map may be subject to change without notice.</small>
Marine Park Zones	Roads	
Coastal Reserves / NPWS Parks		

L:\WP\50811\Working\Projects\Nature\SCAP\_2025\SCAP\_2025\_HFLB\Map.aprx

Figure 4.2 Nearshore habitats of Cell F4

## Threats

### Whole cell

Increased visitation and permanent population growth exacerbate pressure upon natural environments (e.g. increased formal and informal access, dogs on beaches, drone use, cockle harvesting, litter etc.). Foot damage to the dunes, shown by multiple tracks, increases dune instability and weed distribution.

Significant funding and resourcing from Second Nature Conservancy (formerly GWLAP), Goolwa Coastcare Group, Alexandrina Council and Landscapes boards has been invested in revegetation, weed control, and restricted access to the high conservation value areas to manage threats, reduce erosion and enhance biodiversity. It is important that weed control efforts are maintained, and new incursions are monitored and controlled, including along the Encounter Bikeway path.

The Goolwa Dunes & Tokuremoar Reserve Environmental Action Plan includes weed mapping, directing control efforts for high priority weeds. Conservation analysis for this cell is remarkable, considering its location and the threats imposed by rapidly rising population in adjacent areas (Caton et al 2007). Numbers of exotic species and rated weeds are comparatively high compared with other cells. The adjacent Goolwa Waste and Recycling Depot, and some dune instability add to threats in this cell.

The following declared or red alert weeds have been found in this cell: Bridal Creeper (*Asparagus asparagoides*), Pyp Grass (*Ehrharta villosa*), African Boxthorn (*Lycium ferocissimum*), Coastal Wattle (*Acacia cyclops*), False Caper (*Euphorbia terracina*), Golden Wreath Wattle (*Acacia saligna*), Sea Spurge (*Euphorbia paralias*), Olives (*Olea europaea* ssp. *europaea*), Hottentot Fig (*Carpobrotus edulis*), Horehound (*Marrubium vulgare*), Giant Reed (*Arundo donax*), New Zealand Mirror-bush (*Coprosma repens*), Salvation Jane (*Echium plantagineum*), Gazania (*Gazania linearis*), Coast Tea-tree (*Gaudium laevigatum*), Aleppo Pine (*Pinus halepensis*), Blowfly Bush (*Rhamnus alaternus*), Radiata Pine (*Pinus radiata*), Boneseed (*Chrysanthemoides monilifera* ssp. *monilifera*), Myrtle-Leaf Milkwort (*Polygala myrtifolia*), Cape Ivy (*Senecio angulatus*), Pincushion (*Sixalix atropurpurea*), Caltrop (*Tribulus terrestris*), Century Plant (*Agave americana*), Marram Grass (*Ammophila arenaria*), Cape Weed (*Arctotheca calendula*), Onion Weed (*Asphodelus fistulosus*), Kikuyu (*Cenchrus clandestinus*), Perennial Veldt Grass (*Ehrharta calycina*), Freesia (*Freesia leichtlinii*), Evening-flower Gladiolus (*Gladiolus tristis*), Broad-leaf Cotton-bush (*Gomphocarpus cancellatus*), Dwarf Sea-lavender (*Limonium binervosum*), Tree Mallow (*Malva arborea*), Common Iceplant (*Mesembryanthemum crystallinum*), Buffalo Grass (*Stenotaphrum secundatum*), Aster-weed (*Symphotrichum subulatum*), Sea Wheat-grass (*Thinopyrum junceiforme*) and Apple of Sodom (*Solanum linnaeanum*).



Coast Tea-tree (*Gaudium laevigatum*) is a fast growing and spreading weed within coastal areas particularly dunes. previously a common garden plant and now regarded as an environmental weed (B Simon)

Garden escapes, including Gazania (*Gazania linearis*), Common Freesia (*Freesia spp.*), Rose Geranium (*Pelargonium x asperum*), South African Weed Orchid (*Disa bracteata*), Coast Tea-tree (*Gaudium laevigatum*), Perennial Veldt Grass (*Ehrharta calycina*) and [Cape Tulip \(\*Moraea spp.\*\)](#) from local residences threaten high conservation coastal dunes by degrading condition and habitat values.

Illegal rubbish dumping and unauthorised camping within the dunes and particularly within the Tea Tree areas threaten biodiversity values in this cell. Introduced weeds, vegetation damage, trampling and removal of plants from human activity is also a threat. Compliance challenges exist. Inappropriate social activity occurs in the reserve, including hiding, hunting, camping, vegetation clearance, damage from bikes and play in vegetation, and fire. There is also wildfire risk.

Several butterfly and skipper species that have localised populations are limited in capacity for dispersal and/or colonisation of new sites. The lack of suitable habitats, weed invasion and interconnectivity between habitats prohibits movements and, therefore, creates localised isolation of populations. Urbanisation of coastal areas reduces the efficiency of species movements that could otherwise occur. Several species are now restricted to pockets of isolated habitats, resulting in some being vulnerable to population collapse (Stolarski 2024).

Off-leash dogs are permitted on this beach, which may deter Hooded Plover and other beach nesting birds through frequent use and disturbance. Vehicle patrols on beaches by SLSC volunteers on beach with quad bikes/vehicles can increase disturbance to birds. Foxes, sea level rise, storm surge, dogs off leash, Pyp (*Ehrharta villosa*) and Sea Wheat-grass (*Thinopyrum junceiforme*) are impacting beach nesting birds in this cell.

Sea Wheat-grass is well established in the Goolwa and Peninsula foredunes and has altered dune geomorphology, creating a wall of taller dunes that impacts beach nesting bird and potential Hooded Plover habitat. Due to the growth habits of introduced grasses, dunes on which they are established develop steeper and higher dune heights than those dominated with local native spinifex plants. Hooded Plovers need a relatively open beach/foredune area to be able to breed, roost and feed. Dunes with high and densely planted areas are not favourable to Hooded Plovers and put them at greater risk to predators such as silver gulls, ravens, foxes and other species.



Dune erosion and scarping following high tides and storm surge. These dunes are dominated by Sea Wheat-grass and erode in steep cliff edges and take considerably longer to recover and rebuild than native Spinifex dominated dunes (C Jackson)

Potential pest animal threats exist to coastal fauna and flora from rabbits (*Oryctolagus cuniculus*), foxes (*Vulpes vulpes*), and cats (*Felis catus*). Coordinated collaboration between landowners and managers is required to manage pest animals (refer to Regional Pest Management Strategies).

A sighting of the declared pest Common Myna (*Acridotheres tristis*) in Encounter Bay (on the coastal slopes adjacent to cell F12) was reported in 2024, and this is the only known location of the bird in South Australia. This aggressive invasive species, also known as the Indian Myna, is established throughout eastern Australia and poses a threat by evicting native birds from their nests, destroying eggs, and killing chicks. They also damage crops and orchards and are a nuisance for residents. A pest alert remains in place for any sightings to be reported via MynaScan to aid eradication efforts.

Diseases, such as Avian cholera, are a threat to waterbirds in the cell (sea bird, shorebirds, waterfowl, penguin). Zoonotic threats to marine wildlife from humans. Refer to National Wildlife health and biosecurity plans (Wildlife Health Australia 2018 and 2022).

Recreational cockle harvesting and vehicles on beaches can impact shorebird feeding and habitats through sediment compaction, reduced beach wrack, and food sources for beach nesting birds and migratory shore birds. Commercial and recreational cockle harvesting for human consumption has increased since the 1990s (Durante 2022) and could impact feeding and habitats through reduced food sources for beach nesting birds and migratory shore birds. Maintain and improve recreational fishing and beach access information for the general public and targeted community groups.

The bulk of this cell is outside of the Conservation Zone of the Planning and Design Code and is in rural zoned land. Likewise, the Coastal Areas Overlay only applies to a small portion of this cell, and hence this small section is the only section that is subject to the Coastal Areas Overlay provisions or the protections given swamp and sand dune areas in many other coastal areas. Revision of the spatial application of the Conservation zone and the Coastal Areas Overlay to include the entire cell should be undertaken to resolve the lack of suitable policy.

Tokuremoar, and the adjacent low-lying land immediately to the west, are subject to land based flooding. However, flooding regimes are dependent on land and water management within the catchment, which is based on agricultural needs and wetland management. Locally, there is potential for groundwater contamination from the adjacent dump, now waste transfer station (WTS), which is immediately upslope on a pervious limestone slope (Caton et al 2007). The WTS also remains a fire hazard to Tokuremoar Reserve. There is currently no monitoring of flooding, groundwater levels and groundwater quality, although the values of this rare area depend upon its hydrology.

According to Bryars (2013), no significant threats were identified for nearshore marine habitats. However, following heavy rains in the winter of 2012 the Tokuremoar Reserve flooded and, in an attempt to prevent damage to nearby houses, the water was pumped over the dunes onto the beach. This action caused localised sand scour and erosion on the beach. Such activities should be discouraged, and appropriate stormwater management planning undertaken.

Outflow from the River Murray has also been significant in recent times, with associated turbid waters extending westward from the Murray Mouth across Encounter Bay to The Bluff and possibly further. The impacts of these episodic flows on nearshore habitats are unknown and the River Murray was not included in the formal threat analysis.

## Opportunities

### Whole Cell

Manage visitor numbers and impacts to ensure coastal areas can support growing demand, while maintaining and improving the quality of experiences without diminishing the values of the cell. Investigate informal camping issues, improve infrastructure and fencing to ensure for environmentally sensitive path formalisation and low-impact walking trails, and further opportunities to reduce impacts on the coastal environment. Education, restrictions and compliance regarding off leash dogs and informal camping. Work with First Nation communities, tourism operators and agencies to support visitor education about coastal ecological and cultural values and appropriate behaviors.

Community education opportunities regarding:

- Migratory and residential shorebirds and sea birds (dogs on leads, nesting sites, citizen science projects, managing visitor disturbance) and interpretive signage at high use areas.
- Fragile nature of coastal areas that are sensitive to foot traffic, soil compaction and erosion.
- Education and targeted communications regarding Marine Parks, nearshore habitats.
- Increased cultural awareness training and knowledge of culturally appropriate processes to respect known cultural heritage sites for land managers and coastal community groups
- Citizen science monitoring to contribute to intertidal reef monitoring, Seagrass restoration, dolphin watch, beach pole monitoring, Fleurieu seabird monitoring program and beach nesting birds.
- Coastal gardens and resident/business owner education.
- Value of place and coastal values, responsible beach use and reducing human impact on dunes.
- There is an opportunity for signage renewal across coastal areas to educate the community about coastal conservation, cultural significance and appropriate behaviours.

Explore opportunities with local commercial fisheries (marine algae, scalefish fisheries, Pipi) to collaborate and raise awareness of supporting valuable habitats, species of conservation concern and monitoring. Explore opportunities to review fisheries management plans across the Murray Mouth, Lakes, and Coorong regions to help strengthen wild catch monitoring efforts for coastal fauna species and potential pressures on conservation listed species.

Public ownership of this rare coastal swamp gives the opportunity for government/community partnerships to actively manage the area. Through this partnership approach, the reserve has had extensive weed control and revegetation works undertaken in recent years, with a significant change in many areas protecting remnant vegetation and reducing weed distribution and threat across the site. Ongoing control and investment are critical to addressing high priority weeds and maintaining conservation values for the cell. Coordination with coastal community groups and land managers is required to leverage further investment, and support implementation of the Goolwa Dunes & Tokuremoar Reserve Environmental Action Plan.

There is on-going collaborative management of private Heritage Agreements and public land areas that has been occurring between the private owners, Second Nature Conservancy, Native Vegetation Council and Goolwa Coastcare Group for many years. Continued funding support, especially to continue to resource and matching funding/in-kind arrangement in place involving the landowner and bushcare contractor are needed to support this partnership approach. There may be an opportunity for developing Memoranda of Understanding between landowners for conservation management or progressing a formal conservation status for high value public coastal habitat in this cell.

Opportunity exists to review the Goolwa Dunes & Tokuremoar Reserve Environmental Action Plan, (Simon and Bain 2015) including a detailed fauna survey, and undertake ongoing habitat condition monitoring to support implementation of the plan. Maintain and expand coastal restoration actions, including revegetation with local native plants and priority weed control.

Weed management is a key priority to help retain the biodiversity values of the cell. Declared and red alert weeds are a high priority for control, as they actively invade intact native vegetation and displace or choke out native plant species. Undertake high priority weed control to maintain conservation values of the dune system.

Targeted interventions for threatened/rare plant species and communities, including weed control, and reintroductions and translocations of rare plants. Engagement and collaboration with private landowners of high value remnant vegetation communities, and opportunities for increased protection from weed incursion and potential future development.



*Austral Trefoil (Lotus australis) is locally uncommon within southern Fleurieu dunes and should be actively returned through restoration and revegetation programs (L Kirwan)*



*Thatching Grass (Gahnia filum) sedgeland is valuable habitat for Yellowish Sedge Skipper (Hesperilla flavescens), improvement in this cell would allow for reintroductions to this site (C Jackson)*

Increase suitable habitat for coastal butterfly populations through planting of host plants (including Thatching Grass (*Gahnia filum*), Coast Bitter-bush (*Adriana quadripartita*) and *Poa spp.*), which would enhance habitat suitability for local introductions. The Bitter-bush Blue (*Theclinessthes albocinctus*) butterfly will naturally establish in Tokuremoar Reserve, provided Coast Bitter-bush (*Adriana quadripartita*) additional habitat enhancement is undertaken, through plantings in suitable soils (Stolarski 2024).



*Yellowish Sedge Skipper (Hesperilla flavescens) on Thatching Grass (Gahnia filum) (M Endacott)*

The enhancement of existing and creation of new habitats for potential reintroduction of Yellowish Sedge Skipper (*Hesperilla flavescens*) have been undertaken at Tokuremoar Reserve. Additional habitat enhancement works are recommended for suitable areas of the Reserve to increase area of host plant Thatching Grass (*Gahnia filum*) and promote new growth in existing plants. Investigate opportunities for an ecological burn opportunity within Tokuremoar, for renewal of butterfly habitats (Thatching Grass (*Gahnia filum*)) and potential reduction of fuel loads and species renewal.

Hooded Plovers have established breeding sites within this cell and represent the easternmost distribution of the local population. Improved knowledge and management of beach nesting birds can support policy around beach visitation and conservation. Actions to support Hooded Plovers, Red-capped Plover and Oystercatcher conservation include management of 4WD use on beach (reduction in vehicle numbers, closure or exclusion zones), and education for beach users and dog owners.

This cell is important for coastal raptors, and ongoing monitoring and management is critical to minimise visitor disturbance and to support habitat condition for raptor populations. Investigate opportunities to support and implement the recovery plan for Eastern Osprey and White-bellied Sea eagles (2022). Monitor, maintain and improve the quality of vegetation for the provision of wildlife habitat for priority species.

As part of the *Coastal Dune and Clifftop Vegetation Surveys* (1995–1997) (Opperman 1999), long-term monitoring sites were established across South Australia and the Southern Fleurieu region to assess the structure and composition of coastal dune and clifftop plant communities, and their relationships to regional and environmental factors. Given that nearly 30 years have passed since these surveys were undertaken, there is strong potential for shifts in geographical range and changes in species composition due to the long-term impacts of climate change. The *Survey of Remnant Vegetation of the Southern Fleurieu Peninsula* involved biological surveys conducted between 1987 and 1991 to establish baseline data on remnant vegetation and swamps in the region south of Adelaide, South Australia.

During the development of this plan, and through the assessment of flora and fauna (both native and introduced) species lists available via the Biological Database of South Australia (BDBSA), significant gaps were identified between recorded species and known species distributions within cells. To address these data deficiencies and improve the accuracy of long-term ecological records, both above foundational vegetation survey projects should be repeated and incorporated into an ongoing monitoring program. Fauna assessments across cells to establish population baselines, update existing records and species distribution, particularly of underrepresented groups (reptiles and invertebrates) should be undertaken.



*Painted Dragon (Ctenophorus pictus) are found within the Tokuremoar Reserve and adjoining dunes and well camouflaged against the sand (B Simon)*

There are opportunities for collaboration between partners, such as National Parks, Marine Parks, First Nations, landscape boards, volunteer groups, community and nature-based tourism operators, for monitoring of sea bird, coastal raptors, marine mammals and other wildlife.

Supporting community volunteer, First Nations and private landowner efforts to undertake priority restoration and conservation work in this cell. Strengthening partnerships with adjoining landowners, volunteer organisations, researchers, and the wider community to foster collaboration and long-term management benefits for biodiversity protection and restoration.

An opportunity also exists to work with nature-based tourism operators to increase education and stewardship of local coastal environments. Investigate opportunities for coastal wildlife management (shorebirds, seabirds and marine mammals) to be included in permitting for major community events and nature-based tourism operations.

There is an opportunity for forward planning of stormwater management and infrastructure to allow for environmental flows and vegetation connectivity, while supporting flood protection. Investigate improved stormwater and flood mitigation strategies, while maintaining the integrity of the dune system through water sensitive urban design (WSUD). Support initiatives to collect and reuse stormwater (e.g. Alexandrina Council's Stormwater Detention and Retention Standards). Undertake development of stormwater management plan for Goolwa and surrounding coastal areas and consider a wetland system at the rear of the dunes (cell F3) providing connectivity with areas east of Beach Road (natural flows).

Determine the Pipi wildcatch requirement for shorebirds and continue monitoring of commercial and recreational fishing areas to ensure bag limits maintain adequate food supplies for wild populations.

Collaborate with the SA Climate Ready Coasts program to enhance, resource, and implement coastal management initiatives and accelerate coastal hazard adaptation planning across South Australia. This program supports the development and delivery of Coastal Hazard Adaptation Plans (CHAPs), led by the Local Government Association (LGA) of South Australia in partnership with the SA Coast Protection Board, the Department for Environment and Water, the Adelaide Coastal Councils Network, and the SA Coastal Councils Alliance.

### **Nearshore Habitats**

Bryars (2013) recommends biological surveys of the soft bottom habitats/ bare sand habitat are required to better understand habitat values and to compile meaningful species lists for the cell. For example, Rowling et al. (2010) documented 21 epifauna species from a series of benthic beam trawls on sandy habitat offshore from the surf beach adjacent to the south lagoon of The Coorong.

## **Climate change threats to coastal biodiversity (see BMT 2025)**

### **Potential Climate Change Threats**

Biodiversity Assets potentially vulnerable to climate change in this cell include:

- Coastal dunes
- Bird nesting habitats
- Native vegetation

These ecosystems may be particularly vulnerable to the direct impacts of climate change, particularly sea level rise, coastal erosion, increased drought, higher temperatures and more intense storms as described above.

Over time increasing aridity will slow natural recovery from damage to dune vegetation and compounds the pressure of lack of floodwaters on the *Melaleuca halmaturorum* paperbark swamp. Rising sea levels will see increased storm damage to foredunes; Bruun Rule calculations of beach recession could be compromised by active littoral drift values here. However, recession of the order 10 – 20m over 50 years is likely, given current IPCC forecasts. Probable increases in the low period swell component of wave climate and a projected increase in the magnitude of peak storm events, increase the uncertainty in seasonal changes of beach state (Caton et al 2007).

The dunes in this location are relatively low (at around 6-8m) and range in width landward between 40m and 80m. The land behind the dunes is at low elevation (around 2m) and forms part of the *Melaleuca halmaturorum* paperbark swamp. With the existing predictions of coastline recession at 70 to 100m, it is obvious that the narrow sections of dune are at high risk of erosion and marine transgression. Sea water inundation and potential flow around and behind remaining dunes through low lying land presents a risk and may accelerate the rate of erosion. Without intervention, the dune system would recede and likely break down on the western end (adjacent subdivision) and sea water would flow behind the settlement. If this were to occur, the ecology of the reserve would change irreversibly (Western et al. 2019).

## Cell Action Table

Component	Issue	Proposed action	Priority	Key players
Whole cell	Threats and opportunities to improve protection of cultural heritage within cell	Cultural consultation and collaboration to appropriately manage cultural heritage within this area.  Prevent damage, disturbance, or interference to cultural heritage by adhering to the Aboriginal Heritage Act 1988.	High (cons/ threat)	NAC, Council, LHF, Coastal Community groups, Aboriginal Affairs and Reconciliation - Department of Premier and Cabinet
	Coordinated active management required of reserve with high conservation and Aboriginal heritage value, which is facing increased population pressure from adjacent areas.	Review by DEW Land Administration Branch, Coast Protection and NPWS, in light of conservation values and increasing threats.	High (Cons / threat)	DEW, NPWS, NAC, Aboriginal Affairs and Reconciliation - Department of Premier and Cabinet.
		Continue to support opportunities to collaborate with private land managers with similar vegetation associations and heritage agreements to increase connectivity across local landscape.	High (cons)	Council, NPWSSA, land managers, Second nature Conservancy, LHF, NAC, coastal community groups
	Increased permanent population, visitation and recreational pressure on dunes and viewing points due to increased local population and tourist promotion.	Assess increased visitation capacity at known sites, repair or upgrade fencing to restrict unauthorised access and review car parking capacity. Manage visitor impacts within sustainable limits in ecologically and culturally sensitive and significant areas - consult with First Nations groups.	High (cons/ threat)	Council, NPWSSA, NAC, land managers, Second Nature Conservancy
		Investigate opportunities for community education and engagement regarding unique and valuable coastal landscape and fragile nature of coastal areas. Dedicated cultural education and training for land managers, agency staff and land stewards	High (Cons/ Soc)	DEW, NPWSSA, SA Water, Council, LHF, NAC, Second Nature Conservancy, Community groups
		Development of consistent signage and messaging for coastal values and compliance for conservation areas (public managed lands, coastal reserves) across the Fleurieu Peninsula coast. Co-design signage with First Nations/ knowledge holders.	Medium (Soc/ Cons)	Council, land managers, Second Nature Conservancy, NAC, NPWSSA, coastal community groups
		Opportunity to work with nature-based tourism operators to enhance education and stewardship of local coastal environments, including opportunities to partner with First Nations groups who hold cultural obligations and authority to Sea Country	Medium (Cons)	Council, land managers, NAC, NPWSSA, coastal community groups
		Events on beaches and coastal habitats must not impact on natural values, especially listed threatened species and communities, in the area or vicinity of events. Event organisers should be informed, where appropriate via permits, on their obligations to not inflict environmental harm and to undertake actions in accordance with relevant legislation and by-laws.	Medium (threat)	Council, DEW, NPWSSA, BirdLife Australia, event managers
		Collaborate and manage access with beach-based users and businesses (e.g. SLSC, Surfing SA, surf/paddle boarders, swim/surf schools), to ensure protection of coastal areas and groups do not impact conservation and cultural value areas and species.	Medium (threat)	Council, DEW, land managers, NAC, coastal community groups, beach users and businesses
		Increase in illegal camping.	Monitor reserves and undertake compliance where required. Seek resourcing to support implementation.	High (threat)
	Increase public awareness of legal camping areas and responsible use. Support areas set aside for free camping and correct information. Seek resourcing and build partnerships to support implementation.		Medium (threat)	NPWSSA, Council, tourism bodies, Crown Lands, DEW

Component	Issue	Proposed action	Priority	Key players
Whole cell	Planning and Design Code zoning does not fully recognise conservation zone and protection of coastal habitats.	The spatial application of the Conservation Zone in the Planning and Design Code does not reflect the areas that should be zoned Conservation.	Medium (threat)	DEW, CPB, Plan SA, Council, Crown lands, Department for Housing and Urban Development (DHUD)
	The spatial application of the Coastal Areas Overlay does not adequately cover areas that should be subject to the Coastal Areas Overlay policy	The Coastal Areas Overlay policy should be reviewed and strengthened to ensure any development of areas where it applies adequately consider coastal processes including retreat	Medium (threat)	CPB, Plan SA, Council.
	Threat to coastal fauna and flora from pest animals (rabbits, foxes and cats).	Coordinated collaboration between landowners and managers is required to manage pest animals.	High (threat)	Councils, land owners, NAC business/contractors/rangers, LHF
		Report sightings of feral animals (deer, fox, rabbit, cat and declared species) through the feral scan pest animal recording and management tool	High (threat)	Land managers, community, coastal community groups
	Butterfly habitats and host plant protection.	Identify locations of potential butterfly habitats and host plants within the cell.	High (cons)	DEW, NPWSSA, LHF, coastal community groups
		Extension of existing habitats and reintroduction of locally extinct butterfly species.	Medium (cons)	DEW, NPWSSA, LHF, NAC business/contractors/rangers, coastal community groups
		Continue planting <i>Gahnia filum</i> to enhance habitat for the introduction of <i>Hesperilla flavescens</i> . Weed management in <i>G. filum</i> plantings. <i>A. quadripartita</i> plantings for <i>Theclinesthes albocinctus</i> .	Medium (cons)	NPWSSA, LHF, coastal community groups, Council, Second Nature Conservancy
		Valuable habitat for <i>Hesperilla donyssa donyssa</i> , <i>Anisynta cynone cynone</i> , <i>Theclinesthes albocinctus</i> & common species at Old Goolwa Golf Course & Heritage agreement Areas. Monitor existing species populations. Remove invasive weed species where possible.	Medium (cons)	Private, Second Nature Conservancy, LHF
		Retain and seed where possible mistletoe species ( <i>Amyema spp.</i> ) to support <i>Amaryllis Azure (Ogyris amaryllis meridionalis)</i> butterfly populations	Medium (cons)	NPWSSA, LHF, Coastal community groups, Council
	Valuable habitat for coastal raptors (White-bellied Sea eagle and Eastern Osprey).	Ongoing monitoring and management of high values nesting and foraging areas.	High (cons)	NPWSSA, DEW, LHF, Council, NAC business/contractors/rangers.
		Implement the recovery plan for Eastern Osprey and White-bellied Sea Eagles (2022).	High (cons)	DEW, NPWSSA, LHF
	Potential for fire risk and opportunity for habitat restoration.	Opportunity for ecological burn to restore butterfly habitats and improve renewal of fire-dependent ecosystems.	Medium	DEW, NPWSSA, NAC, Council, LHF, coastal community groups
	The reserve is of high conservation value but is under growing population and weed pressure.	Implementation of Goolwa Dunes & Tokuremoar Reserve Environmental Action Plan through targeted control of weed species.	High (Cons / threat)	Council, LHF, NAC business/contractors/rangers, land managers, coastal community groups, Second Nature Conservancy
		Review and updating of the Goolwa Dunes & Tokuremoar Reserve Environmental Action Plan to continue support of cultural heritage values and extensive weed control implementation and restoration activities.	High (Cons / threat)	DEW, LHF, NAC, Second Nature Conservancy, Council, coastal community groups
		Ongoing control and investment in weed control (particularly WONS and Red Alert Species) to protect and maintain high conservation areas, including in difficult to access areas.	High (threat)	NPWSSA, land managers, Council, coastal community groups, LHF, NAC business/contractors/rangers, Second Nature Conservancy
		Pursue educational opportunities to reduce incidences of the use of invasive garden species.	Medium (threat)	Council, coastal community groups, LHF, NPWSSA, Second Nature Conservancy

Component	Issue	Proposed action	Priority	Key players
Whole cell	The reserve is of high conservation value but is under growing population and weed pressure.	Leverage funding opportunities based on previous investment and in-kind contributions from coastal community groups.	Medium (cons)	NPWSSA, Second Nature Conservancy, LHF, coastal community groups and Council
		Monitor changes to dunes through BushRAT or similar monitoring to measure condition assessment and change.	High (cons/threat)	NPWSSA, Second Nature Conservancy, Council, LHF, Community Groups.
	Protection of significant flora and fauna.	Protect existing populations through targeted weed control and restoration of habitats with local coastal species.	High (Cons/threat)	Council, NPWSSA, land managers, LHF, NAC business/contractors/rangers, coastal community groups,
		Propagate local plants for reintroduction to other sites to maintain genetic diversity and increase source populations.	High (cons)	Council, NPWSSA, land managers, LHF, NAC business/contractors/rangers, coastal community groups, Local coastal plant nurseries, Second Nature Conservancy
		Targeted interventions for threatened/rare plant species and communities.	High (cons)	DEW, NPWSSA, LHF, Council, coastal community groups, Second Nature Conservancy
		Explore opportunities for greater local awareness of conservation value of area.	Medium (cons)	Council, NPWSSA, LHF, coastal community groups, Second Nature Conservancy
		Coordinated approach to monitoring of coastal wildlife.	Collaboration between land manager and stakeholders to support research and citizen science of beach-nesting birds, seabirds, coastal raptors, marine mammals and other wildlife.	Medium (Cons)
	Aged baseline data and significant gaps in recorded flora and fauna species across the Southern Fleurieu region.	Repeat and integrate historical vegetation surveys into a long-term monitoring program to update records and address data deficiencies.	Medium (cons/threat)	DEW, LHF, councils, coastal community groups
		Undertake fauna assessments across cells to establish baselines, update records and species distribution, particularly of underrepresented groups (reptiles and invertebrates).	Medium (cons/threat)	DEW, LHF, councils, coastal community groups
		Identify potential funding sources to repeat these long-term flora monitoring sites and fauna assessments.	High (cons/threat)	DEW, LHF, councils.
	Diseases, such as Avian cholera, are a threat to waterbirds in the cell (sea bird, water fowl, penguin). Zoonotic threats to marine wildlife from humans (and vice versa).	Implement actions in National Wildlife Health and biosecurity plans to minimise risk of infection and spread.	High (threat)	DEW, NPWSSA, LHF, PIRSA, Council
	Multiple community groups and volunteers across coastal areas.	Acknowledge significant value, contribution and knowledge of coastal community groups. Facilitate opportunities for increased coordination and sharing of skills and information between community groups and volunteers to support landscape-scale approach to coastal conservation and management.	High (cons)	Council, land managers, LHF, NAC business/contractors/rangers, coastal community groups, Second Nature Conservancy
Swamp Paperbark ( <i>Melaleuca halmaturorum</i> ) Woodland	Pressures on groundwater and flooding regime.	Review opportunities to establish a monitoring regime of flooding regime, groundwater levels and groundwater quality.	Medium (threat)	DEW, NPWSSA, LHF, Coastal Community groups
Swamp Paperbark ( <i>Melaleuca</i> )	Stormwater management issues and flood mitigation.	Seasonal pooling of water behind dunes prevented from natural flow due to Beach Road. Consider installation of	Medium (cons)	Council, NAC business/contractors/rangers,

Component	Issue	Proposed action	Priority	Key players
<i>halmaturorum</i> ) Woodland		culvert to re-establish flow across isolated patches of high conservation areas.		
		Undertake development of stormwater management plan for Goolwa including coastal areas.	High (threat)	Council, LHF, Stormwater Management Authority
		Support initiatives to collect and reuse stormwater (e.g. Alexandrina Council's Stormwater Detention and Retention Standards)	High (cons)	Council
	Environmental flows and inundation periods for health of wetland system.	Investigate opportunities for infrastructure and WSUD to allow for longer periods of inundation, while supporting flood protection.	High (cons)	Council, NPWSSA, LHF
Beach	Increased recreational cockle harvesting can impact shorebirds and beach nesting birds	Increase community awareness of impacts to beach-nesting and shorebirds through recreational fishing	Medium (cons)	PIRSA, Council, NPWSSA
		Determine wildcatch requirements of pipis for dependent wildlife populations.	High (cons)	PIRSA, DEW, NAC business/contractors/rangers
		Monitoring of pipi population in recreational and commercial areas to ensure adequate supply for wildcatch-dependent populations.	High (cons)	PIRSA, DEW, NAC business/contractors/rangers
Beach-nesting birds	Hooded Plover, Red-capped Plover nests and breeding areas threatened by disturbance by walkers, horses and dogs.	Community monitoring, fences to mark nests. Signage and awareness raising activities to alert dog walkers.	High (Cons / threat)	Council, BirdLife Australia, LHF, NAC business/contractors/rangers, Friends of the Hooded Plover, Fleurieu Peninsula volunteers, coastal community groups, Oystercatcher monitoring volunteers
	Limited community knowledge of local conservation values and threats.	Provide education opportunities to raise awareness and protection of beach-nesting birds, such as Hooded Plovers and Sooty Oystercatchers (dogs on leads, nesting sites, citizen science projects, managing visitor and SLSC vehicle patrol disturbance).	High (cons)	Council, BirdLife Australia, LHF, NAC business/contractors/rangers, Friends of the Hooded Plover, Fleurieu Peninsula volunteers, coastal community groups, Oystercatcher monitoring volunteers, Second Nature Conservancy
	Protection of natural assets of high conservation values.	Support the introduction and implementation of Council by-laws related to dogs on lead on beaches and high value areas.	High (threat)	Council, Land owners, community, coastal community groups
	Incursion of multiple dune grass weed species is limiting suitable habitat for beach-nesting birds.	Support the staged removal of introduced weedy grasses and restoration of spinifex dunes.	High (threat)	Council, Land managers, LHF, NAC business/contractors/rangers, coastal community groups, Friends of the Hooded Plover, Fleurieu Peninsula volunteers, Second Nature Conservancy
		Increase community awareness of habitat needs for beach-nesting birds species.	High (threat/cons)	Council, Land managers, LHF, coastal community groups, Friends of the Hooded Plover, Fleurieu Peninsula volunteers
	Nearshore habitats (soft bottom / bare sand habitats)	Limited understanding of nearshore habitats and species assemblages.	Biological surveys of the soft bottom habitat.	High (cons)
Climate (Seasonal freshwater soaks to rear of dunes)	There is evidence of freshwater soaks to the rear of some sections of the sand dunes ie presence of other freshwater sedge species.	Prior to any major land division of the lower lying lands /seasonal floodplains behind the dunes, a study, including piezometer testing to ascertain combined risk from rising saline ground water due	Medium (threat)	DEW, CPB, Plan SA, Council, Crown lands, LHF, Department for Housing and Urban Development (DHUD)

Component	Issue	Proposed action	Priority	Key players
	<p>There is also freshwater pooling of these lower lying areas following high rainfall events and ongoing issues with managing stormwater from incremental land divisions.</p> <p>With more intense rainfall events, the combined interaction of seasonal flooding and interactions with rising saline ground water from sea level rise is increasingly uncertain.</p>	to sea level rise and seasonal and high rainfall events. This research should be part of stormwater management planning for infill development in these lower lying areas.		
Climate (Beach and Dunes)	<p>Increased sea levels and more intense storms and higher winds can contribute to more frequent and intense wave action, which accelerates beach and dune erosion.</p> <p>Predicted increases in aridity can lead to reduced vegetation cover and increased dune drift and dune mobility.</p>	Restrict public access to dunes.	High (cons /threat)	NPWSSA, council, coastal community groups.
		Implement restoration of native plant species.	High (cons/threat)	Council, coastal community groups, LHF, NAC business/contractors/rangers, Second Nature Conservancy
		Monitor beach profiles to determine recession rate of beaches and sand dunes.	High (cons/threat)	CPB, DEW, Council
		Monitoring of cross-shore dune, beach and nearshore sand level profiles.	Low (Hazard) Medium (cons/threat)	DEW CPB, Research Institutions, Universities.
	<p>Increased sea levels and more intense storms and higher winds can contribute to more frequent and intense wave action, which accelerates beach and dune erosion.</p> <p>Predicted increases in aridity can lead to reduced vegetation cover and increased dune drift and dune mobility.</p>	Potential impact of increased development within cell and adjacent land for housing i.e. increase of stormwater directed into Tokuremoar Reserve.	High (cons/threat)	CPB, DEW, Council
		Support cultural monitoring and communications to protect significant known heritage sites	High (threat)	NAC, First nations business/ contractors/ rangers, Council, DEW, LHF, coastal community groups
		Beach and dune topographic and photogrammetry drone surveys to provide detailed 2D and 3D digital surface models to monitor changes to the coastal landforms over time in response to climate change including more frequent and intense storm surge events and changes in wave climate and sea level rise.	Medium (cons/threat)	DEW CPB, Research Institutions, Universities.
		Update DEW Coastal Hazard Mapping spatial layer identifying the change in extent and stability of coastal dunes across South Australia since the previous hazard mapping was undertaken approximately 20 years ago.	High (Cons/threat)	DEW, CPB, Universities and research institutes
Physical changes on the coast and natural assets from sea level rise (such as coastal squeeze on tidal habitats, erosion, vegetation loss, marine turbidity and light reduction)	<p>Implementation of the Coastal Adaptation Plan, including key locations, recommendations and priorities for funding.</p> <p>Support partnerships for ongoing investigation and monitoring in the coastal zone, working with the Coast Protection Board to identify adaptation options and pathways for the future.</p>	High (Cons. Threat)	DEW, CPB, Council, SA Water, community, university and research agencies, consultancies, Climate Ready Coasts Program	

## Relevant management plans

- Alexandrina Council Environmental Action Plan 2030. (2023), Alexandrina Council.

- Alexandrina Coastal Park Concept Plan 2000
- Simon, B and Bain, S., (2015) Goolwa Dunes & Tokuremoar Reserve Environmental Action Plan 2015. Goolwa to Wellington LAP. Prepared for Natural Resources Adelaide and Mount Lofty Ranges.
- Caton B. Fotheringham D. Lock C. Royal M, Sandercock R. Taylor R. (2007). Southern Fleurieu Coastal Action Plan and Conservation Priority Study. Prepared for Adelaide and Mount Lofty NRM Board, Alexandrina Council, City of Victor Harbor, District Council of Yankalilla, Goolwa to Wellington Local Action Plan and Department for Environment and Heritage.
- Landscapes Hills and Fleurieu (2024) Hills and Fleurieu Regional Pest Plant and Animal Strategy 2024 - 2029.
- South Australian Recovery Plan for Eastern Osprey and White-bellied Sea Eagle (2022) Department for Environment and Water
- Ngarrindjeri Nation (2007) Ngarrindjeri Nation Yarlular-Ruwe Plan. Caring for Ngarrindjeri Sea Country and Culture. (Ngarrindjeri Tendi, Ngarrindjeri Heritage Committee and Ngarrindjeri Native Title Management Committee, Ngarrindjeri Land and Progress Association, Meningie).
- Ngarrindjeri and Others Native Title Claim (Part A) settlement Indigenous Land Use Agreement (ILUA) (2017) Government of SA Attorney General's Department
- Kungun Ngarrindjeri Yunnan Agreement (2009) between South Australian Government and the Ngarrindjeri Regional Authority (NRA).
- Croft (2023) Tokuremoar Reserve Vegetation Change Assessment 2015 – 2023. Prepared for Green Adelaide
- Wright S. & Seaman R. (1998) Tokuremoar Reserve Management Plan Part A & B
- Encounter Marine Park Management Plan (2012, amended 2020). Department for Environment and Water.
- Wavelength (2022) Coastal Adaptation Plan prepared for Alexandrina Council.
- Western, M, Hesp, P, Bourman, R 2019, Coastal Adaptation Study for Alexandrina Council, Integrated Coasts, South Australia
- Maguire, G. S. (2008). A practical guide to managing beach-nesting birds in Australia. Birds Australia, Melbourne, Australia.
- Habitat restoration for the Orange-bellied Parrot, Rural Solutions SA, 2004
- Ehmke, G., Herrod, A., Green R. and Tzaros, C. (2009), Habitat Protection and Restoration Plan for the Orange-bellied Parrot *Neophema chrysogaster* in the Southeast of South Australia, Birds Australia, Melbourne
- Stolarski A., (2024) Southern Fleurieu Peninsula coastal butterfly species assessment, A revision of the Butterfly Section of the Southern Fleurieu Coastal Action Plan and Conservation Priority Study 2007.
- BMT (2025), Climate Change Threats to Coastal Biodiversity in the Southern Fleurieu Region. Report prepared for Hills and Fleurieu Landscape Board as part of the review of the Southern Fleurieu Coastal Action Plan and Conservation Priority study (2007). BMT, Adelaide.

## References

BMT (2025), Climate Change Threats to Coastal Biodiversity in the Southern Fleurieu Region. Report prepared for Hills and Fleurieu Landscape Board as part of the review of the Southern Fleurieu Coastal Action Plan and Conservation Priority study (2007). BMT, Adelaide.

Bryars, S. (2003) An Inventory of Important Coastal Fisheries Habitats in South Australia. Fish Habitat Program, (Primary Industries and Resources South Australia: Adelaide).

Bryars, S. (2013) Nearshore marine habitats of the Adelaide and Mount Lofty Ranges NRM region: values, threats and actions. Report to the Adelaide and Mount Lofty Ranges Natural Resources Management Board, Dr Simon Richard Bryars, Adelaide.

Caton B. Fotheringham D. Lock C. Royal M, Sandercock R. Taylor R. (2007). Southern Fleurieu Coastal Action Plan and Conservation Priority Study. Prepared for Adelaide and Mount Lofty NRM Board, Alexandrina Council, City of Victor Harbor, District Council of Yankalilla, Goolwa to Wellington Local Action Plan and Department for Environment and Heritage.

DCCEEW (2013) Subtropical and temperate coastal saltmarsh Conservation Advice, *Environment Protection and Biodiversity Conservation Act 1999* (EPBC Act) (s266B).

Durante, L.M., Bailleul, F. and Beckmann, C.L. (2022) on-site survey of recreational fishing for Pipi in Goolwa, South Australia 2020-21. Final report to PIRSA Fisheries and Aquaculture. South Australian Research and Development institute (Aquatic Sciences), Adelaide.

- Ehmke, G., Herrod, A., Green R. and Tzaros, C. (2009), Habitat Protection and Restoration Plan for the Orange-bellied Parrot *Neophema chrysogaster* in the Southeast of South Australia, Birds Australia, Melbourne
- EPBC, 2000. Environment Protection and Biodiversity Conservation Regulations 2000, Canberra: Australian Government.
- Grund R (1997) Additional range extensions, new foodplant recordings and biology for some rarer South Australian butterflies including the life history for *Candalides cyprotus cyprotus* (Olfiff). *Victorian Entomologist* **27**, 7-14.
- Haig J., Russell B. and Murray-Jones S. (2006). Offshore marine habitat mapping and near-shore marine biodiversity within the Coorong bioregion. Report to Murray-Darling Basin NRM Board. 74 pp. Department for Environment and Heritage, Adelaide.
- Opperman, A., 1999, A Biological Survey of the South Australian Coastal Dune and Clifftop Vegetation, Environment Protection Agency, Department for Environment, Heritage and Aboriginal Affairs, Adelaide.
- PIRSA. (2014). Ecological Assessment of the South Australian Beach-Cast Seagrass and Marine Algae Fishery. Assessment report prepared for the Department of the Environment for the purposes of part 13 and 13(a) of the Environment and Protection and Biodiversity Conservation Act 1999.
- Rowling, K., Wiltshire, K. and Tanner, J.E. (2010) Baseline surveys of the marine environment adjacent to the proposed high salinity water discharge from the south lagoon of the Coorong. South Australian Research and Development Institute (Aquatic Sciences), Adelaide. SARDI Publication No. F2009/000694-1.
- Simon, B. and Bain, S., (2015) Goolwa Dunes & Tokuremoar Reserve Environmental Action Plan 2015. Goolwa to Wellington LAP. Prepared for Natural Resources Adelaide and Mount Lofty Ranges.
- Short, A.D. (2001) Beaches of the South Australian Coast and Kangaroo Island: A guide to their nature, characteristics, surf and safety. Australian Beach Safety and Management Program, Sydney.
- Stolarski A., (2024) Southern Fleurieu Peninsula coastal butterfly species assessment, A revision of the Butterfly Section of the Southern Fleurieu Coastal Action Plan and Conservation Priority Study 2007.
- Western, M, Hesp, P, Bourman, R 2019, Coastal Adaptation Study for Alexandrina Council, Integrated Coasts, South Australia
- Wildlife Health Australia (2018) National Wildlife Biosecurity Guidelines, Sydney NSW.
- Wildlife Health Australia (2020) National Guidelines for Management of Disease in Free-ranging Australian Wildlife, Sydney NSW.

## Cell Biota (Flora and Fauna)

Lists provided are specific to this cell from Biological Database of South Australia (BDBSA), technical updates, review of publications and local input. Conservation ratings (National, State and Sub regional) are included for flora and fauna.

Note: Restricted species as per Department for Environment and Water (DEW) specifications have been omitted from the tables due to the size of cells and requirement for 10km<sup>2</sup> buffering of data. However, records are included in the total species numbers per cell. Please contact DEW directly for restricted data requests.

### FLORA Summary

<b>Vegetation Block Metrics</b>	Tokuremoar Coastal Reserve Dedicated Heritage Agreement (ref HA1533) on private land (16.3 Ha) including 2.8 Ha within the cell boundary)			
<b>Terrestrial Habitat Description/s</b>	See Terrestrial biodiversity vegetation communities in cell description			
<b># Flora in cell</b>	294			
<b># Native Flora in cell</b>	170			
<b># Introduced Flora in cell</b>	124			
<b># Conservation Rated Flora in cell</b>	2 (0 national, 2 state)			
<b># Threatened Ecological Communities (EPBC Act)</b>	1 (Subtropical and Temperate Saltmarsh)			
<b>Conservation Rated Flora</b>	<b>Species</b>	<b>Common Name</b>	<b>EPBC Act Status</b>	<b>NPW Status</b>
	<i>Acacia dodonaeifolia</i>	Hop-bush Wattle		R
	<i>Eucalyptus fasciculosa</i>	Pink Gum		R

### All Native Flora in cell

<b>Species</b>	<b>Common Name</b>	<b>EPBC Status</b>	<b>NPW Act Status</b>	<b>Subregional Status*</b>
<i>Acacia cupularis</i>	Cup Wattle			LC
<i>Acacia dodonaeifolia</i>	Hop-bush Wattle		R	RA
<i>Acacia longifolia ssp. sophorae</i>	Coastal Wattle			LC
<i>Acacia paradoxa</i>	Kangaroo Thorn			LC
<i>Acacia pycnantha</i>	Golden Wattle			LC
<i>Acacia spinescens</i>	Spiny Wattle			LC
<i>Acaena echinata</i>	Sheep's Burr			LC
<i>Acaena X anserovina</i>	Hybrid Burr			
<i>Acrotriche affinis</i>	Ridged Ground-berry			LC
<i>Actites megalocarpus</i>	Coast Sow-thistle			NT
<i>Adriana quadripartita</i>	Coast Bitter-bush			LC
<i>Allocasuarina verticillata</i>	Drooping Sheoak			NT
<i>Amyema preissii</i>	Wire-leaf Mistletoe			RA
<i>Angianthus preissianus</i>	Salt Angianthus			LC
<i>Apium annuum</i>	Annual Celery			LC
<i>Apium prostratum var.</i>	Native Celery			
<i>Arthropodium strictum</i>	Common Vanilla-lily			LC
<i>Atriplex cinerea</i>	Coast Saltbush			LC
<i>Atriplex semibaccata</i>	Berry Saltbush			LC
<i>Austrofestuca littoralis</i>	Coast Fescue			LC

Species	Common Name	EPBC Status	NPW Act Status	Subregional Status*
<i>Austrostipa elegantissima</i>	Feather Spear-grass			LC
<i>Austrostipa flavescens</i>	Coast Spear-grass			LC
<i>Austrostipa scabra</i> ssp. <i>falcata</i>	Slender Spear-grass			LC
<i>Azolla rubra</i>	Pacific Azolla			LC
<i>Billardiera cymosa</i> ssp.	Sweet Apple-berry			
<i>Bursaria spinosa</i> ssp. <i>spinosa</i>	Sweet Bursaria			LC
<i>Caesia calliantha</i>	Blue Grass-lily			NT
<i>Caladenia latifolia</i>	Pink Caladenia			
<i>Caladenia verrucosa</i> <sup>^</sup>	Yellow-club Spider-orchid			
<i>Calandrinia eremaea</i>	Dryland Purslane			NT
<i>Calandrinia granulifera</i>	Pigmy Purslane			NT
<i>Callistemon rugulosus</i>	Scarlet Bottlebrush			VU
<i>Callitris gracilis</i>	Southern Cypress Pine			NT
<i>Callitris verrucosa</i>	Scrub Cypress Pine			
<i>Carpobrotus modestus</i>	Inland Pigface			NT
<i>Carpobrotus rossii</i>	Native Pigface			LC
<i>Cassytha glabella</i> f. <i>dispar</i>	Slender Dodder-laurel			LC
<i>Cassytha melantha</i>	Coarse Dodder-laurel			NT
<i>Cassytha pubescens</i>	Downy Dodder-laurel			NT
<i>Centrolepis polygyna</i>	Wiry Centrolepis			NT
<i>Clematis microphylla</i>	Old Man's Beard			LC
<i>Comesperma volubile</i>	Love Creeper			LC
<i>Crassula closiana</i>	Stalked Crassula			LC
<i>Crassula colligata</i> ssp.				
<i>Crassula colorata</i> var.	Dense Crassula			
<i>Crassula decumbens</i> var. <i>decumbens</i>	Spreading Crassula			LC
<i>Cynoglossum australe</i>	Australian Hound's-tongue			LC
<i>Cyperus gymnocaulos</i>	Spiny Flat-sedge			LC
<i>Cyperus vaginatus</i>	Stiff Flat-sedge			
<i>Daucus glochidiatus</i>	Native Carrot			LC
<i>Dianella brevicaulis</i>	Short-stem Flax-lily			LC
<i>Dianella brevicaulis/revoluta</i> var.	Black-anther Flax-lily			
<i>Dianella revoluta</i> var.				
<i>Dichondra repens</i>	Kidney Weed			LC
<i>Distichlis distichophylla</i>	Emu-grass			LC
<i>Dodonaea viscosa</i> ssp. <i>spatulata</i>	Sticky Hop-bush			LC
<i>Drosera glanduligera</i>	Scarlet Sundew			VU
<i>Drosera whittakeri</i>	Scented Sundew			LC
<i>Dysphania pumilio</i>	Small Crumbweed			LC
<i>Einadia nutans</i> ssp.	Climbing Saltbush			
<i>Einadia nutans</i> ssp. <i>nutans</i>	Climbing Saltbush			LC
<i>Enchylaena tomentosa</i> var.	Ruby Saltbush			
<i>Enchylaena tomentosa</i> var. <i>tomentosa</i>	Ruby Saltbush			LC
<i>Epilobium billardierianum</i> ssp.	Robust Willow-herb			
<i>Epilobium billardierianum</i> ssp.	Robust Willow-herb			LC
<i>Epilobium billardierianum</i> ssp. <i>cinereum</i>	Variable Willow-herb			NT
<i>Eucalyptus camaldulensis</i> ssp.	River Red Gum			
<i>Eucalyptus cneorifolia</i>	Kangaroo Island Narrow-leaf Mallee			

Species	Common Name	EPBC Status	NPW Act Status	Subregional Status*
<i>Eucalyptus cosmophylla</i>	Cup Gum			
<i>Eucalyptus diversifolia</i> ssp. <i>diversifolia</i>	Coastal White Mallee			LC
<i>Eucalyptus fasciculosa</i>	Pink Gum		R	LC
<i>Eucalyptus leptophylla</i>	Narrow-leaf Red Mallee			
<i>Eucalyptus leucoxydon</i> ssp.	South Australian Blue Gum			
<i>Eucalyptus odorata</i>	Peppermint Box			
<i>Exocarpos syrticola</i>	Coast Cherry			LC
<i>Ficinia nodosa</i>	Knobby Club-rush			LC
<i>Frankenia pauciflora</i> var.	Southern Sea-heath			
<i>Frankenia pauciflora</i> var. <i>gunnii</i>	Southern Sea-heath			LC
<i>Gahnia deusta</i>	Limestone Saw-sedge			NT
<i>Gahnia filum</i>	Thatching Grass			LC
<i>Gahnia</i> spp.^				
<i>Geranium potentilloides</i> var. <i>potentilloides</i>	Downy Geranium			LC
<i>Glycine rubiginosa</i>	Twining Glycine			RA
<i>Gnaphalium indutum</i> ssp. <i>indutum</i>	Tiny Cudweed			LC
<i>Goodenia radicans</i>	Shiny Swamp-mat			LC
<i>Hakea mitchellii</i> ^	Heath Needlebush			LC
<i>Hakea rugosa</i>	Dwarf Hakea			LC
<i>Hakea vittata</i>	Limestone Needlebush			LC
<i>Haloragis aspera</i> ^	Rough Raspwort			
<i>Helichrysum leucopsidum</i>	Satin Everlasting			LC
<i>Heliotropium europaeum</i>	Common Heliotrope			
<i>Hemichroa pentandra</i>	Trailing Hemichroa			LC
<i>Hibbertia sericea</i>	Silky Guinea-flower			LC
<i>Hydrocotyle capillaris</i>	Thread Pennywort			LC
<i>Imperata cylindrica</i> ^	Blady Grass			
<i>Isolepis cernua</i>	Nodding Club-rush			NT
<i>Juncus bufonius</i>	Toad Rush			RA
<i>Juncus kraussii</i>	Sea Rush			LC
<i>Kennedia prostrata</i>	Scarlet Runner			LC
<i>Kunzea pomifera</i>	Muntries			LC
<i>Lachnagrostis billardierei</i> ssp. <i>billardierei</i>	Coast Blown-grass			RA
<i>Lawrencia glomerata</i>	Clustered Lawrencia			RA
<i>Lawrencia spicata</i>	Salt Lawrencia			LC
<i>Lawrencia squamata</i>	Thorny Lawrencia			RA
<i>Lemna disperma</i>	Common Duckweed			LC
<i>Lepidosperma carphoides</i>	Black Rapier-sedge			LC
<i>Lepidosperma gladiatum</i>	Coast Sword-sedge			LC
<i>Lepidosperma hispidulum</i>	Spreading Sword-sedge			
<i>Lepidosperma</i> spp.^				
<i>Leucophyta brownii</i>	Coast Cushion Bush			LC
<i>Leucopogon parviflorus</i>	Coast Beard-heath			LC
<i>Linum marginale</i>	Native Flax			NT
<i>Lomandra effusa</i> ^	Scented Mat-rush			LC
<i>Lomandra juncea</i>	Desert Mat-rush			NT
<i>Lomandra leucocephala</i> ssp. <i>robusta</i>	Woolly Mat-rush			NT
<i>Lomandra micrantha</i> ssp.	Small-flower Mat-rush			

Species	Common Name	EPBC Status	NPW Act Status	Subregional Status*
<i>Lotus australis</i>	Austral Trefoil			LC
<i>Lysiana exocarpi</i> ssp. <i>exocarpi</i>	Harlequin Mistletoe			LC
<i>Lythrum hyssopifolia</i>	Lesser Loosestrife			LC
<i>Malva preissiana</i>	Australian Hollyhock			
<i>Melaleuca halmaturorum</i>	Swamp Paper-bark			LC
<i>Melaleuca lanceolata</i>	Dryland Tea-tree			NT
<i>Muehlenbeckia gunnii</i>	Coastal Climbing Lignum			LC
<i>Myoporum insulare</i>	Common Boobialla			LC
<i>Olearia axillaris</i>	Coast Daisy-bush			LC
<i>Oxalis perennans/exilis</i>	Native Oxalis			
<i>Ozothamnus turbinatus</i> <sup>^</sup>	Coast Bush-everlasting			LC
<i>Pelargonium australe</i>	Austral Stork's-bill			LC
<i>Picris angustifolia</i> ssp. <i>angustifolia</i> <sup>^</sup>	Coast Picris			
<i>Pimelea serpyllifolia</i> ssp. <i>serpyllifolia</i>	Thyme Riceflower			LC
<i>Pimelea stricta</i>	Erect Riceflower			NT
<i>Plantago hispida</i>	Hairy Plantain			RA
<i>Poa poiformis</i> var. <i>poiformis</i>	Coast Tussock-grass			LC
<i>Pseudognaphalium luteoalbum</i>	Jersey Cudweed			LC
<i>Ptilotus spathulatus</i>	Pussy-tails			
<i>Pultenaea tenuifolia</i>	Narrow-leaf Bush-pea			LC
<i>Rhagodia candolleana</i> ssp.	Sea-berry Saltbush			
<i>Rhagodia candolleana</i> ssp. <i>candolleana</i>	Sea-berry Saltbush			LC
<i>Rytidosperma caespitosum</i>	Common Wallaby-grass			
<i>Rytidosperma geniculatum</i>	Kneed Wallaby-grass			LC
<i>Sagina maritima</i>	Sea Pearlwort			LC
<i>Salicornia quinqueflora</i> ssp. <i>quinqueflora</i>	Beaded Samphire			LC
<i>Samolus repens</i>	Creeping Brookweed			LC
<i>Schoenoplectus pungens</i>	Spiky Club-rush			LC
<i>Schoenus nitens</i>	Shiny Bog-rush			LC
<i>Sebaea ovata</i>	Yellow Sebaea			NT
<i>Senecio glossanthus</i>	Annual Groundsel			
<i>Senecio phelleus</i>	Woodland Groundsel			
<i>Senecio pinnatifolius</i> group	Variable Groundsel			
<i>Senecio quadridentatus</i> <sup>^</sup>	Cotton Groundsel			LC
<i>Sonchus hydrophilus</i>	Native Sow-thistle			LC
<i>Spergularia marina</i>	Salt Sand-spurrey			NT
<i>Spergularia tasmanica</i>	Coast Sand-spurrey			
<i>Spinifex hirsutus</i>	Rolling Spinifex			LC
<i>Sporobolus virginicus</i>	Salt Couch			LC
<i>Styphelia humifusa</i>	Cranberry Heath			LC
<i>Suaeda australis</i>	Austral Seablite			LC
<i>Tecticornia pergranulata</i> ssp. <i>pergranulata</i>	Black-seed Samphire			LC
<i>Tetragonia implexicoma</i>	Bower Spinach			LC
<i>Thelymitra</i> sp. <sup>^</sup>	Sun Orchid			
<i>Threlkeldia diffusa</i>	Coast Bonefruit			LC
<i>Thyridia repens</i>	Creeping Monkey-flower			LC
<i>Triglochin mucronata</i>	Prickly Arrowgrass			RA
<i>Triglochin striata</i>	Streaked Arrowgrass			LC

Species	Common Name	EPBC Status	NPW Act Status	Subregional Status*
<i>Typha domingensis</i>	Narrow-leaf Bulrush			LC
<i>Vittadinia australasica</i> var. <i>australasica</i>	Sticky New Holland Daisy			LC
<i>Vittadinia cuneata</i> var.	Fuzzy New Holland Daisy			
<i>Wahlenbergia gracilentia</i>	Annual Bluebell			LC
<i>Wilsonia rotundifolia</i>	Round-leaf Wilsonia			NT
<i>Wurmbea dioica</i> ssp.^	Early Nancy			

^ denotes records from technical updates, review of publications and local input

\*See Appendices for subregional map

Regional Conservation status, Mount Lofty Ranges IBRA (Interim Biogeographical Regionalisation for Australia) subregion (Gillam & Urban (2014). Regional Species Conservation Assessment Project, Phase 1 Report - Regional Species Status Assessments, Adelaide and Mount Lofty Ranges NRM Region. DEWNR: SA)

RE = Regionally Extinct    CR = Critically Endangered    EN = Endangered  
 VU = Vulnerable    RA = Rare    NT = Near Threatened  
 LC = Least Concern    DD = Data Deficient    NE = Not Evaluated

### All Introduced Flora in cell

Species	Common Name	Red Alert Weeds	Declared Weeds	WONS
<i>Acacia cyclops</i>	Western Coastal Wattle	IC		
<i>Acacia saligna</i>	Golden Wreath Wattle	HP		
<i>Agave americana</i>	Century Plant	HP		
<i>Aira cupaniana</i>	Small Hair-grass			
<i>Ammophila arenaria</i>	Marram Grass	HP		
<i>Arctotheca calendula</i>	Cape Weed	HP		
<i>Arundo donax</i>	Giant Reed	HP	Yes	
<i>Asparagus asparagoides</i> f. <i>asparagoides</i>	Bridal Creeper (form)	IC	Yes	Yes
<i>Asphodelus fistulosus</i>	Onion Weed	HP		
<i>Atriplex prostrata</i>	Creeping Saltbush			
<i>Avellinia festucoides</i>	Avellinia			
<i>Avena barbata</i>	Bearded Oat			
<i>Brassica tournefortii</i>	Wild Turnip			
<i>Briza maxima</i>	Large Quaking-grass			
<i>Briza minor</i>	Lesser Quaking-grass			
<i>Bromus diandrus</i>	Great Brome			
<i>Bromus hordeaceus</i> ssp. <i>hordeaceus</i>	Soft Brome			
<i>Bromus madritensis</i>	Compact Brome			
<i>Bromus rubens</i>	Red Brome			
<i>Cakile maritima</i> ssp. <i>maritima</i>	Two-horned Sea Rocket			
<i>Carpobrotus edulis</i> ssp. <i>edulis</i>	Hottentot Fig	HP		
<i>Cenchrus clandestinus</i>	Kikuyu	HP		
<i>Centaurium erythraea</i>	Common Centaury			
<i>Cerastium balearicum</i>	Chickweed			
<i>Cerastium glomeratum</i>	Common Mouse-ear Chickweed			
<i>Chenopodium album</i>	Fat Hen			
<i>Chenopodium glaucum</i>	Glaucous Goosefoot			

Species	Common Name	Red Alert Weeds	Declared Weeds	WONS
<i>Chrysanthemoides monilifera ssp.</i>	Boneseed	IC	Yes	Yes
<i>Cirsium vulgare</i>	Spear Thistle			
<i>Citrullus amarus</i>	Bitter Melon			
<i>Coprosma repens</i>	New Zealand Mirror-bush	IC	Yes	
<i>Cotula coronopifolia</i>	Water Buttons			
<i>Cynodon dactylon var. dactylon</i>	Couch			
<i>Cynosurus echinatus</i>	Rough Dog's-tail Grass			
<i>Delairea odorata*</i>	Cape Ivy	IC		
<i>Diplotaxis muralis</i>	Wall Rocket			
<i>Disa bracteata*</i>	South African Weed Orchid			
<i>Dittrichia graveolens</i>	Stinkweed			
<i>Echium plantagineum</i>	Salvation Jane		Yes	
<i>Ehrharta calycina</i>	Perennial Veldt Grass	HP		
<i>Ehrharta longiflora</i>	Annual Veldt Grass			
<i>Ehrharta villosa</i>	Pyp Grass	IC		
<i>Erigeron sumatrensis</i>	Tall Fleabane			
<i>Erodium botrys</i>	Long Heron's-bill			
<i>Eucalyptus cornuta</i>				
<i>Euphorbia paralias</i>	Sea Spurge	HP		
<i>Euphorbia terracina</i>	False Caper	HP	Yes	
<i>Freesia leichtlinii</i>	Freesia	HP		
<i>Freesia spp.*</i>	Common Freesia			
<i>Galium murale</i>	Small Bedstraw			
<i>Gaudium laevigatum</i>	Coast Tea-tree		Yes	
<i>Gazania linearis</i>	Gazania	IC	Yes	
<i>Geranium molle</i>	Soft Geranium			
<i>Gladiolus tristis</i>	Evening-flower Gladiolus	HP		
<i>Gomphocarpus cancellatus</i>	Broad-leaf Cotton-bush	HP		
<i>Grevillea olivacea*</i>	Olive Grevillea			
<i>Heliotropium curassavicum</i>	Smooth Heliotrope			
<i>Helminthotheca echioides</i>	Ox-tongue			
<i>Hordeum marinum</i>	Sea Barley-grass			
<i>Hypochoeris glabra</i>	Smooth Cat's Ear			
<i>Hypochoeris radicata</i>	Rough Cat's Ear			
<i>Isolepis marginata</i>	Little Club-rush			
<i>Juncus capitatus</i>	Dwarf Rush			
<i>Lagurus ovatus</i>	Hare's Tail Grass			
<i>Leontodon rhagadioloides</i>	Cretan Weed			
<i>Limonium binervosum</i>	Dwarf Sea-lavender	IC		
<i>Lycium ferocissimum</i>	African Boxthorn	IC	Yes	Yes
<i>Lysimachia arvensis</i>	Pimpernel			
<i>Malva arborea</i>	Tree Mallow	HP		
<i>Marrubium vulgare</i>	Horehound	IC	Yes	
<i>Medicago polymorpha</i>	Burr-medic			
<i>Melilotus indicus</i>	King Island Melilot			
<i>Mesembryanthemum crystallinum</i>	Common Iceplant	HP		
<i>Moraea setifolia</i>	Thread Iris			
<i>Moraea spp.*</i>	Cape Tulip			
<i>Nicotiana glauca</i>	Tree Tobacco			

Species	Common Name	Red Alert Weeds	Declared Weeds	WONS
<i>Oenothera stricta ssp. stricta</i>	Common Evening Primrose			
<i>Olea europaea ssp. europaea</i>	Olive	IC		
<i>Oxalis pes-caprae</i>	Soursob			
<i>Parapholis incurva</i>	Curly Ryegrass			
<i>Pelargonium x asperum*</i>	Rose Geranium			
<i>Phalaris minor</i>	Lesser Canary-grass			
<i>Pinus halepensis</i>	Aleppo Pine	IC	Yes	
<i>Pinus radiata</i>	Radiata Pine	IC		
<i>Plantago bellardii</i>	Hairy Plantain			
<i>Plantago coronopus ssp.</i>	Bucks-horn Plantain			
<i>Plantago lanceolata var. lanceolata</i>	Ribwort			
<i>Poa bulbosa</i>	Bulbous Meadow-grass			
<i>Polycarpon tetraphyllum</i>	Four-leaf Allseed			
<i>Polygala myrtifolia*</i>	Myrtle-leaf Milkwort	IC	Yes	
<i>Polypogon maritimus</i>	Coast Beard-grass			
<i>Polypogon monspeliensis</i>	Annual Beard-grass			
<i>Reichardia tingitana</i>	False Sowthistle			
<i>Rhamnus alaternus</i>	Blowfly Bush	IC	Yes	
<i>Romulea minutiflora</i>	Small-flower Onion-grass			
<i>Romulea rosea var. australis</i>	Common Onion-grass			
<i>Rostraria cristata</i>	Annual Cat's-tail			
<i>Rumex acetosella</i>	Sorrel			
<i>Rumex crispus</i>	Curled Dock			
<i>Sabulina mediterranea</i>	Slender Sandwort			
<i>Sagina apetala</i>	Annual Pearlwort			
<i>Salvia verbenaca var. verbenaca</i>	Wild Sage			
<i>Scabiosa spp.*</i>	Scabiosa/Pin cushion			
<i>Senecio angulatus</i>	Cape Ivy	IC		
<i>Senecio pterophorus</i>	African Daisy			
<i>Senecio vulgaris</i>	Common Groundsel			
<i>Sherardia arvensis</i>	Field Madder			
<i>Sixalix atropurpurea</i>	Pincushion	IC		
<i>Solanum linnaeanum</i>	Apple Of Sodom	HP	Yes	
<i>Solanum nigrum</i>	Black Nightshade			
<i>Sonchus asper ssp.</i>	Rough Sow-thistle			
<i>Sonchus oleraceus</i>	Common Sow-thistle			
<i>Stenotaphrum secundatum</i>	Buffalo Grass	HP		
<i>Symphyotrichum subulatum</i>	Aster-weed	HP		
<i>Thinopyrum junceiforme</i>	Sea Wheat-grass	IC		
<i>Tribulus terrestris*</i>	Caltrop		Yes	
<i>Trifolium arvense var. arvense</i>	Hare's-foot Clover			
<i>Trifolium campestre</i>	Hop Clover			
<i>Trifolium dubium</i>	Suckling Clover			
<i>Trifolium scabrum</i>	Rough Clover			
<i>Vicia sativa ssp. sativa</i>	Common Vetch			
<i>Vulpia muralis</i>	Wall Fescue			
<i>Vulpia myuros f. myuros</i>	Rat's-tail Fescue			
<i>Zaluzianskya divaricata</i>	Spreading Night-phlox			

**WONS** = Weeds of National Significance.

**Declared** = Declared under the Landscape South Australia Act 2019. Pest plants that are a significant threat to agriculture, the natural environment and public health and safety are called declared plants. Land owners have a legal responsibility to manage these plants.

**Red Alert** = Weed Threat Level of four or greater out of nine. Plants in this categorised are either designated as requiring immediate control (IC – 6-9) or as a high priority for control (HP – 4-5). See Department for Environment and Water (2024)

**Reference** – Department for Environment and Water (2024). Threatening Processes - Environmental and Priority Weed Species. Southern Fleurieu Coastal Action Plan Review 2024. Prepared by SA Herbarium

## FAUNA Summary

# Fauna in cell	149
# Native Fauna in cell	137
# Introduced Fauna in cell	12
# Conservation Rated Fauna in cell	22* (7 national, 19 state)

Conservation Rated Fauna				
Species Name	Common Name	Class	EPBC Act Status	NPW Act Status
<i>Anthochaera chrysoptera</i>	Little Wattlebird	AVES	ssp	
<i>Cereopsis novaehollandiae</i>	Cape Barren Goose	AVES		R
<i>Cladorhynchus leucocephalus</i> <sup>^</sup>	Banded Stilt	AVES		V
<i>Coturnix ypsilophora australis</i>	Brown Quail	AVES		V
<i>Gallinago hardwickii</i> <sup>^</sup>	Latham's Snipe	AVES	VU	R
<i>Haematopus fuliginosus fuliginosus</i>	Sooty Oystercatcher	AVES		R
<i>Haematopus longirostris</i>	Pied Oystercatcher	AVES		R
<i>Haliaeetus leucogaster</i> <sup>^</sup>	White-bellied Sea Eagle	AVES		E
<i>Larus dominicanus dominicanus</i>	Kelp Gull	AVES		R
<i>Lichenostomus cratitius</i>	Purple-gaped Honeyeater	AVES		ssp
<i>Neophema elegans elegans</i>	Elegant Parrot	AVES		R
<i>Pandion haliaetus cristatus</i> <sup>^</sup>	Eastern Osprey	AVES		E
<i>Platycercus elegans</i>	Crimson Rosella	AVES	ssp	
<i>Plegadis falcinellus</i> <sup>^</sup>	Glossy Ibis	AVES		R
<i>Spatula rhynchotis</i> <sup>^</sup>	Australasian Shoveler	AVES		R
<i>Thinornis cucullatus cucullatus</i>	Hooded Plover	AVES	VU	V
<i>Tringa nebularia</i>	Common Greenshank	AVES	EN	
<i>Zanda funerea whiteae</i>	Yellow-tailed Black Cockatoo	AVES		V
<i>Pteropus poliocephalus</i> <sup>^</sup>	Grey-headed Flying-fox	MAM	VU	R
<i>Rattus lutreolus</i> <sup>^</sup>	Swamp Rat	MAM		R
<i>Tachyglossus aculeatus</i> <sup>^</sup>	Short-beaked Echidna	MAM	ssp	ssp
<i>Trichosurus vulpecula</i> <sup>^</sup>	Common Brushtail Possum	MAM		R

## All Native Fauna in cell

Species Name	Common Name	Class	EPBC Act Status	NPW Act Status	Subregional Status
<i>Crinia signifera</i> <sup>^</sup>	Common Froglet	AMP			NT
<i>Limnodynastes dumerilii</i> <sup>^</sup>	Banjo Frog	AMP			NT
<i>Limnodynastes tasmaniensis</i> <sup>^</sup>	Spotted Marsh Frog	AMP			NT
<i>Neobatrachus pictus</i> <sup>^</sup>	Burrowing Frog	AMP			NT
<i>Rawlinsonia calliscelis</i>	South Australian Tree Frog (MLR MN)	AMP			NT
<i>Acanthiza chrysorrhoa</i>	Yellow-rumped Thornbill	AVES			LC
<i>Acanthiza nana</i>	Yellow Thornbill	AVES			RA
<i>Acanthiza pusilla samueli</i>	Brown Thornbill (MLR)	AVES			
<i>Accipiter cirrocephalus cirrocephalus</i>	Collared Sparrowhawk	AVES			RA
<i>Accipiter fasciatus fasciatus</i>	Brown Goshawk	AVES			LC

Species Name	Common Name	Class	EPBC Act Status	NPW Act Status	Subregional Status
<i>Acrocephalus australis australis</i>	Australian Reed Warbler	AVES			LC
<i>Anas gracilis gracilis</i>	Grey Teal	AVES			
<i>Anas superciliosa</i>	Pacific Black Duck	AVES			LC
<i>Anthochaera carunculata</i>	Red Wattlebird	AVES			LC
<i>Anthochaera chrysoptera</i>	Little Wattlebird	AVES	ssp		LC
<i>Anthochaera chrysoptera chrysoptera</i>	Little Wattlebird (mainland SA)	AVES			
<i>Anthus australis</i>	Australian Pipit	AVES			LC
<i>Cacatua sanguinea gymnopsis</i>	Little Corella	AVES			LC
<i>Cereopsis novaehollandiae novaehollandiae</i> <sup>^</sup>	Cape Barren Goose	AVES		R	
<i>Chalcites basalıs</i>	Horsfield's Bronze Cuckoo	AVES			NT
<i>Charadrius ruficapillus</i> <sup>^</sup>	Red-capped Plover	AVES			RA
<i>Cheramoeca leucosterna</i>	White-backed Swallow	AVES			RA
<i>Chroicocephalus novaehollandiae</i>	Silver Gull	AVES			LC
<i>Circus approximans</i>	Swamp Harrier	AVES			RA
<i>Cladorhynchus leucocephalus</i> <sup>^</sup>	Banded Stilt	AVES		V	VU
<i>Colluricincla harmonica</i>	Grey Shrike-thrush	AVES			LC
<i>Coracina novaehollandiae</i>	Black-faced Cuckooshrike	AVES			LC
<i>Corvus mellori</i>	Little Raven	AVES			LC
<i>Coturnix pectoralis</i>	Stubble Quail	AVES			LC
<i>Coturnix ypsilophora australis</i>	Brown Quail	AVES		V	
<i>Egretta novaehollandiae</i>	White-faced Heron	AVES			LC
<i>Elanus axillaris</i>	Black-shouldered Kite	AVES			LC
<i>Eolophus roseicapilla</i>	Galah	AVES			LC
<i>Falco berigora berigora</i>	Brown Falcon	AVES			LC
<i>Falco cenchroides cenchroides</i>	Nankeen Kestrel	AVES			LC
<i>Falco longipennis murchisonianus</i>	Australian Hobby	AVES			NT
<i>Fulica atra australis</i>	Eurasian Coot	AVES			NT
<i>Gallinago hardwickii</i> <sup>^</sup>	Latham's Snipe	AVES	VU	R	RA
<i>Gallinula tenebrosa tenebrosa</i>	Dusky Moorhen	AVES			RA
<i>Gavialis virescens</i>	Singing Honeyeater	AVES			LC
<i>Geopelia placida placida</i>	Peaceful Dove	AVES			LC
<i>Glossopsitta concinna</i>	Musk Lorikeet	AVES			LC
<i>Grallina cyanoleuca cyanoleuca</i>	Magpie-lark	AVES			LC
<i>Gymnorhina tibicen</i>	Australian Magpie	AVES			LC
<i>Haematopus fuliginosus fuliginosus</i>	Sooty Oystercatcher	AVES		R	VU
<i>Haematopus longirostris</i>	Pied Oystercatcher	AVES		R	VU
<i>Haliaeetus leucogaster</i> <sup>^</sup>	White-bellied Sea Eagle	AVES		E	EN
<i>Haliastur sphenurus</i>	Whistling Kite	AVES			LC
<i>Hirundo neoxena neoxena</i>	Welcome Swallow	AVES			LC
<i>Hydroprogne caspia</i>	Caspian Tern	AVES			LC
<i>Larus dominicanus dominicanus</i>	Kelp Gull	AVES		R	RA
<i>Larus pacificus georgii</i>	Pacific Gull	AVES			LC
<i>Lichenostomus cratitius</i>	Purple-gaped Honeyeater	AVES		ssp	VU
<i>Malurus cyaneus</i>	Superb Fairywren	AVES			LC
<i>Malurus cyaneus leggei</i>	Superb Fairywren (Mainland SA)	AVES			
<i>Melithreptus lunatus</i>	White-naped Honeyeater	AVES			RA
<i>Microcarbo melanoleucos melanoleucos</i>	Little Pied Cormorant	AVES			LC
<i>Neochmia temporalis temporalis</i>	Red-browed Finch	AVES			NT

Species Name	Common Name	Class	EPBC Act Status	NPW Act Status	Subregional Status
<i>Neophema elegans elegans</i>	Elegant Parrot	AVES		R	RA
<i>Ocyphaps lophotes lophotes</i>	Crested Pigeon	AVES			LC
<i>Pachycephala fuliginosa fuliginosa</i>	Western Whistler	AVES			
<i>Pachycephala rufiventris rufiventris</i>	Rufous Whistler	AVES			
<i>Pandion haliaetus cristatus</i> <sup>^</sup>	Eastern Osprey	AVES		E	
<i>Pardalotus striatus substriatus</i>	Striated Pardalote	AVES			NT
<i>Parvipsitta porphyrocephala</i>	Purple-crowned Lorikeet	AVES			LC
<i>Pelecanus conspicillatus</i>	Australian Pelican	AVES			LC
<i>Petrochelidon nigricans</i>	Tree Martin	AVES			LC
<i>Phalacrocorax carbo</i>	Great Cormorant	AVES			LC
<i>Phalacrocorax fuscescens</i> <sup>^</sup>	Black-faced Cormorant	AVES			NT
<i>Phalacrocorax sulcirostris</i>	Little Black Cormorant	AVES			LC
<i>Phaps chalcoptera</i>	Common Bronzewing	AVES			LC
<i>Phaps elegans elegans</i>	Brush Bronzewing	AVES			LC
<i>Phylidonyris novaehollandiae</i>	New Holland Honeyeater	AVES			LC
<i>Phylidonyris novaehollandiae novaehollandiae</i>	New Holland Honeyeater (mainland SA)	AVES			
<i>Platalea regia</i>	Royal Spoonbill	AVES			RA
<i>Platycercus elegans</i>	Crimson Rosella	AVES	ssp		LC
<i>Platycercus elegans fleurieuensis &amp; elegans</i>	Adelaide Rosella (MN, AP, MLR)	AVES			
<i>Plegadis falcinellus</i> <sup>^</sup>	Glossy Ibis	AVES		R	VU
<i>Poliiocephalus poliocephalus</i>	Hoary-headed Grebe	AVES			RA
<i>Pomatostomus superciliosus</i>	White-browed Babbler	AVES			NT
<i>Poodytes gramineus goulburni</i>	Little Grassbird	AVES			LC
<i>Porphyrio melanotus melanotus</i>	Australasian Swamphen	AVES			NT
<i>Psephotus haematonotus</i>	Red-rumped Parrot	AVES			LC
<i>Ptilotula penicillata</i>	White-plumed Honeyeater	AVES			LC
<i>Rhipidura albiscapa</i>	Grey Fantail	AVES			LC
<i>Rhipidura leucophrys leucophrys</i>	Willie Wagtail	AVES			LC
<i>Sericornis frontalis rosinae</i>	White-browed Scrubwren (MLR)	AVES			
<i>Spatula rhynchotis</i> <sup>^</sup>	Australasian Shoveler	AVES		R	NT
<i>Thalasseus bergii cristatus</i>	Greater Crested Tern	AVES			LC
<i>Thinornis cucullatus cucullatus</i>	Hooded Plover	AVES	VU	V	EN
<i>Threskiornis molucca molucca</i>	Australian White Ibis	AVES			LC
<i>Threskiornis spinicollis</i>	Straw-necked Ibis	AVES			LC
<i>Trichoglossus moluccanus moluccanus</i>	Rainbow Lorikeet	AVES			LC
<i>Tringa nebularia</i>	Common Greenshank	AVES	EN		NT
<i>Tringa stagnatilis</i>	Marsh Sandpiper	AVES			RA
<i>Vanellus miles</i>	Masked Lapwing	AVES			LC
<i>Zanda funerea whiteae</i>	Yellow-tailed Black Cockatoo	AVES		V	RA
<i>Zosterops lateralis</i>	Silvereeye	AVES			LC
<i>Anisynta cynone cynone</i> <sup>^</sup>	Mottled Grass Skipper	INV			
<i>Danaus petilia</i> <sup>^</sup>	Lesser Wanderer	INV			
<i>Danaus plexippus plexippus</i> <sup>^</sup>	Monarch	INV			
<i>Delias aganippe</i> <sup>^</sup>	Wood White	INV			
<i>Geitoneura klugii</i> <sup>^</sup>	Common Xenica	INV			
<i>Hesperilla donnysa</i> <sup>^</sup>	Variable Sedge-skipper	INV			
<i>Hesperilla flavescens</i> <sup>^</sup>	Yellowish Sedge-skipper	INV			
<i>Junonia villida calybe</i> <sup>^</sup>	Meadow Argus	INV			

Species Name	Common Name	Class	EPBC Act Status	NPW Act Status	Subregional Status
<i>Lampides boeticus</i> <sup>^</sup>	Long-tailed Pea-blue	INV			
<i>Nacaduba biocellata biocellata</i> <sup>^</sup>	Two-spotted Line-blue	INV			
<i>Ocybadistes walkeri hypochlora</i> <sup>^</sup>	Southern Grass-dart	INV			
<i>Ogyris amaryllis meridionalis</i> <sup>^</sup>	Amaryllis Azure	INV			
<i>Pieris rapae rapae</i> <sup>^</sup>	Cabbage White	INV			
<i>Taractrocera papyria papyria</i> <sup>^</sup>	White-banded Grass-dart	INV			
<i>Theclinesthes albocinctus</i> <sup>^</sup>	Bitter-bush Blue	INV			
<i>Theclinesthes miskini miskini</i> <sup>^</sup>	Wattle Blue	INV			
<i>Theclinesthes serpentatus serpentatus</i> <sup>^</sup>	Salt-bush Blue	INV			
<i>Vanessa itea</i> <sup>^</sup>	Australian Admiral	INV			
<i>Vanessa kershawi</i> <sup>^</sup>	Australian Painted Lady	INV			
<i>Zizina otis labradus</i> <sup>^</sup>	Common Grass-blue	INV			
<i>Austronomus australis</i>	White-striped Free-tailed Bat	MAM			LC
<i>Chalinolobus gouldii</i>	Gould's Wattled Bat	MAM			LC
<i>Macropus fuliginosus</i>	Western Grey Kangaroo	MAM			LC
<i>Mormopterus planiceps</i>	Southern Free-tailed Bat	MAM			
<i>Pseudocheirus peregrinus</i> <sup>^</sup>	Common Ringtail Possum	MAM			
<i>Pteropus poliocephalus</i> <sup>^</sup>	Grey-headed Flying-fox	MAM	VU	R	
<i>Rattus lutreolus</i> <sup>^</sup>	Swamp Rat	MAM		R	RA
<i>Tachyglossus aculeatus</i> <sup>^</sup>	Short-beaked Echidna	MAM	ssp	ssp	
<i>Trichosurus vulpecula</i> <sup>^</sup>	Common Brushtail Possum	MAM		R	
<i>Vespadelus vulturnus</i>	Little Forest Bat	MAM			LC
<i>Wallabia bicolor</i> <sup>^</sup>	Swamp Wallaby	MAM			
<i>Aprasia striolata</i> <sup>^</sup>	Lined Worm-lizard	REP			LC
<i>Ctenophorus pictus</i> <sup>^</sup>	Painted Dragon	REP			
<i>Delma inornata</i> <sup>^</sup>	Olive Snake-lizard	REP			
<i>Lampropholis guichenoti</i> <sup>^</sup>	Garden Skink	REP			
<i>Pogona barbata</i> <sup>^</sup>	Eastern Bearded Dragon	REP			
<i>Pseudonaja textilis</i> <sup>^</sup>	Eastern Brown Snake	REP			
<i>Tiliqua rugosa</i> <sup>^</sup>	Sleepy Lizard	REP			
<i>Tiliqua scincoides</i> <sup>^</sup>	Eastern Bluetongue	REP			LC

**Class:** **ACT** = Actinopteri, **AMP** = Amphibia, **AVES** = Aves, **INV** = Invertebrates, **MAM** = Mammalia, **REP**= Reptilia

#### All Introduced Fauna in cell

Species	Common Name
<i>Alauda arvensis arvensis</i>	Eurasian Skylark
<i>Carduelis carduelis britannica</i>	European Goldfinch
<i>Columba livia</i>	Feral Pigeon
<i>Passer domesticus domesticus</i>	House Sparrow
<i>Spilopelia chinensis</i>	Spotted Dove
<i>Sturnus vulgaris vulgaris</i>	Common Starling
<i>Turdus merula merula</i>	Common Blackbird
<i>Felis catus</i> <sup>^</sup>	Domestic Cat (Feral Cat)
<i>Mus musculus</i> <sup>^</sup>	House Mouse
<i>Oryctolagus cuniculus</i> <sup>^</sup>	Rabbit (European Rabbit)
<i>Vulpes vulpes</i> <sup>^</sup>	Fox (Red Fox)
<i>Acridotheres tristis</i> <sup>^</sup>	Common Myna



Scan or click here to view the full  
**Southern Fleurieu Coastal Action Plan**  
[hf.landscape.sa.gov.au/SFCAP](http://hf.landscape.sa.gov.au/SFCAP)

Published by the Hills and Fleurieu Landscape Board  
 2026 | FIS 1107263