

# Southern Fleurieu Coastal Action Plan

## Fishery Beach (Parrewar-angk)

## to Cape Jervis (Pariwa)

### Cell F19

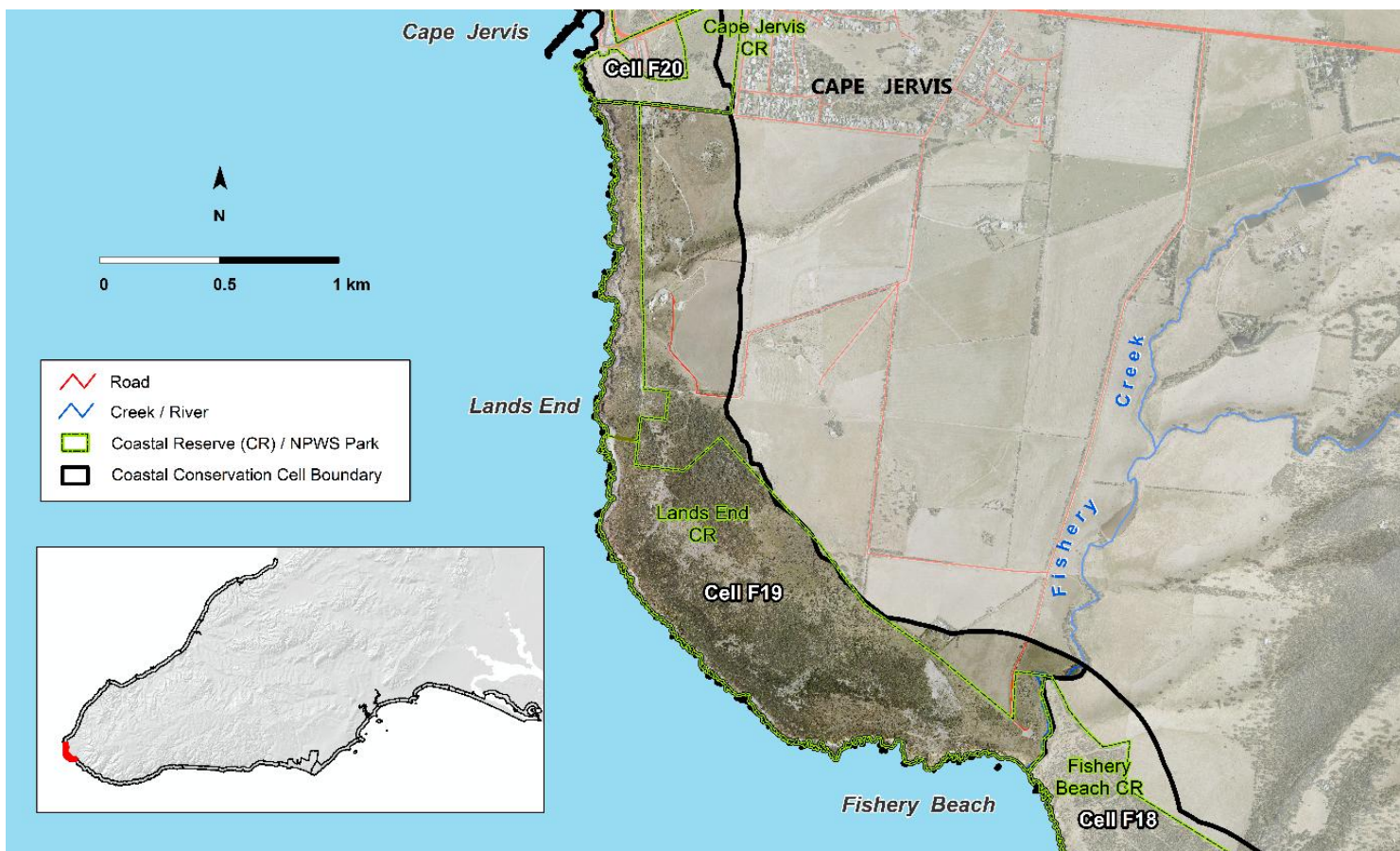
#### Overview

This cell has high conservation values, with multiple remnant vegetation communities that are not found elsewhere on the Southern Fleurieu. A series of Crown Land parcels under Coast Protection Board (CPB) management connect these coastal slopes, with substantial support from coastal community groups, to protect and restore biodiversity values in this cell.

High and increasing visitation from walkers using the Wild South Coast Way on the

Heysen Trail present an educational opportunity, but also put pressure on trails, in addition to informal camping, erosion and creek bank destabilisation within Fishery Creek estuary. Declared and red alert weeds and management of grazing pressure are key threats to this cell.

Valuable habitat for a range of coastal wildlife, including beach-nesting and shorebirds, coastal raptors, reptiles, and coastal woodland birds.



## Cell detail

This cell extends from Fishery Beach Creek approximately 4km to Sorata Street, Cape Jervis. This cell also includes Fishery Beach estuary at the end of Fishery Creek. This cell is in the District Council of Yankalilla local government area.

## Tenure, Land Use and Values

The cell has extensive coastal reserves when compared with other cells outside of the National Parks system and is managed by the CPB (DEW) and by the District Council of Yankalilla. Smaller pockets of private land are used for grazing farmland along the inner edge of the coastal boundary.

Native title has been determined for Ngarrindjeri people over land and sea Country within this cell under the *Native Title Act 1993 (Cth)*.

Increasing visitor numbers experience this coast through the recently upgraded section of the Heysen trail, the Wild South Coast Way, from Cape Jervis to Kent Reserve Victor Harbor. Within this cell the trail traverses coastal Crown land on the lower slopes, from the edge of the Cape Jervis township to the cell boundary at Fisheries Beach.

The cell is utilised for its walking trails with scenic views to Kangaroo Island, commercial, charter and recreational fishing, as well as recreational diving. According to Bryars (2013), the seagrass meadows and reefs around Fishery Beach are an important breeding aggregation habitat and commercial fishing area for Southern Calamari (*Sepioteuthis australis*). The reefs are important habitat and fishing areas for Southern Rock Lobster (*Jasus edwardsii*), Greenlip/Blacklip Abalone (*Haliotis laevigata/ Haliotis rubra*) and various fish species (Bryars 2013).

Fishery Beach is a designated State Heritage place (ref 18820 archaeological significance and is also valued for scenic vistas), as it was the former Cape Jervis Whaling Station, near the mouth of Fishery Creek. The Fishery Beach Heritage site is the entire foreshore of the area commonly known as Fishery Beach and includes all land on the two affected land titles which is situated between AMG northing line 238600 and AMG northing line 238900 and including the waters extending out 100 metres from the low water mark.

The Cape Jervis Whaling Station provides evidence of one of the Colony's first export industries, of which little is known or documented. It is one of a very small number of whaling station sites which have been located in South Australia. The site of the Cape Jervis Whaling Station at Fishery Creek, Cape Jervis, may yield information about the whaling industry, and the living and working conditions of the whalers engaged in this early staple industry. (HSA Assessment Report 5/2001).

Since 2012, the waters surrounding this cell are within the boundaries of the Encounter Marine Park.

The broader community is very passionate about this local environment. Local volunteer groups, such as Cape Jervis Coastal Community Group, The Conservation of our Threatened Species (COOTS) group, and Friends of Heysen Trail, have helped to conserve and revegetate the cell over many decades and will continue to play a supporting role in conservation and public awareness. Friends of the Hooded Plover Fleurieu Peninsula (supported by BirdLife Australia) monitor and raise awareness of beach nesting and shorebird species within the cell.

## Landforms

Coastal slopes and low bluffs. Between Cape Jervis and Fishery Beach resistant Pre-Cambrian and Palaeozoic meta-sedimentary rocks appear mainly in reefs and serrated shore platforms; these are overlain by Pleistocene aeolianite limestone and slope talus materials, which form slopes and cliffs above the ancient shore platforms (Caton et al 2007).

The coastline is predominantly rocky shores and slopes, although there are several small stretches of sandy beach (Fishery Beach, Lands End Beach) where the sand is trapped as it drifts north.



*Lands End, looking NW towards Cape Jervis. Wild South Coast Way (Heysen trail) in foreground  
(Coast Protection Board, March 2024)*

## First Nations cultural heritage and connection to land and sea Country

This cell holds high cultural value and significance for the Ramindjeri people of the Ngarrindjeri Nation. It forms part of their Dreaming stories and contains numerous stories, places, and artefacts of cultural importance. Ramindjeri cultural heritage is present throughout the entire cell, everywhere you tread. The Ramindjeri lived, hunted, played, swam, and danced here. Those working within and restoring these areas may encounter artefacts or evidence of cultural significance to the Ramindjeri people and the broader Ngarrindjeri Nation. These areas must be known, recognised, respected, and protected.

Creeks, wetlands, estuaries, dunes, cliff lines, islands and coastal areas are important gathering places that support a variety of habitats and food sources essential for sustaining and protecting Nga:tji . Nga:tji are the personal totems of the Ngarrindjeri people. They embody deep cultural values, symbolising kinship, spiritual protection, and an embedded responsibility to care for the land, waters, and ecosystems they inhabit.

This cell encompasses a range of culturally significant landscape features, including Dreaming sites, other important places, and multiple traditional camping and fishing grounds. Several sites within the cell contain tools, artefacts, and midden deposits scattered across the clifftops, sand hills, beaches, creeks, and estuaries. A Clan trade path also passes through Fishery Creek, illustrating the long-standing relationships between neighbouring clan groups and the exchange of locally sourced materials such as stone tools, food, and other cultural items.

This cell is also a particularly important site in the Ngurunderi Creation and Dreaming story, which tells of the Ngarrindjeri people's creation of the land and waters, including the River Murray and its mouth, Kandukang (west) and Tapalwora (east). This ancestral narrative extends westward along the southern coast of the Fleurieu Peninsula, encompassing the rugged shoreline, estuaries, and coastal landscapes all the way to Cape Jervis (Parrewar-angk). These areas hold deep cultural and spiritual significance for the Ramindjeri people, with Dreaming tracks, songlines, and important sites embedded throughout the region.

The coastline with its cliffs, beaches, and native vegetation reflects Ngurunderi's journey as he shaped the land, rested at key locations, and followed the tracks of his wives. Cape Jervis (Parrewar-angk) marks an important point in

this story, serving as both a physical and spiritual place in the landscape. It connects the mainland to Kangaroo Island (Ngarungawi), continuing the cultural narrative of creation, movement, and connection to Country.

Within this cell, the Ngurunderi Dreaming story tells how Ngurunderi stood high on the coastal slopes overlooking the water, calling out to his wives to return as they attempted to swim toward Ngarungawi (Kangaroo Island). His wives did not listen, and Ngurunderi called the sea to rise. As they reached the waters halfway between Parrewarangk (Cape Jervis) and Ngarungawi, the sisters grew weak. The younger sister, struggling against the swelling sea, let go of her net bag. Both sisters drowned and were transformed into the two islands, Maralangk and Meruwi (The Pages Islands North and South). The younger sister's net bag became the exposed rocks and reef near Meruwi.

*Please respect that cultural concepts and content included in this plan are the Aboriginal Cultural and Intellectual property (ACIP) of the Ramindjeri people of the Ngarrindjeri Nation (provided by Cedric Varcoe, Ramindjeri Cultural Leader living on Country) (cells 1-20). They may not be used or adapted by any other parties without consent.*

## Terrestrial biodiversity

### Whole cell

High conservation values exist within the cell, with large blocks of remnant coastal heathland vegetation (private and public lands), particularly between Fishery Beach and Lands End. Within the region and the state this cell is part of the Kanmantoo bioregion and considered a 'biodiversity hot spot' because of the range of habitats and species found here (Caton et al 2007). Many of these species are threatened and some are endemic to the region. Lower conservation value, but still important, areas include the shoreline and Fishery Creek (including the estuary habitats).



*Lands End looking east towards Fishery Beach (Coast Protection Board, March 2024)*

Values linked to the rarity of vegetation associations, numbers of threatened plant species, numbers of threatened bird species, total number of threatened species, and the significance of butterfly larvae habitat were all high for this cell. Aboriginal and European natural heritage, vegetation patch size, shape and connectivity all added values to the cell (Caton et al 2007).

This cell contains an unusually large number of distinct vegetation associations, including Spinifex (*Triodia compacta*) tussock grassland, Kangaroo Thorn (*Acacia paradoxa*) shrubland, Coast Daisy-Bush (*Olearia axillaris*) shrubland and Mallee Box (*Eucalyptus porosa*) woodland. Many of the patches of these vegetation associations are the only large patches within the Fleurieu coast and are, therefore, regionally significant and of high conservation value. Some Black Grass Saw-sedge (*Gahnia lanigera*) heath (the southernmost in the state) is found in this cell, the host plant for the Black and White Sedge-skipper (*Antipodia atralba*), which is recorded within the cell.

Biodiversity species values are high with several hundred native flora and fauna species recorded within the cell, demonstrating some of the highest species diversity and rarity values in the region.

Conservation rated flora species in this cell include Spiny Spear-grass (*Austrostipa echinata*), Australian Broomrape (*Orobanche cernua* var. *australiana*), Tate's Grass-tree (*Xanthorrhoea semiplana* ssp. *tateana*), Round-leaf Guinea-flower (*Hibbertia pallidiflora*), Scarlet Mintbush (*Prostanthera aspalathoides*), Flaccid Flat-sedge (*Cyperus flaccidus*), Early Sundew (*Drosera praefolia*), Broad-leaf Nancy (*Wurmbea latifolia* ssp. *vanessae*), Spoon-leaf Logania (*Logania minor*), and Narrow-leaf Wilsonia (*Wilsonia backhousei*).

Fauna species of conservation significance recorded in the cell include Eastern Reef Egret (*Egretta sacra*), Spotless Crake (*Zapornia tabuensis*), Common Sandpiper (*Actitis hypoleucos*), Sooty Oystercatcher (*Haematopus fuliginosus*), Hooded Plover (*Thinornis cucullatus cucullatus*), Painted Buttonquail (*Turnix varius varius*) and Elegant Parrot (*Neophema elegans elegans*).



*Elegant Parrot (Neophema elegans elegans) (M Stokes)*

Durant (2009) describes the Mallee Box (*Eucalyptus porosa*) woodlands at Lands End to have a shrubby understorey, quite dense in some places, in fair condition. Common shrubs include Twiggy Daisy-bush (*Olearia ramulosa*), Kangaroo Thorn (*Acacia paradoxa*), Bristly Guinea-flower (*Hibbertia riparia*) and Black-anther Flax-lily (*Dianella revoluta* var. *revoluta*). The area also includes stands of the regionally Rare Yacca sub-species Tate's Grass-tree (*Xanthorrhoea semiplana* ssp. *tateana*) – many of which are very old and well over 3m tall.

Dryland Tea-tree (*Melaleuca lanceolata*) woodland occurs on areas of shallow soils over limestone sheeting, supporting very open woodlands with sparse mature Dryland Tea-tree (*Melaleuca lanceolata*) over shrubs, herbs and grasses. The understorey consists of Coastal Beard Heath (*Leucopogon parviflorus*), Coast Daisy-Bush (*Olearia*

*axillaris*), Cup Wattle (*Acacia cupularis*), Kangaroo Thorn (*Acacia paradoxa*), Coastal Wattle (*Acacia longifolia* ssp. *sophorae*), Common Boobialla (*Myoporum insulare*), Muntries (*Kunzea pomifera*), Thyme Rice-flower (*Pimelea serpyllifolia* ssp. *serpyllifolia*) and many other small shrubs, sedges, climbers and grasses (Durant 2009). Small pockets of native herbland including Annual Rock-fern (*Cheilanthes austrotenuifolia*) exist within this association. This is the only remnant Dryland Tea-tree (*Melaleuca lanceolata*) woodland on the southern Fleurieu Peninsula and is, therefore, highly significant for conservation (Durant 2009).



*Dryland Tea-tree (Melaleuca lanceolata) woodland and Kangaroo Island in background (C Schultz)*

Low Black Grass Saw-sedge (*Gahnia lanigera*), Clustered Sword-sedge (*Lepidosperma congestum*) +/- Scented Mat-Rush (*Lomandra effusa*) sedgelands, with a diverse range of shrubs, herbs and grasses, occupy the coastal cliffs and headland at the end of Lands End Road (Durant 2009). Vegetation located near the previous trig point at the cliff edge, varies toward a shrubland and occurs with Mallee Pomaderris (*Pomaderris paniculosa* ssp. *paniculosa*) and Prickly Ground-berry (*Acrotriche patula*) shrubs. Other associated species include Muntries (*Kunzea pomifera*), Spiny Wattle (*Acacia spinescens*), Guinea Flower (*Hibbertia* spp.) Broad-leaf Nancy (*Wurmbea latifolia* ssp. *vanessae*) and Limestone Needlebush (*Hakea vittata*). No formal listing exists for this vegetation association, but it is uncommon in SA and is one of only a few patches (including a small area in the adjacent cell F20 in Fleurieu Avenue Reserve) in moderate to good condition across the southern Fleurieu (Durant 2009).

Durant (2009) describes low tussocks of Spinifex (*Triodia compacta*) with Muntries (*Kunzea pomifera*), Scarlet Runner (*Kennedia prostrata*), Dense Bush-pea (*Pultenaea densifolia*), Narrow-leaf Bush-pea (*Pultenaea tenuifolia*) are confined to the midslope in the north of the cell, wrapping either side of the coast below the trig point.



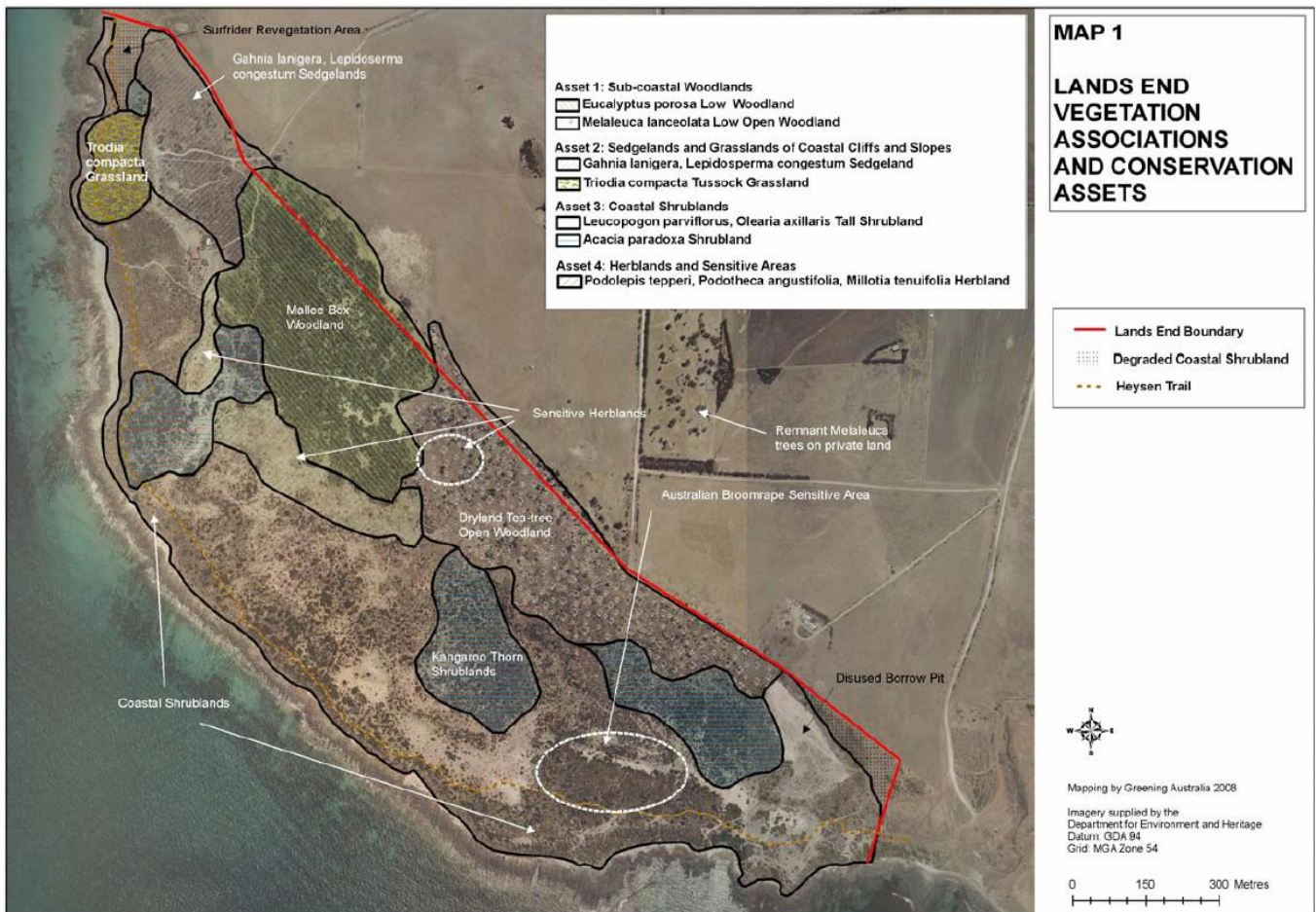
*Spinifex (Triodia compacta) tussock grassland across the coastal slopes of Lands End (C Schultz)*

Coast Beard-Heath (*Leucopogon parviflorus*), Coastal Bush Daisy (*Olearia axillaris*) +/- Coastal Wattle (*Acacia longifolia* ssp. *sophorae*) +/- Common Boobialla (*Myoporum insulare*) Tall Shrubland (*Acacia cupularis*), Thyme Rice-flower (*Pimelea serpyllifolia* ssp. *serpyllifolia*), Knobby Club-Rush (*Ficinia nodosa*), Scented Groundsel (*Senecio odoratus*), Coast Tussock-grass (*Poa poiformis* var. *poiformis*), Coast Blown-grass (*Lachnagrostis billardieri* var. *billardieri*), Sea-Berry Saltbush (*Rhagodia candolleana* ssp. *candolleana*) and Short Stem Flax-lily (*Dianella brevicaulis*).

Following extensive restoration efforts on site by land managers and volunteers that involved sustained mulching of Western Coastal Wattle (*Acacia cyclops*) on site, good regeneration of native species has established within these shrublands.

Kangaroo Thorn (*Acacia paradoxa*) shrublands occur at the southeastern end of this cell towards Fishery Beach. Vegetation varies from a low dense shrubland with few other species when it occurs near the coast, to a taller shrubland with coastal shrubs on the upper slopes and flats. Occurs with Coast Beard-Heath (*Leucopogon parviflorus*), Scented Groundsel (*Senecio odoratus*), Muntries (*Kunzea pomifera*) and Thyme Rice-flower (*Pimelea serpyllifolia* ssp. *serpyllifolia*) (Durant, 2009).

Small pockets of native herb lands, which are sensitive to disturbance, are within the areas of soil in the limestone capping on the seaward side of the Mallee Box/White Coastal Mallee woodlands. The main species here are Delicate Copper-wire Daisy (*Podolepis tepperi*), Sticky Long-heads (*Podotheca angustifolia*) and Soft Millotia (*Millotia tenuifolia*) (Durant 2009). Other populations of herblands occur within the Dryland Tea-tree woodlands, where Annual Rock-fern (*Cheilanthes austrotenuifolia*) and sparse shrubs of Sea Berry Saltbush (*Rhagodia candolleana* ssp. *candolleana*) persist. The State Rare and regionally Endangered Australian Broomrape (*Orobanche cernua* var. *Australiana*) has been identified within the cell.



Lands End vegetation associations and Conservation Assets (Durant 2009)

Significant native vegetation occurs on private land in Lot 101 Lands End Rd, and Lot 1 Lands End Rd in the north of the site (Durant 2009).

The fauna composition within Lands End is not well documented, however it could be inferred that landscape isolation and the comparatively small size of the remnant has already caused many local extinctions (Durant 2009). Sightings exist within the cell of Elegant Parrot (*Neophema elegans elegans*), Western Grey Kangaroo (*Macropus fuliginosus*), Short-beaked Echidna (*Tachyglossus aculeatus*), Sleepy Lizard (*Tiliqua rugosa*) and Tawny Rock Dragon (*Ctenophorus decresii*).

A population of Cunningham’s Skinks (*Egernia cunningham*) reside in rocky outcrops with large crevices south and adjacent to Fisheries Beach. This local subpopulation of the species is restricted to the coastal cliffs and nearby islands off the Fleurieu Peninsula from Cape Jervis to Victor Harbor.



*Cunningham's Skinks (Egernia cunninghami) reside in rocky outcrops with large crevices south and adjacent to Fisheries Beach (T Hands)*

The cell provides extensive and varied remnant butterfly habitat, with valuable hostplant patches across multiple species and ecological communities. Butterfly species of conservation significance recorded in this cell include Black and White Sedge-skipper (*Antipodia atralba*), Amaryllis Azure (*Ogyris amaryllis meridionalis*), Olane Azure (*Ogyris olane*), Fringed Heath-blue (*Neolucia agricola agricola*), Bitter-bush Blue (*Theclinesthes albocinctus*), as well as locally uncommon Wood White (*Delias aganippe*), Common Xenica (*Geitoneura klugii*), Common Brown (*Heteronympha merope merope*) and multiple common butterfly species that are observed across the Fleurieu Peninsula (Stolarski 2024).

Stolarski (2024) describes the Black and White Sedge-skipper (*Antipodia atralba*) as very localised and restricted to coastal heath areas where its larval food plant, Black Grass Saw-sedge (*Gahnia lanigera*), grows in large enough densities. Populations within and between sites fluctuate in densities in response to the availability of fresh Black Grass Saw-sedge (*Gahnia lanigera*) leaf growth favoured by larvae. The butterfly is very responsive to post fire plant growth and often attains large population numbers following such events. Black and White Sedge-skipper (*Antipodia atralba*) has a patchy distribution along the southern Fleurieu Peninsula and has been recorded from the following locations: Carrickalinga and Myponga South areas, Cape Jervis, Lands End and Newland Head Conservation Park.

Bitter-bush Blue (*Theclinesthes albocinctus*), whilst locally common at times, is subject to restricted population sites supporting Coast Bitter-bush (*Adriana quadripartita*), its only larval host plant, and if not available would not be able to exist. The butterfly is restricted to cells F4, F15, F19, F23 & F24 (Storlaski 2024).

Olane Azure (*Ogyris olane*) and Amaryllis Azure (*Ogyris amaryllis meridionalis*) butterflies are recorded in this cell and require mistletoes (*Amyema spp.*) as their larval hosts. These butterfly species are only recorded in cells F19, F23, F27 and F4, F15, F19 respectively (Storlaski 2024).



*Amaryllis Azure (Ogyris amaryllis meridionalis) on mistletoe (M Endacott)*

The Hooded Plover (*Thinornis cucullatus cucullatus*), vulnerable in South Australia, has previously nested at Lands End Beach and are regularly seen at this site, and irregularly at Fishery Beach. The semi remote nature of the beaches in this cell provides foraging habitats for shorebirds, including Sooty Oystercatchers (*Haematopus fuliginosus fuliginosus*), Caspian (*Hydroprogne caspia*) and Greater Crested Terns (*Thalasseus bergii cristatus*), Silver Gulls (*Chroicocephalus novaehollandiae novaehollandiae*) and Pacific Gulls (*Larus pacificus georgii*). Seagrass wrack (also known as Beach cast wrack) found regularly on beaches has an important ecological function recycling nutrients back to coastal waters as well as protection and stabilisation of the shoreline and coastal dunes by acting as a trap that binds drifting sands and reduces sand erosion during winter (PIRSA 2014). Beach wrack also provides an important role as habitat and shelter for Hooded Plovers (*Thinornis cucullatus cucullatus*) and Pied Oystercatcher (*Haematopus longirostris*) and Sooty Oystercatchers (*Haematopus fuliginosus fuliginosus*) as well as other shorebirds and juvenile fish. Beach cast wrack collection within Encounter Marine Park is prohibited in all zones except general managed use zones. Therefore, no removal of beach wrack is permitted in this cell.



*Juvenile Eastern Osprey (Pandion haliaetus cristatus) (K Bartley)*

The semi isolated nature, cliff lines and coastal slopes provide refuge and valued habitat for a range of seabird species, including the White-bellied Sea Eagle (*Haliaeetus leucogaster*), Eastern Osprey (*Pandion haliaetus cristatus*), Peregrine Falcon (*Falco peregrinus macropus*), Little Black Cormorant (*Phalacrocorax sulcirostris*), Black-faced Cormorant (*Phalacrocorax fuscescens*), Pacific Gull (*Larus pacificus georgii*) and Kelp Gull (*Larus dominicanus dominicanus*). Irregular sightings of a range of pelagic birds are also reported in this cell, including Albatrosses, Petrels, Shearwaters and Gannets.



*Australasian Gannet (Morus serrator) are one of several pelagic seabirds seen in this cell (M Stokes)*

Cape Barren Goose (*Cereopsis novaehollandiae novaehollandiae*), and Brown Quail (*Coturnix ypsilophora australis*) are occasional visitors to this cell.

### **Fishery Creek Estuary**

Fishery Creek is a recognised estuary (DEH 2007).

Fishery Creek estuary (fig 19.1) is unique with a rocky substrate within the stream bed of the estuary at the mouth of Fishery Creek and is approximately 15-25m wide. Situated on coastal lowland, tidal movement enters the estuary connecting the natural flow with surface water for most of the year, until warmer weather during summer retracts water to rock pools only (Telfer and Milne 2014).

Coastal slopes adjoining Fishery creek support several conservation species, including Sand Mat-rush (*Lomandra collina*), Soft Tussock Mat-rush (*Lomandra densiflora*), Cranberry Heath (*Astroloma humifusum*), Twining Glycine (*Glycine rubiginosa*), Austral Trefoil (*Lotus australis*), Rough Raspwort (*Haloragis aspera*), Wingless Fissure-plant (*Maireana enchylaenoides*) and Pussy-tails (*Ptilotus spathulatus*) (Greening Australia 2007), while the conservation rated Coast Plover-daisy (*Leiocarpa supina*) is recorded in this estuary. Telfer and Milne (2014) report good potential habitats, with 30-50% mix of stable habitat present and 12 native plant species recorded, indicating an 'Excellent' level of diversity for this type of plant community, Common Reed (*Phragmites australis*), Narrow-leaf Bulrush (*Typha domingensis*) and Lignum (*Duma florulenta*) swamps in permanent water.



*Fishery Creek Estuary (Telfer and Milne)*

Bird species that use the estuary within this cell as habitat include Common Sandpiper (*Actitis hypoleucos*), Eastern Reef Egret (*Egretta sacra*), Peregrine Falcon (*Falco peregrinus macropus*), Sooty Oystercatcher (*Haematopus fuliginosus fuliginosus*) and Hooded Plover (*Thinornis cucullatus cucullatus*) (Telfer and Milne 2014). Native Bush Rats (*Rattus fuscipes*) also use many of the estuary habitats across the southern Fleurieu.



*Common Sandpiper (Actitis hypoleucos) (D Westmoreland)*

## Estuarine Habitats: Fishery Creek



Produced by Landscapes Hills and Fleurieu  
 Date 30/11/2025 12:36 PM  
 Projection GDA 2020 South Australia

© Crown in right of the State of South Australia, Hills and Fleurieu Landscape Board. The HFLB does not guarantee that this map is error free. Use of the map is at the user's sole risk and the information contained on the map may be subject to change without notice.



0 25 50 100 Metres

-  Estuary Extent
-  Beach
-  Channel
-  Shore Platform

Fig 19.1 Fishery Creek estuarine habitats

## Vegetation Communities

### Coastal slopes

Dryland Tea-tree (*Melaleuca lanceolata*) + Drooping Sheoak (*Allocasuarina verticillata*) low woodland

- Dryland Tea-tree (*Melaleuca lanceolata*) + Drooping Sheoak (*Allocasuarina verticillata*) low woodland over a grassy and herbaceous understorey.

Dryland Tea-tree (*Melaleuca lanceolata*) low woodland

- Dryland Tea-tree (*Melaleuca lanceolata*) low woodland over Rusty Spear-grass (*Austrostipa eremophila*) + \* Bridal Creeper (*Asparagus asparagoides*) + Coastal Climbing Lignum (*Muehlenbeckia gunnii*) low tussock grasses

Mallee Box (*Eucalyptus porosa*) low woodland

- Mallee Box (*Eucalyptus porosa*) low woodland over Kangaroo Thorn (*Acacia paradoxa*) + Tate's Grass-tree (*Xanthorrhoea semiplana* ssp. *tateana*) + Coast Daisy-bush (*Olearia axillaris*) + Thyme Rice-flower (*Pimelea serpyllifolia* ssp. *serpyllifolia*) + Sea-berry Saltbush (*Rhagodia candolleana* ssp. *candolleana*) mid shrubs

Coast Daisy-bush (*Olearia axillaris*) tall open shrubland

- Coast Daisy-bush (*Olearia axillaris*) tall open shrubland over +/- Sea-berry Saltbush (*Rhagodia candolleana* ssp. *candolleana*) low shrubs over Coastal Climbing Lignum (*Muehlenbeckia gunnii*) + \*Pimpernel (*Lysimachia arvensis*) + \*Hare's Tail Grass (*Lagurus ovatus*) +/- Bower Spinach (*Tetragonia implexicoma*) + Coast Bonefruit (*Threlkeldia diffusa*)

Twiggy Daisy-bush (*Olearia ramulosa*) mid open shrubland

- Twiggy Daisy-bush (*Olearia ramulosa*) mid open shrubland over \*Hare's Tail Grass (*Lagurus ovatus*) + Sea-berry Saltbush (*Rhagodia candolleana* ssp. *candolleana*) + Prickly Ground-berry (*Acrotriche patula*) low shrubs over Variable Groundsel (*Senecio pinnatifolius* spp.) +/- Short-stem Flax-lily (*Dianella brevicaulis*) +/- Thyme Riceflower (*Pimelea serpyllifolia* ssp. *serpyllifolia*)

Twiggy Daisy-bush (*Olearia ramulosa*) Low Shrubland

- Twiggy Daisy-bush (*Olearia ramulosa*) Low Shrubland over Common Fringe-myrtle (*Calytrix tetragona*) +/- Prickly Ground-berry (*Acrotriche patula*) low shrubs +/- Quandong (*Santalum acuminatum*) +/- Dryland Tea-tree (*Melaleuca lanceolata*) over Black Grass Saw-sedge (*Gahnia lanigera*) +/- Clustered Sword-sedge (*Lepidosperma congestum*)

Kangaroo Thorn (*Acacia paradoxa*) + Twiggy Daisy-bush (*Olearia ramulosa*) mid open shrubland

- Kangaroo Thorn (*Acacia paradoxa*) + Twiggy Daisy-bush (*Olearia ramulosa*) mid open shrubland over +/- *Poa poiformis* var. *poiformis*, +/- \*Hare's Tail Grass (*Lagurus ovatus*) mid tussock grasses over Claspings Goodenia (*Goodenia amplexans*) + Coastal Climbing Lignum (*Muehlenbeckia gunnii*) + Short-stem Flax-lily (*Dianella brevicaulis*)

Black Grass Saw-sedge (*Gahnia lanigera*) / Clustered Sword-sedge (*Lepidosperma congestum*) Low sedgeland

- Black Grass Saw-sedge (*Gahnia lanigera*) + Satin Everlasting (*Helichrysum leucopsidium*) + Clustered Sword-sedge (*Lepidosperma congestum*) sedgeland over Scented Mat-rush (*Lomandra effusa*) tussocks

Spinifex (*Triodia compacta*) mid open hummock grassland

- Spinifex (*Triodia compacta*) mid open hummock grassland over Muntries (*Kunzea pomifera*) + Silky Guinea-flower (*Hibbertia sericea*)

### Coastal dunes

Coast Daisy-bush (*Olearia axillaris*) (mixed) shrubland >1m

- Coast Daisy-bush (*Olearia axillaris*) + Coast Beard-heath (*Leucopogon parviflorus*) + Coastal Wattle (*Acacia longifolia* ssp. *sophorae*) +/- Common Boobialla (*Myoporum insulare*) mid open shrubland over Sea-berry Saltbush (*Rhagodia candolleana* ssp. *candolleana*) low shrubs over Thyme Riceflower (*Pimelea serpyllifolia* ssp. *serpyllifolia*) + Bower Spinach (*Tetragonia implexicoma*) +/- Coastal Climbing Lignum (*Muehlenbeckia gunnii*) +/- Short-stem Flax-lily (*Dianella brevicaulis*)

### Estuary (Fishery Creek)

- Sea Rush (*Juncus kraussii*) + Stiff Flat-sedge (*Cyperus vaginatus*) +/- Short-stem Flax-lily (*Dianella brevicaulis*) Open sedgeland

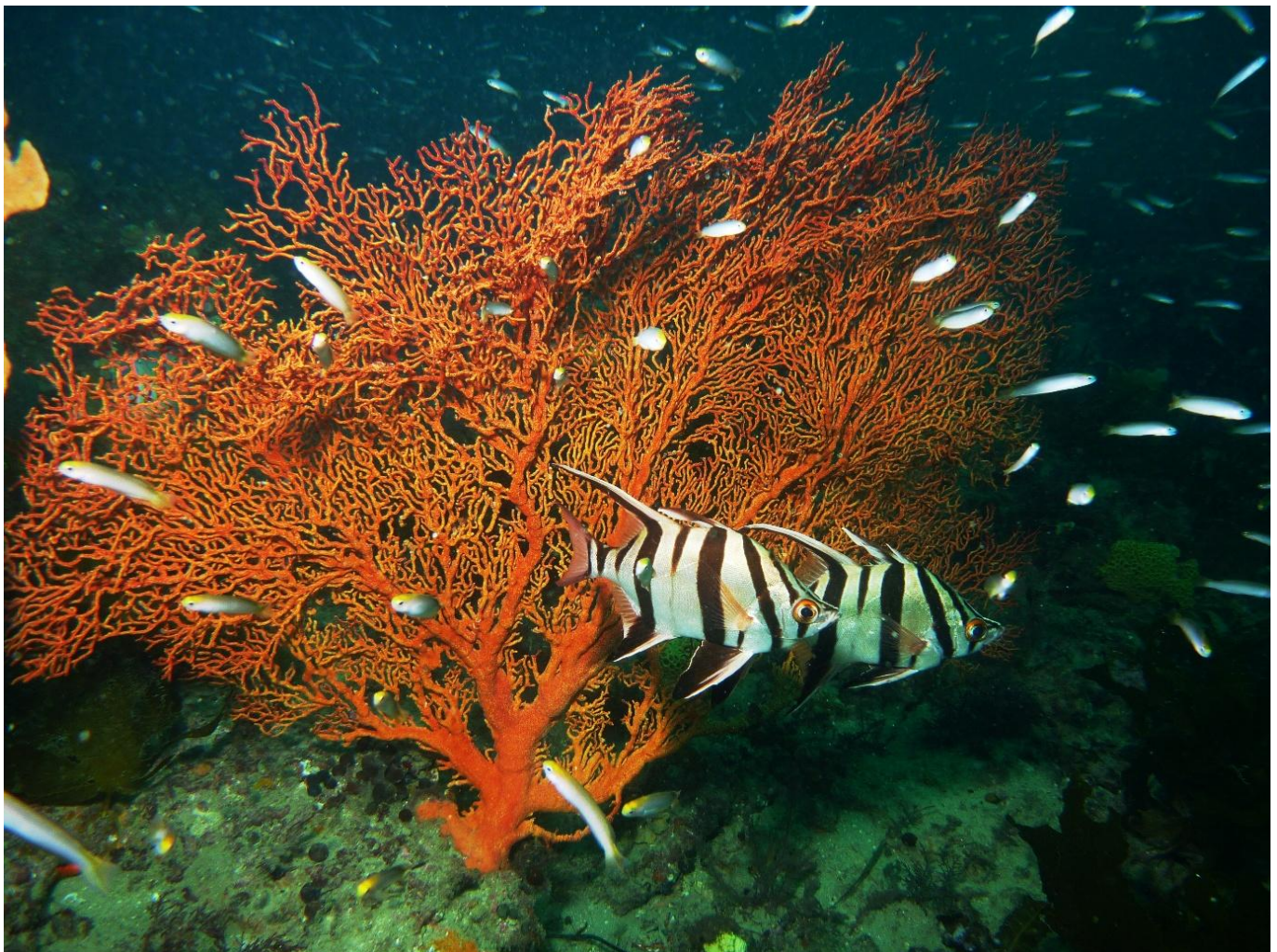
## Nearshore habitats

This cell forms part of the Encounter Marine Park. The marine areas of cell F19 are within a Habitat Protection Zone (HPZ-6).

Bryars (2013) describes the cell as dominated by three main habitats: continuous low profile reef that lies inshore along the entire coast, continuous medium seagrass that occurs adjacent to the reef along much of the coast, and patchy medium invertebrates on sand that occurs offshore throughout most of the cell (Figure 19.2). Some smaller areas of various other habitat types also occur scattered throughout the cell.

Subtidal reefs in the area are composed of limestone or metamorphic rock with a cover of macroalgae and sessile invertebrates (Turner et al. 2007, Baker et al. 2008, DEH 2008, Brook et al. 2020, Brock et al. 2023). The composition of the seagrass and invertebrate communities on sand in this cell has not been described (Bryars 2013). The inshore bare sand is characterised by a low-energy, reflective beach system at Lands End (Short 2001), with several isolated patches of bare sand in the midshore.

The cell is regionally significant due to the mixture of invertebrate, reef and seagrass habitats (Bryars 2013). The strong tidal flows through Backstairs Passage are particularly conducive to the growth of sessile invertebrate assemblages. Bryars (2013) describes the seagrass meadows are significant, as only one other substantial meadow occurs further to the east (at the western end of Cell F18) until Cell F14 is reached near Encounter Bay.



*Old wives (Enoplosus armatus) and branching Sea Fan (S Bryars)*

### Subtidal and intertidal reefs

Surveys of the subtidal reef at adjacent Fishery Beach and south of Cape Jervis have found a high diversity of fishes, invertebrates and macroalgae (Turner et al. 2007, DEH 2008, Shepherd and Baker 2008, Baker et al. 2009, Brook et al. 2020, Brock et al. 2023). The subtidal reef at Fishery Beach appears to have relatively high biodiversity compared to many other reefs around the Fleurieu Peninsula (DEH 2008).

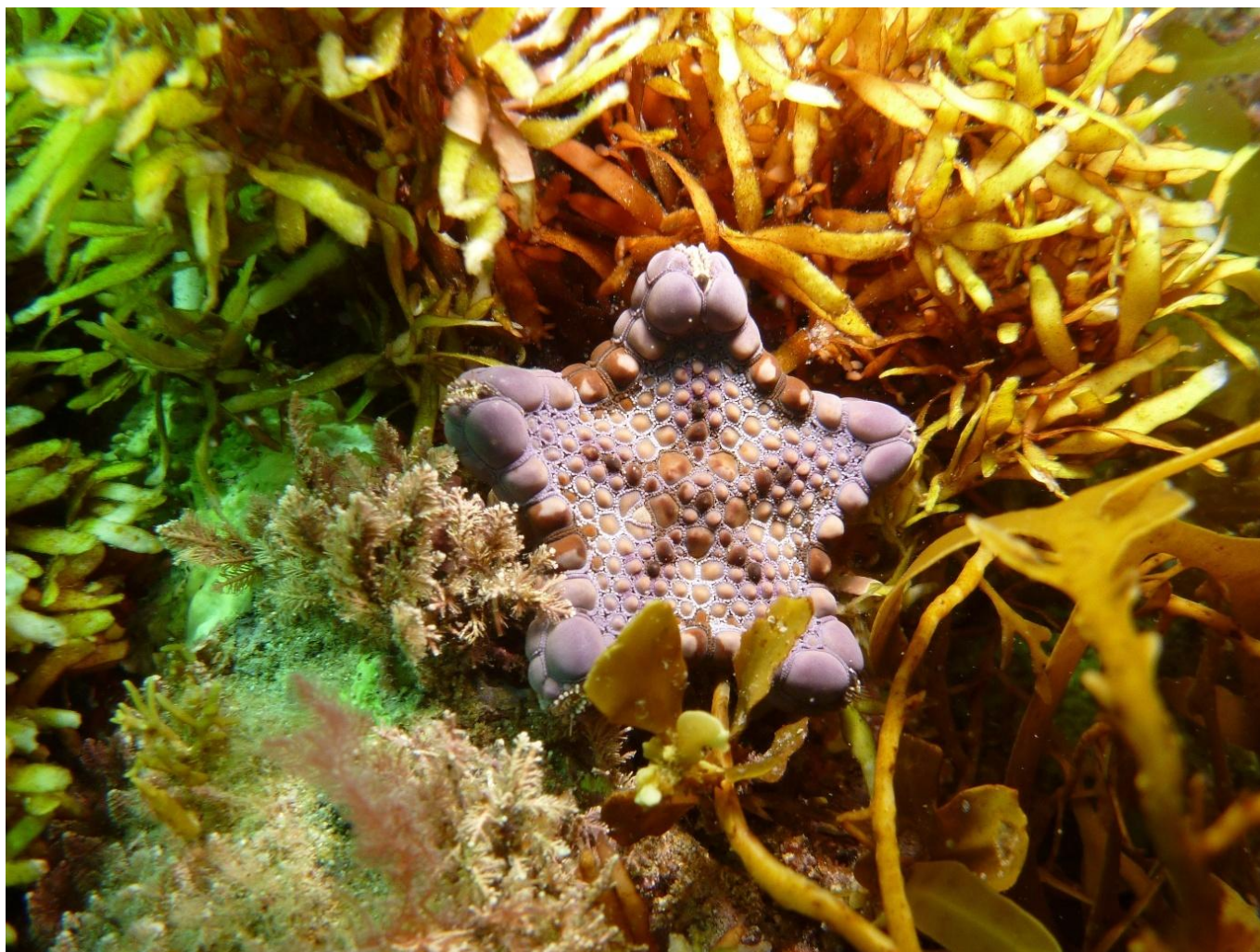
The intertidal reef at Fishery Beach has been surveyed for macroalgae, seagrasses and invertebrates (Benkendorff et al. 2008, Baring et al. 2010), and is characterised by a range of macroalgae (red, green and brown) and numerous (>25) mollusc species (Benkendorff et al. 2008). The cell lies within a region of low macroalgal species diversity; however, this is probably partly due to a low level of collection effort (see Baker and Gurgel 2010).

### Species diversity

Bryars (2003) listed nine fish and two macroinvertebrate species for the sheltered beach habitat at Fishery Beach, nine fish and two macroinvertebrate species for the seagrass habitat at adjacent Fishery Beach.

While the seagrass and invertebrate habitats are likely to support a range of species (e.g. see Bryars 2003), apart from mapping studies (DEH 2008), no habitat condition or biological surveys appear to have been undertaken on these habitats within Cell F19.

A Reef Health survey was conducted on the subtidal reef south of Cape Jervis in 2005 (Turner et al. 2007). Surveys for uncommon and cryptic reef fishes have been conducted in the cell (see Baker et al. 2008). Intertidal surveys have been conducted at Fishery Beach (e.g. Baring et al. 2010).



*Biscuit Seastar (Tosia australis) can be seen in a variety of colours throughout the region (S Bryars)*

# Nearshore Habitats: Cell F19

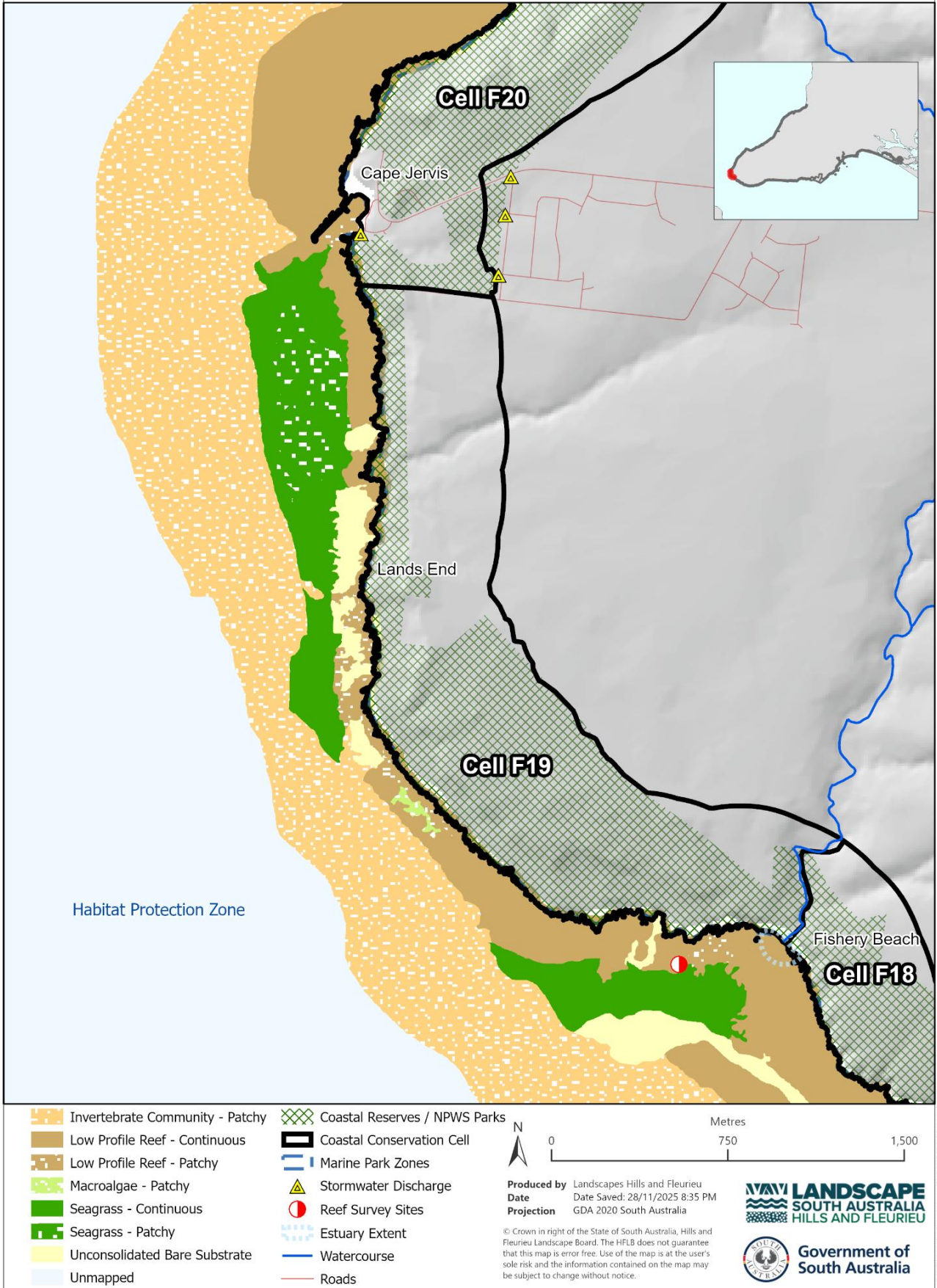


Figure 19.2. Nearshore habitats of Cell F19.

## Threats

### Whole Cell

Caton et al (2007) described this cell as being in the top five highest threat value cells of the plan. The major contributing threats to this high value are informal camping, land ownership, land use, percentage of exotic plants, vegetation block isolation, small remnant vegetation patch sizes, viewshed and viewscape. There also still remains a significant total for weed distribution in this cell.

As a recognised biodiversity hot spot, the combination of high conservation values and high threat values gives a high priority for action, to continue efforts in this cell to prevent degradation of the values by the various threats.

Increased visitation and usage of the Heysen Trail (Wild South Coast Way) via walkers, camp groups, and major events have the potential to increase weed incursions, damage vegetation, introduce litter, and disturb native fauna. Despite a relatively defined path, unintended foot traffic wanders off tracks, which can result in additional tracks and damage to native vegetation.

Erosion on unstable slopes, areas of unrestricted foot traffic associated with the adjacent Heysen Trail (Wild South Coast Way) and surface water movement, threatens a small population of Spinifex (*Triodia compacta*), Black Grass Saw-sedge (*Gahnia lanigera*), Clustered Sword-sedge (*Lepidosperma congestum*) +/- Scented Mat-rush (*Lomandra effusa*) sedgeland, which is vulnerable to disturbance through foot traffic, slope erosion and rabbit grazing/digging (Durant 2009). There is also a major infestation of Sand Lupin (*Lupinus cosentinii*), on the western side of the coastal slope adjacent to area of Spinifex (*Triodia compacta*).

The following declared or red alert weeds were found in this cell: Bridal Creeper (*Asparagus asparagoides*), Gazania (*Gazania linearis*), African Boxthorn (*Lycium ferocissimum*), Western Coastal Wattle (*Acacia cyclops*), Sea Spurge (*Euphorbia paralias*), Tufted Honey-flower (*Melianthus comosus*), Olive (*Olea europaea* ssp. *europaea*), Khaki Weed (*Alternanthera pungens*), Golden Dodder (*Cuscuta campestris*), Lincoln Weed (*Diplotaxis tenuifolia*), Salvation Jane (*Echium plantagineum*), Three-corner Jack (*Rumex hypogaeus*), Cape Weed (*Arctotheca calendula*), Onion Weed (*Asphodelus fistulosus*), Kikuyu (*Cenchrus clandestinus*), Broad-leaf Cotton-bush (*Gomphocarpus cancellatus*), Cape Honey-flower (*Melianthus major*), Pincushion (*Sixalix atropurpurea*), Soursob (*Oxalis pes-caprae*), Perennial Veldt Grass (*Ehrharta calycina*), Apple of Sodom (*Solanum linnaeanum*), Horehound (*Marrubium vulgare*), Black Flag (*Ferraria crispa* subsp. *crispa*), Caltrop (*Tribulus terrestris*), and African Love-grass (*Eragrostis curvula*).

Previous extensive and ongoing woody weed control of Tufted Honey-flower (*Melianthus comosus*), Bridal Creeper (*Asparagus asparagoides*), African Boxthorn (*Lycium ferocissimum*) and Western Coastal Wattle (*Acacia cyclops*), Sand Lupin (*Lupinus cosentinii*), Khaki Weed (*Alternanthera pungens*) has been undertaken on site over the last two decades. Control and mulching of the Western Coastal Wattle (*Acacia cyclops*) is improving the very shallow to non-existent soil, resulting in very good natural regeneration across the site.



*Western Coastal Wattle (Acacia cyclops) weed front control and mulching amongst recovering natural vegetation after a history of off-road vehicles (C Jackson)*

Pest animal threats to coastal fauna and flora from Rabbits (*Oryctolagus cuniculus*), Foxes (*Vulpes vulpes*), and feral Cats (*Felis catus*). Coordinated collaboration between landowners and managers is required to manage pest animals (refer to regional pest management strategies). Across this cell, Western Grey Kangaroos (*Macropus fuliginosus*), Fallow Deer (*Cervus dama*), and European Rabbits (*Oryctolagus cuniculus*), are causing impacts on native vegetation and revegetation programs, reducing plant diversity and habitat quality for other important and endangered species. Wild sheep (*Ovis aries*) are found on a semi regular basis in this cell and the neighbouring cell towards Deep Creek National Park, which impact regeneration and restoration efforts.

Damage to coastal slopes by informal camping, fishing (including boat launching) and recreational vehicle use has been a very serious threat to this cell in the past. Substantial efforts by land managers and community groups were undertaken, in reinforced fencing and compliance to remove this activity, particularly near Fishery Creek. Occasional informal camping within the carpark at Fishery Beach damages coastal environments and heritage sites.

Several butterfly and skipper species that have localised populations are limited in capacity for dispersal and/or colonisation of new sites. The lack of suitable habitats, weed invasion and interconnectivity between habitats prohibits movements and, therefore, creates localised isolation of populations. Several species are now restricted to pockets of isolated habitats, resulting in some being vulnerable to population collapse (Stolarski 2024).

On the beach and dunes, Sea Wheat-grass (*Thinopyrum junceiforme*) and *Euphorbia* spp. (*Euphorbia paralias* and *E. terracina*) are limiting Hooded Plover habitat and require management. Foxes are an issue at beaches within this cell and have impacted nesting, chick survival and fledging success.



*Lands End Beach with small sandy areas and rocky outcropping (C Taylor)*

Coastal raptors are recorded to utilise habitats within the cell, including Wedge-tailed Eagles (*Aquila audax audax*) that have established breeding territories. Current and potential future threats include disturbance, recreational and industrial use of drones, wind-farms and spread of urban development (Rowe et al 2018).

High conservation remnant vegetation associations occur on private land with limited protection, including a substantial portion of Black Grass Saw-sedge (*Gahnia lanigera*), Clustered Sword-sedge (*Lepidosperma congestum*) +/- Scented Mat-rush (*Lomandra effusa*) Low sedgeland

While the likelihood of a large fire at Lands End is relatively low, given its coastal location, a fire could have a serious impact on biodiversity due to the relatively small size of the remaining vegetation and the high current diversity of species (Durant 2009). A number of threatened species could be lost if the majority of the vegetation were to burn and there is a risk of further weed invasion in the post fire period.

A challenge for Council in this cell and others is accessibility to coastal areas for operational and compliance purposes. This issue can occur where Council land requires access via gated private land.

### **Estuary (Fishery Creek)**

Fishery Creek estuary has a variety of visitation impacts from activities such as walking, swimming, fishing, as well as drought conditions and grazing pressure (from stock in upper reaches and kangaroos across the cell), which are having an impact on native and introduced plant species, reducing plant cover and adding to existing increased erosion potential within creek lines.

The diversity and structure of the estuarine vegetation communities on the southern Fleurieu is threatened by introduced weedy species (Telfer and Milne 2014). Weeds recorded within the estuary and are considered widespread include Soursob (*Oxalis pes-caprae*), Annual Veldt Grass (*Ehrharta longiflora*) and Wild Oat (*Avena barbata*). Species for priority control include Bridal Creeper (*Asparagus asparagoides*), African Boxthorn (*Lycium ferocissimum*) and Western Coastal Wattle (*Acacia cyclops*) (Telfer and Milne 2014).

Some bank instabilities caused by extensive past clearance and coastal slope instability exist within most estuaries, as well as deposition of gravel, sand or fine sediment from upstream areas. Fishery Beach slope instability adjacent to lower Fishery Creek is due to previous off-road vehicle activity, leading to inshore and estuarine turbidity (Caton et al 2007). However, the potential impact of this threat on nearshore habitats has not been investigated (Bryars 2013).

Many of the estuaries within the region are considered to have poor flow to the sea, with upstream modification such as dams and weirs and extensive groundwater extraction decreasing environmental flows and potentially changing channel morphology (DEH 2007). Connectivity of these estuaries with the marine environment is largely observed through surface flow and marine incursion through storm surge or tidal flow and may be assisted by spring fed flows where available (Telfer and Milne 2014).

### **Nearshore habitats**

Bryars (2013) describes the coastline as sparsely populated, with minor (but unquantified) freshwater inputs including those from Fishery Creek. Stormwater and catchment water flow to nearshore environments, and nutrient and sediment inputs are likely to be relatively minor.

The risk of these threats to seagrass and reef habitats were considered low by Bryars (2013). No measurable threats to sand were identified. Due to the relatively large areas of seagrass and reef within the cell and the apparently low discharge of catchment water, it was considered unlikely that catchment water would have a minor consequence, with a risk rating of low for both habitats (Bryars 2013).

Cliff and coastal erosion to the south of Cape Jervis has been identified (Caton et al 2007) as an issue in the past and remediation efforts are now underway. The potential impacts on adjacent marine habitats from eroded sediment inputs during heavy rains are unknown.

Increased turbidity and sedimentation due to ferry operations and periodic dredging (which occur at Cape Jervis just to the north of the cell) could potentially impact nearby reefs (Bryars 2003). The potential threat of 'physical disturbance' from the Kangaroo Island ferry on adjacent reef habitats is from increased turbidity and sedimentation caused by the propellers and jets disturbing the sandy seabed at the ferry terminal, not physical disturbance per se. Nonetheless, Bryars (2013) considered it likely that this activity would have only a minor consequence, with a risk rating of low.

### **Marine debris surveys**

Long term bioregional monitoring (Fleurieu Peninsula, Yorke Peninsula, Gulf St Vincent, Kangaroo Island) of beach litter has been conducted at Lands End Beach since 2010 by the previous AMLRNRM Board and currently by Green Adelaide's marine debris program. Lands End Beach is one of four locations designated for biennial litter assessments on the south coast of the Fleurieu Peninsula. Litter items recovered from the site and subregion comprise plastic fragments, plastic packaging (food wrappers and bags), plastic bottle lids and caps, glass bottles and fishing rope and rope pieces (Peters and Flaherty, 2013).



*Marine debris collected as part of the survey of Lands End beach in 2024 (C Taylor)*

## Opportunities

### Whole cell

Manage visitor numbers and impacts to ensure coastal areas can support growing demand while maintaining and improving the quality of experiences without diminishing the values of the cell. Discourage the use of unwanted tracks to allow vegetation regeneration and reduce erosion impacts, improve signage and delineation of the Heysen Trail (Wild South Coast Way) and side tracks/ access points. Collaborate with First Nations communities, tourism operators and agencies to support community education and monitor visitor usage, with the aim of enhancing visitor awareness of coastal ecological and cultural values and promoting appropriate behaviours.

Community education opportunities regarding:

- Unique and valuable coastal landscape (for example, wildflowers, birds, and mammals)
- Fragile nature of coastal areas that are sensitive to foot traffic, soil compaction and erosion.
- Coastal gardens and resident/business owner education
- Increased cultural awareness training and knowledge of culturally appropriate processes to respect known cultural heritage sites for land managers and coastal community groups
- Impacts of shellfish removal and regulations related to harvest of intertidal organisms
- Beach-nesting birds, such as Hooded Plovers and Sooty Oystercatchers (dogs on leash, nesting sites, citizen science projects, managing visitor disturbance)
- Citizen science monitoring to contribute to intertidal reef monitoring, seagrass restoration, dolphin watch, beach pole monitoring, Fleurieu seabird monitoring program and beach nesting birds.
- Continued support to be provided to volunteers who have dedicated their time to these areas, aiming to foster a sense of community stewardship whilst achieving conservation goals.
- Value of place and coastal values, responsible beach use, importance of fallen wood / dead branches / for habitat and reducing human impact on dunes.
- There is opportunity for signage renewal across coastal areas to educate the community about coastal conservation, cultural significance and appropriate behaviours across the Fleurieu Peninsula coast.

Ongoing vigilance and compliance are needed of unauthorised vehicle access to coastal reserves to ensure areas are not further degraded. Restoration activities to repair erosion scarps and tracks is needed in some previously damaged areas.

This cell (along with beaches and lower slopes of Cape Jervis and Morgans Beach (F20)) is highlighted as one of three areas including Normanville Dunes (F23-F24) and The Bluff to Newland Head cell (F13-F15) the within this plan to have high conservation and high threat values. As a result, the priority of actions (conservation and threat) for these areas have been rated higher than in other cells and warrant prioritised effort and investment.

Weed management is a key priority to help retain the biodiversity values within the cell across the parcels of crown lands. Targeted control of declared and red alert weeds is a high priority, as they are actively invading intact native vegetation and displacing or choking out native plant species. Ongoing monitoring for, and mapping of, new weed infestations should also be undertaken as part of an ongoing weed control program, which is critical to addressing high priority weeds and maintaining conservation values for the cell.

Public coastal land managed by the CPB, private land at Cape Jervis, and adjacent to Lands End and Fishery Beach, have had considerable investment of effort by the community (individually and in voluntary association). The CPB, in conjunction with Landscapes Boards and the Council, have invested considerable resources through engagement of contractors in weed and access control and revegetation to reduce threats and support conservation values.



*Khaki Weed (Alternanthera pungens) is a weed with an active control program (LHF)*

Monitoring and further control of woody weed species (detailed above) is required to address weed threats and prevent reintroduction to the remnant vegetation across the whole cell. Other weeds, including Khaki Weed (*Alternanthera pungens*), require ongoing monitoring for re-emergence and destruction of any plants. Smaller populations of Golden Wreath Wattle (*Acacia saligna*), Perennial Veldt Grass (*Ehrharta calycina*), Gazania (*Gazania linearis*) and Olive (*Olea europaea ssp. europaea*) occur within the cell, but are highly invasive and, therefore, high priority for control.

Total grazing pressure, by both native and introduced fauna, should be monitored to determine impacts to plant diversity and habitat quality. Reduce the grazing and soil disturbance impacts of over-abundant Western Grey Kangaroos, continue to reduce rabbit numbers at the site and surrounding private lands. Strategic management of total grazing pressures on valuable habitats should consider non-lethal management actions (e.g. fencing) in the first instance. Where these actions are considered ineffective or not feasible, culling may need to be implemented, where this remains the only practicable method of management (DEW 2024). Prompt removal and exclusion of 'wild sheep' from coastal reserves when incursions happen and ensure stock fencing is maintained.

Targeted interventions for threatened/rare plant species and communities, including weed control and reintroductions and translocations of rare plants and orchids. Engagement and collaboration with private land owners of high value remnant vegetation communities, and opportunities for increased protection from stock, weed incursion and potential future development.

Implement appropriate management regimes to restore long term ecological function and biodiversity, including for rare and threatened species that inhabit the ecological communities within the cell. Improving knowledge of fauna and flora through increased monitoring, mapping and reporting to better inform conservation management.



*Glossy Black Cockatoo (Calyptorhynchus lathamii) (M Stokes)*

Large areas of coastal cliff lines and slopes in the adjacent cell F18 on the western boundary of Deep Creek NP have been re-planted and fenced to re-instate the habitat of the Glossy Black Cockatoo (*Calyptorhynchus lathamii*) (EPBC listed). There have been recent (2023) sightings of a Glossy Black Cockatoo in Deep Creek National Park, with birds likely coming across from the Dudley Peninsula population on Kangaroo Island. Connectivity of habitat restoration work throughout this cell and current habitat to the National Park needs to be considered. Continue to collaborate with land managers on Kangaroo Island and the mainland to protect and improve habitats through restoration programs and sightings.

Maintain and expand coastal restoration actions, including revegetation with local native plants and priority weed control particularly for butterfly populations Black and White Sedge-skipper (*Antipodia atralba*) by planting Black Grass Saw-sedge (*Gahnia lanigera*), Bitter-Bush Blue (*Theclinesstes albocinctus*) by planting Coast bitter-bush (*Adriana quadripartita*) and common species. Increase suitable habitat for coastal butterfly populations, including planting of host plants in coastal areas to increase habitat suitability for local introductions.



*Black and White Sedge-skipper (Antipodia atralba) is known within this cell. (M Endacott)*

Three Azure (*Ogyris*) butterfly species – *O. olane*, *O. genoveva* and *O. amaryllis meridionalis* – require *Amyema* spp. (mistletoes) as their larval hosts, without which they would not be able to exist. Stolarski (2024) recommended mistletoes should be retained in the environment and, where possible, additional seeding of mistletoes to be undertaken across cells to enhance localised Azure populations.

Continue to support collaborative efforts to protect and conserve Hooded Plover breeding habitats within this cell. Implement actions to support Hooded Plover conservation, including signage and compliance at Lands End beach which is a dog free beach under District Council of Yankalilla by-laws. Opportunities for collaboration to manage foxes within the cell to support Hooded Plover populations and outcomes for lambing on private properties. There are opportunities to support Hooded Plover habitat by replacing introduced Sea Wheat-grass with native Spinifex vegetation associations.

This cell is important for coastal raptor populations and ongoing monitoring, and management is critical to minimise disturbance, support and protection from emerging threats, particularly to breeding habitats (DEW 2022, Rowe et al 2018). Monitor, maintain and improve the quality of potential nesting areas and vegetation for the provision of wildlife habitat for priority species. The nearshore waters are important for marine mammals, including movement by mother and calf Southern Right Whales.

As part of the *Coastal Dune and Cliff-top Vegetation Surveys* (1995–1997) conducted by Opperman (1999), long-term monitoring sites were established across South Australia and the Southern Fleurieu region to assess the structure and composition of coastal dune and cliff-top plant communities, and their relationships to regional and environmental factors. Given that nearly 30 years have passed since these surveys were undertaken, there is strong potential for shifts in geographical range and changes in species composition due to the long-term impacts of climate change. The *Survey of Remnant Vegetation of the Southern Fleurieu Peninsula* involved biological surveys conducted between 1987 and 1991 to establish baseline data on remnant vegetation and swamps in the region south of Adelaide, South Australia.

During the development of this plan, and through the assessment of flora and fauna (both native and introduced) species lists available via the Biological Database of South Australia (BDBSA), significant gaps were identified between recorded species and known species distributions within cells. To address these data deficiencies and improve the accuracy of long-term ecological records, both above foundational vegetation survey projects should be repeated and incorporated into an ongoing monitoring program. Fauna assessments across cells to establish population baselines, update existing records and species distribution, particularly of underrepresented groups (reptiles and invertebrates) should be undertaken.



*White-bellied Sea Eagle (Haliaeetus leucogaster) and other coastal raptors have been recorded in this cell (D Westmoreland)*

There is opportunity for collaboration between partners, such as National Parks, Marine Parks, First Nations, landscape boards, volunteer groups (Friends of Parks and Friends of Heysen Trail), community and nature-based tourism operators, for monitoring of seabirds, coastal raptors, marine mammals and other wildlife.

Caton *et al* (2007) identified the coastal dunes and slopes from Deep Creek National Park to Morgans Beach as a high priority area worthy of an increased level of protection, due to large remnant blocks and improved areas such as the revegetation at Fishery Beach. It is also recognised that within the same stretch of coast, strategic actions to improve connection between vegetation blocks would greatly enhance the value of the area. Review of existing biodiversity plans (Durant 2009, Greening Australia 2007) following substantial work in the past decade by land managers and coastal community groups is warranted. Consideration of a biodiversity action plan across areas from Morgans Beach to western boundary of Deep Creek National Park, and connectivity with high value conservation areas inland. Consider best mechanisms for greater long-term conservation status and protection of this area (conservation outcomes and ongoing ability to access current funding and resources) and connectivity with Deep Creek National Park.

Maintaining and enhancing the integrity of remaining habitats within the cell and, where possible, linking this to habitat on adjoining private land and the National Park is important in ensuring the long-term viability of the cells' biological values. Opportunities to connect areas of high conservation in this cell, through the acquisition of neighbouring land parcels, should be considered when they arise, in addition to establishing agreements with landholders to support the restoration of target species by management of remnant habitats on their properties. Fishery Creek provides a riparian corridor eastward toward the hills and up to Talisker Conservation Park. At present, all of these linkages are discontinuous and incorporate areas of degraded vegetation, but there is potential to develop these links in the medium to long-term (Durant 2009).

A review of fire regimes and ecological/cultural burns is currently being undertaken for this cell as part of the South-western Fleurieu Peninsula Fire Management Plan (DEH 2009). Consider prescribed burning as a suitable management approach, with the aim of preserving the conservation value of the heath habitats for threatened species.

Support community volunteer efforts to undertake priority restoration and conservation work in this cell. Strengthen partnerships with First Nations, lessees, adjoining landowners, volunteer organisations, researchers, and the wider community to foster collaboration and long-term management benefits for biodiversity protection and restoration. Continuing to develop and maintain good relationships with privately owned land neighbours.

Collaborate with the SA Climate Ready Coasts program to enhance, resource, and implement coastal management initiatives and accelerate coastal hazard adaptation planning across South Australia. This program supports the

development and delivery of Coastal Hazard Adaptation Plans (CHAPs), led by the Local Government Association (LGA) of South Australia in partnership with the SA Coast Protection Board, the Department for Environment and Water, the Adelaide Coastal Councils Network, and the SA Coastal Councils Alliance.

### **Estuary (Fishery Creek)**

Weed control within the estuary and across grazing pastures, bare coastal slopes on private property and crown lands parcels needs to be maintained to prevent further incursion into limited remnant patches of high conservation value. Upgrades, replacement and installation of appropriate fencing to restrict stock access to cliff lines, estuary and the beach. Following weed control undertake activities to improve bank stabilisation and revegetation to reduce further erosion and weed cover.

Maintenance of natural conditions in creeks and estuaries depends on integrated catchment management. Land use that minimises the negative impacts to the stream, including limited water extraction, the reestablishment of native vegetation following priority weed control, and exclusion of stock from creek lines, should be encouraged within the cell and throughout the catchment.

### **Nearshore habitats**

Biological surveys of the seagrass and sand habitats are required to better understand habitat values and compile meaningful species lists for the cell.

Subtidal surveys to determine the species composition of seagrass habitats are required (Bryars 2013).

## **Climate change threats to coastal biodiversity (see BMT 2025)**

### **Potential climate change threats to coastal biodiversity**

Cell F19 includes coastal cliffs and slopes that support native vegetation, particularly around the creek and estuary. Rocky reef platforms inshore, as well as a mixed sand and reef habitat seaward of the platform, also makes up this cell. These reefs and intertidal zones support a number of temperate flora and fauna.

Biodiversity assets potentially vulnerable to climate change in this cell include:

- Native dune vegetation
- Creek and estuary ecosystems
- Intertidal and reef ecosystems
- Beach habitat
- Coastal cliffs

These ecosystems may be particularly vulnerable to the direct impacts of climate change, particularly sea level rise, coastal erosion, increased drought, higher temperatures and more intense storms.

Over time, increasing aridity will slow natural recovery from damage to remnant vegetation. Seasonal run-off in small creeks will be drastically reduced by soil water budget changes. However, unpredictable intense rainstorms will locally cause fast run-off in small catchments. Changes in wave climate, likely to increase the long period swell component, would accentuate high tide changes to backshores in pocket beaches (Caton et al 2007).

Marine heatwaves place further stress temperate reefs and seagrasses, reducing biodiversity. Higher atmospheric temperatures will lead to increased marine heatwaves, loss of species in the intertidal with longer than experience to grow back due to increased stressors; e.g. loss of sediment. Higher sea surface temperatures increase the potential for algal blooms.

Changes in ocean temperatures, salinity, and acidity (from increased CO<sub>2</sub> levels) can directly affect the health of temperate reefs. Warmer waters and increased acidification may hinder the growth of calcareous organisms, such as marine molluscs and phytoplankton. Tide and water depth dependent habitats on reefs will be impacted by sea level rise (Caton et al 2007).

This cell is resilient to some effects of climate change, but plant and animal survival of the displacement of climate zones is a serious threat. Increasing plant and animal resilience to progressive climate change is important for this area and can be assisted by improving connectivity between remnant vegetation patches (Caton et al 2007).

## Cell Action Table

Component	Issue	Proposed Action	Priority	Key Players	
Whole cell	Threats and opportunities to improve protection of cultural heritage within cell.	Cultural consultation and collaboration to appropriately manage cultural heritage within this area.  Prevent damage, disturbance, or interference to cultural heritage by adhering to the Aboriginal Heritage Act 1988.	High (cons/ threat)	NAC, Council, NPWSSA, LHF, Coastal Community groups, Aboriginal Affairs and Reconciliation - Department of Premier and Cabinet	
	Increased visitation and recreational pressure on cliffs, dunes and viewing points due to increased visitation and promotion of Wild South Coast Way.	Assess increased visitation capacity at known sites, repair or upgrade fencing to restrict unauthorised access and review car parking capacity. Manage visitor numbers within sustainable limits in ecologically and culturally sensitive and significant areas - consult with First Nations groups.	High (cons/ threat)	NPWSSA, land managers, NAC, Friends of Heysen Trail, council	
		Investigate opportunities for community education and engagement regarding unique and valuable coastal landscape and fragile nature of coastal areas. Dedicated cultural education and training for land managers, agency staff and land stewards	High (Cons/ Soc)	Council, LHF, DEW, NPWSSA, NAC, coastal community groups, Community groups	
		Opportunity to work with nature-based tourism operators to increase education and stewardship of local coastal environments, ensuring that tourism is conducted in partnership with First Nations with cultural obligation.	Medium (Cons)	Council, land managers, NAC, NPWSSA, coastal community groups	
		Development of consistent signage and messaging for coastal values and compliance for conservation areas (public managed lands, coastal reserves) across the Fleurieu Peninsula coast. Co-design signage with First Nations/ knowledge holders.	Medium (Soc/ Cons)	Council, land managers, NAC, NPWSSA, coastal community groups	
		Collaborate and manage access with event managers to ensure protection of coastal areas and groups do not impact high conservation or cultural value areas and species.	High (threat)	NPWSSA, Council, NAC, Cape Jervis coastal community groups Friends of Heysen Trail	
		Monitor aquatic activities (boating, paddleboard and jet skis) for increased pressures on local coastal habitats and fauna species interactions.	High (threat)	NPWSSA, Council and land managers	
	Crown Coastal reserve and large public and private ownership of coastal cliff line between Kings Head and Cape Jervis.	Consider program with land owners for Landscape-scale conservation and connectivity (restore coastal cliff and heath communities).	Medium (cons)	DEW -NPWS & Crown lands, LHF, NAC, Land managers, Council, coastal community groups	
		Fence cliff line from incursion to prevent grazing and erosion on cliff lines and coastal slopes.	High (Cons/ Threat)	Land owners	
		Assessment of rare plants and remnant grass and coastal heath communities across coastal cliffs.	High (cons)	DEW, LHF, NPWSSA, Cape Jervis coastal community groups	
	Improve connectivity, strategic planning and protection of large, high value remnant vegetation blocks.	Develop a strategy to connect land and land management agreements to improve connectivity between remnant vegetation blocks.	High (Cons / threat)	DEW, CPB, LHF, NAC, Council, Community.	
		Investigate opportunities for formal conservation agreement/protection of high biodiversity conservation areas within cell.	High (cons)	CPB, DEW, NPWSSA, LHF, NAC, Council	
	Whole cell				

Component	Issue	Proposed Action	Priority	Key Players
Whole cell	Improve connectivity, strategic planning and protection of large, high value remnant vegetation blocks.	Maintain revegetation and restoration efforts across land parcels within cell and adjoining Glossy Black Cockatoo plantings. and increase biodiversity within the original plantings.	Medium (cons)	CPB, Council, LHF, NAC business/contractors/rangers, Cape Jervis coastal community groups
		Development of a Biodiversity Action Plan across areas from Morgans Beach to western boundary of Deep Creek National Park and connectivity with high value conservation areas inland.	High (cons/threat)	CPB, DEW, LHF, NAC, Council
	Protection of significant flora and fauna.	Protect existing populations through targeted weed control.	High (threat)	Council, NPWSSA, land managers, NAC business/contractors/rangers, LHF, coastal community groups
		Revegetation programs to improve the conservation prospects of threatened species.	High (cons/threat)	DEW, NPWSSA, land managers, NAC business/contractors/rangers, LHF, coastal community groups
		Propagate local plants for reintroduction to/ from other sites to maintain genetic diversity and increase source populations.	High (cons)	Council, NPWSSA, land managers, LHF, coastal community groups, NAC business/contractors/rangers, local coastal plant nurseries
		Consider controlled burning options as a management strategy improve vegetation structure and species composition. Ensure enough critical areas of habitat are maintained for existing populations.	Medium (threat/cons)	DEW, NPWSSA, NAC business/contractors/rangers, LHF
		Improving knowledge of fauna and flora through increased monitoring, mapping and reporting to better inform conservation management.	High (cons)	DEW, NPWSSA, land managers, NAC business/contractors/rangers, LHF, coastal community groups
		Threat to coastal fauna and flora from pest animals (rabbits, foxes and cats).	Coordinated collaboration between landowners and managers is required to manage pest animals.	High (threat)
	Report sightings of feral animals (deer, fox, rabbit, cat and declared species) through the feral scan pest animal recording and management tool		High (threat)	Land managers, community, coastal community groups
	Increasing grazing pressure from native and introduced species.	Coordinate with regional grazing pressure programs (Western Grey Kangaroos, Fallow Deer) to monitor populations and control as required to protect remnant vegetation and revegetation efforts.	High (threat)	NPWSSA, DEW, PIRSA, LHF
	Increased grazing pressure and damage to revegetation areas by 'wild Sheep'	Removal of 'wild Sheep' from within the cell and monitor for new incursions.	Medium (threat)	NPWSSA, Council, landowners
		Upgrades, replacement and installation of appropriate fencing to restrict stock access from neighbouring properties to Conservation Reserves, cliff lines, estuaries and the beach.	High (threat)	NPWSSA, DEW, Council, NAC business/contractors/rangers, landowners
	Council and Crown land parcel access is limited leading to increase in informal camping.	Monitor Crown reserves and Council car parks. Undertake compliance where required.	High (threat)	DEW, Council
		Increase public awareness of legal camping areas and responsible use.	Medium (threat)	Council, Crown lands, DEW

Component	Issue	Proposed Action	Priority	Key Players
Whole cell	Threat by Off Road Vehicle (ORV) use.	Monitor and undertake compliance for incursions on council and Crown land.	High (threat)	Council, DEW, Cape Jervis coastal community groups
		Maintain fencing and access points to ensure protection of high conservation areas.	High (threat)	Council, CPB, NAC business/ contractors/rangers, DEW
	Weed species threat to significant flora and fauna habitats.	Ongoing control and investment in weed control (particularly WONS and Red Alert Species) to protect and maintain high conservation areas including is difficult to access areas.	High (threat)	NPWSSA, land managers, NAC business/ contractors/rangers, Cape Jervis Coastal Community Group, Community groups, LHF
		Monitor new and existing incursions and roadside vegetation for weed incursion and spread of non-local Australian native species from older paddock plantings.	High (threat/ cons)	Council, LHF, Cape Jervis coastal community groups
		Targeted interventions for threatened/ rare plant species and communities.	High (cons)	DEW, NPWSSA, LHF, Cape Jervis coastal community groups
		Monitor changes to dunes through BushRAT or similar monitoring to measure condition assessment and change.	High (cons/ threat)	Council, DEW, NPWSSA, LHF, Community Groups.
	Ongoing weed incursions and weed control.	Target residences with educational materials, with regard to weeds.  Leverage funding opportunities based on previous investment and in-kind contributions from coastal community groups.	High (Threat/ Soc / Econ)	LHF, coastal community groups, and Council
	Butterfly habitats and host plant protection.	Identify locations of potential butterfly habitats and host plants within the cell.	High (cons)	DEW, NPWSSA, LHF, Cape Jervis coastal community groups
		Extension of existing habitats and reintroduction of locally extinct butterfly species (and their host plants)	Medium (cons)	DEW, CPB, NPWSSA, LHF, NAC business/ contractors/rangers, Cape Jervis coastal community groups
		Undertake weed management and enhance habitat for <i>Antipodia atralba</i> ( <i>Gahnia lanigera</i> ), <i>Theclinesthes albocinctus</i> ( <i>Adriana quadripartita</i> ) & common species.	Medium (cons)	CPB, Council, DEW, LHF, NAC business/ contractors/rangers, coastal community groups
		Retain and seed where possible mistletoe species ( <i>Amyema spp.</i> ) to support Azure ( <i>Ogyris spp.</i> ) butterfly populations.	High (cons)	DEW, CPB, NAC business/ contractors/rangers, LHF, coastal community groups, Council
	High value habitat for coastal raptors (White-bellied Sea Eagle and Eastern Osprey.)	Ongoing monitoring and management of high values nesting and foraging areas.	High (cons)	NPWSSA, DEW, coastal community groups, NAC business/ contractors/rangers,
		Implement the recovery plan for Eastern Osprey and White-bellied Sea Eagles (2022).	High (cons)	DEW, NPWSSA, LHF, NAC business/ contractors/rangers,
		Investigate opportunities for establishment of nesting towers on public/ private land for additional habitat	Medium (cons)	DEW, LHF, land owners, coastal community groups
	High value habitat for marine mammals, important migratory corridor for Southern Right and Humpback Whales.	Continue monitoring and management of migratory areas and compliance of impact causing activities.	High (cons)	DEW, NPWSSA, SA Whale Centre, NAC business/ contractors/rangers, Encounter Whales

Component	Issue	Proposed Action	Priority	Key Players
	Coordinated approach to monitoring of coastal wildlife.	Collaboration between land manager and stakeholders to support research and citizen science of beach-nesting birds, seabird, coastal raptors, marine mammals and other wildlife.	Medium (cons)	DEW, NPWSSA, BirdLife Australia, NAC, LHF, Council, SA Whale Centre, Encounter Whales, cctourism operators, Cape Jervis coastal community groups, Friends of Heysen trail.
		Increase awareness of need to monitor and report Glossy Black Cockatoos sightings.  Collaboration with Kangaroo Island land managers to monitor population movements and undertake restoration programs between the island and mainland potential habitats.	Medium (cons)	DEW, NPWSSA, LHF, KI Landscape Board, Council, NAC business/contractors/rangers, coastal community groups, general public
	Aged baseline data and significant gaps in recorded flora and fauna species across the Southern Fleurieu region.	Repeat and integrate historical vegetation surveys into a long-term monitoring program to update records and address data deficiencies.	Medium (cons/threat)	DEW, LHF, councils, coastal community groups
		Undertake fauna assessments across cells to establish baselines, update records and species distribution, particularly of underrepresented groups (reptiles and invertebrates).	Medium (cons/threat)	DEW, LHF, councils, coastal community groups
		Identify potential funding sources to repeat these long-term flora monitoring sites and fauna assessments.	High (cons/threat)	DEW, LHF, councils.
	Impacts of marine debris on coastal habitats and species.	Continue long term bioregional monitoring of marine debris at priority sites.	High (threat)	Landscape Boards, coastal community groups, NAC business/contractors/rangers, Council
		Foster community-based debris clean-up activities.		
	Increases stewardship and support for coastal values and habitats.	Facilitate opportunities for community participation in management activities for long-term stewardship of the parks, reserves, private land and coastal habitats.	Medium (Cons)	NPWSSA, DEW, LHF, Council, NAC business/contractors/rangers, coastal community groups
	Multiple land owners/managers, community groups and volunteers across coastal areas.	Facilitate opportunities for increased coordination and sharing of skills and information between land owners/managers, community groups and volunteers to support landscape scale approach to coastal conservation and management.	High (cons)	Council, land managers, NAC, land owners, LHF, coastal community groups
	Support and acknowledgement of extensive volunteer effort in cell.	Maintain and support volunteer effort across public and private land parcels.	High (cons)	DEW, CPB, LHF, Friends of Parks, Friends of Heysen Trail
Physical changes on the coast and natural assets from sea level rise (such as coastal squeeze on tidal habitats, erosion, vegetation loss, marine turbidity and light reduction)	Development of a council wide Coastal Hazard Adaptation Plan, including key locations, recommendations and priorities for funding.  Support partnerships for ongoing investigation and monitoring in the coastal zone, working with the Coast Protection Board to identify adaptation options for the future.	High (Cons. Threat)	CPB, Council, community, university and research agencies, Climate Ready Coasts Program	
Fishery Creek Estuary	Areas of remnant vegetation adjacent to Fishery Beach has significant biodiversity value.	Areas of vegetation within the estuary needs recognition through proactive management: assess opportunities to establish buffers from weed invasion, reduce erosion and sediment loads upstream through revegetation.	High (Threat)	Landowners, DEW, CPB, LHF, NAC business/contractors/rangers.
	Weed incursion within estuary reducing biodiversity values.	Active control of weed populations within estuary areas.	High (Threat)	Landowners, managers, DEW, NAC business/contractors/rangers, CPB, LHF,
	Protection of European heritage site at Fishery Creek	Protection of European heritage values and archaeological significance at the former Cape Jervis Whaling Station heritage site.	High (Soc./Threat)	DEW, CPB, Coastal community groups
	Stock grazing to small creeks leading to erosion, bank instability and reduced water quality.	Maintain and improve fencing of estuaries and riparian land against stock.	High (Threat)	Landowners, CPB, NAC business/contractors/rangers, DEW, LHF

Component	Issue	Proposed Action	Priority	Key Players
Fishery Creek Estuary	Limited monitoring data of estuary flow and opening and closing durations exist for these estuaries.	Monitoring of estuaries to determine the connectivity and functionality with marine ecosystems.	High (cons)	CPB, Landscape Boards, DEW
	Impact of reduced flow and reduced water quality to aquatic biodiversity values.	Review opportunities to measure and increase environmental flow opportunities through Water Allocation Planning (WAP), low flow bypass on farm dams and other local opportunities.	High (cons/ threat)	DEW, LHF, land owners.
Riparian slopes, adjacent to Fishery Creek	Creation of biodiversity corridor; improvement in creek water quality; exclusion of stock from creekline.	Extension of riparian planting and fencing program adjacent to Fishery Creek.	High (Cons / threat)	CPB, LHF, NAC business/ contractors/rangers, Cape Jervis coastal community groups
Coastal slopes within reserves, Crown and CPB land Coastal slopes within reserves, Crown and CPB land	Presence of a high-profile walking track (Wild South Coast Way on the Heysen Trail) through a high conservation priority area.	Ensure high level of track maintenance and marking to reduce erosion and off-track damage.	High (Cons / threat)	CPB, DEW Friends of the Heysen Trail, NAC business/ contractors/rangers.
	Improved habitat of Glossy Black Cockatoo planted areas	Continue revegetation of <i>Allocasuarina</i> coastal woodlands including increased understorey species to existing revegetation areas to improve habitat values.	Medium (cons)	DEW, LHF, land managers, NAC business/ contractors/rangers, community groups
	Improve connectivity, strategic planning and protection of large, high value remnant vegetation blocks.	Development of a biodiversity action plan across areas from Morgans Beach to western boundary of Deep Creek National Park and connectivity with high value conservation areas inland.	High (Cons/ threat)	CPB, DEW, LHF, Council, NAC business/ contractors/rangers, coastal community groups
		Investigate opportunities for formal conservation agreement/protection of high biodiversity conservation areas within cell and connectivity with Deep Creek National Park.	Medium (cons)	CPB, DEW, NPWSSA, LHF, NAC business/ contractors/rangers, Council
Beach-nesting birds	Hooded Plover nests in season threatened by disturbance by walkers and dogs.	Community monitoring, fences to mark nests. Signage and awareness raising activities to alert dog walkers.	High (Cons / threat)	Council, BirdLife Australia, LHF, NAC business/ contractors/rangers, Friends of the Hooded Plover, Fleurieu Peninsula volunteers, coastal community groups, Oystercatcher monitoring volunteers
	Limited community knowledge of local conservation values and threats.	Provide education opportunities to raise awareness and protection of beach-nesting birds, such as Hooded Plovers and Sooty Oystercatchers (dogs on leads, nesting sites, citizen science projects, managing visitor and vehicle patrol disturbance).	High (threat)	Council, BirdLife Australia, LHF, Friends of the Hooded Plover, NAC business/ contractors/rangers, Fleurieu Peninsula volunteers, coastal community groups, Friends of Heysen Trail, Oystercatcher monitoring volunteers
	Protection of natural assets of high conservation values.	Support the introduction, implementation and compliance of Council by-laws related to dogs on lead in estuaries and high value areas.	High (threat)	Council, land owners, community, coastal community groups.
	Incursion of multiple dune grass weed species is limiting suitable habitat for beach-nesting birds.	Support the staged removal of introduced weedy grasses and restoration of spinifex dunes.	High (cons/ threat)	Council, land managers, LHF, NAC business/ contractors/rangers, coastal community groups, Friends of the Hooded Plover, Fleurieu Peninsula volunteers
		Incursion of multiple dune grass weed species is limiting suitable habitat for beach-nesting birds.	Increase community awareness of habitat needs for beach-nesting bird species.	Medium (threat)

Component	Issue	Proposed Action	Priority	Key Players
Nearshore habitats (Reef, Seagrass)	Sediments and nutrients from cliff top erosion and small creeks.	Support initiatives for catchment revegetation and improved land management practices.	Medium (threat/cons)	Council, LHF
		Monitor catchment and stormwater impact on nearshore habitats and reefs across the cell.	High (Threat)	Council, DEW, EPA, SA Water, Landscape Boards
	Lack of knowledge of seagrass condition and species diversity in cell.	Collaboration between government agencies, researchers, and community to monitor seagrass cover, species diversity, condition and inform active management.	Medium cons/(threat)	DEW, SARDI, EPA, SA Water, LHF, NPWSSA, universities, Council, community
		Investigate opportunities to support reduction of land based impacts to avoid further loss, promote natural recovery of seagrasses and investigate potential for assisted restoration of seagrass habitats with community	High (cons/threat)	DEW, LHF, SARDI, NPWSSA, Council
Climate (Cliffs)	More intense rainfall events likely to increase soil erosion.	Restoration of native plant species to assist soil stabilisation.	High (Cons/threat)	DEW, landowners, coastal community groups, NAC business/contractors/rangers, NPWSSA, LHF
	Increased aridity likely to make growing conditions less suitable to native vegetation fragments.	Restoration of native plant species to assist soil stabilisation.	High (Cons/threat)	DEW, land owners, NPWSSA, NAC business/contractors/rangers, coastal community groups, LHF
	Increased sea levels contribute to more frequent and intense wave action, which accelerates cliff erosion.	Restoration of native plant species to assist soil stabilisation.	Medium (threat)	DEW, NPWSSA, land owners, coastal community groups, NAC business/contractors/rangers, LHF
Climate (Creek/ Estuary)	More intense rainfall events likely to lead to increased pollutants, nutrients and sediments washed into the estuary especially during first flush from the landward end.	Monitor stormwater quality and estuary condition.	Medium (threat)	NPWSSA, DEW, LHF, landowners
	Higher temperatures likely to lead to increased algal blooms with impacts on estuarine fauna.	Monitor stormwater quality and estuary condition.	Medium (threat)	NPWSSA, DEW, LHF, landowners
Climate (Beach and dunes)	Increased sea levels and more intense storms and higher winds can contribute to more frequent and intense wave action, which accelerates beach and dune erosion.  Predicted increases in aridity can lead to reduced vegetation cover and increased dune drift and dune mobility.	Restrict public access to fragile dunes.	Medium (threat)	DEW, NPWSSA, Council, NAC business/contractors/rangers, coastal community groups, LHF
		Implement restoration of native plant species.	Medium (threat)	DEW, NPWSSA, Council, NAC business/contractors/rangers, coastal community groups, LHF
		Monitoring of cross-shore dune, beach and nearshore sand level profiles.	Low (Hazard) Medium (cons/threat)	DEW CPB, Research Institutions, Universities.
		Update DEW Coastal Hazard Mapping spatial layer identifying the change in extent and stability of coastal dunes across South Australia since the previous hazard mapping was undertaken approximately 20 years ago	Medium (hazard) Medium (cons/threat)	DEW, CPB, Research Institutes, Universities
		Beach and dune topographic and photogrammetry drone surveys to provide detailed 2D and 3D digital surface models for monitoring changes to the coastal landforms over time in response to climate change.	Medium (Hazard) Medium (cons/threat)	DEW CPB, Research Institutions, Universities.
		Support cultural monitoring and communications to protect significant known heritage sites	High (threat)	NAC, First nations business/contractors/ rangers, Council, DEW, LHF, coastal community groups

Component	Issue	Proposed Action	Priority	Key Players
Climate (Macroalgal reefs and seagrasses)	More intense rainfall events are likely to lead to increased pollutants, nutrients and suspended sediments washed into coastal waters especially during first flush.	Monitor stormwater quality.	Medium (threat)	NPWSSA, DEW, LHF
	Increased storm surge can cause dislodgment of algae and seagrasses.	Monitor stormwater quality.	Medium (threat)	NPWSSA, DEW, LHF
	Higher temperatures can lead to increased incidence and persistence of marine heatwaves and increased stress on temperate reefs and seagrasses, reducing biodiversity.	Monitor stormwater quality.	Medium (threat)	NPWSSA, DEW, LHF
	Ocean acidification can impact the life history of marine species.	Monitor stormwater quality.	Medium (threat)	NPWSSA, DEW, LHF
Undertake benthic flora mapping to determine areas or opportunities for restoration.		Medium (threat)	DEW, NPWSSA, LHF	
Climate (Whole cell)	Coastal Hazard Adaptation Planning	Investigate future funding opportunities to undertake coastal adaptation plan for DC Yankalilla to improve understanding of coastal risk, to inform coastal hazard adaptation planning and for evidence-based decisions and investments in the coast.	Medium (threat)	Council, CPB, Climate Ready Coasts Program, LGA, SACCA, DEW, consultancies, research institutions

## Relevant management plans

- Durant, M.M. (2009) *Lands End Site Conservation Plan (1st Iteration)*, Greening Australia, South Australia, Prepared for the Adelaide and Mount Lofty Ranges Natural Resources Management Board.
- Fishery Beach Native vegetation rehabilitation and restoration plan (2007) Prepared by Greening Australia SA Ltd for the Adelaide and Mount Lofty Ranges Natural Resources Management Board
- Encounter Marine Park Management Plan (2012, amended 2020). Department for Environment and Water.
- Caton B. Fotheringham D. Lock C. Royal M, Sandercock R. Taylor R. (2007). Southern Fleurieu Coastal Action Plan and Conservation Priority Study. Prepared for Adelaide and Mount Lofty NRM Board, Alexandrina Council, City of Victor Harbor, District Council of Yankalilla, Goolwa to Wellington Local Action Plan and Department for Environment and Heritage.
- Landscapes Hills and Fleurieu (2024) Hills and Fleurieu Regional Pest Plant and Animal Strategy 2024 - 2029.
- Ngarrindjeri Nation (2007) Ngarrindjeri Nation Yarlular-Ruwe Plan. Caring for Ngarrindjeri Sea Country and Culture. (Ngarrindjeri Tendi, Ngarrindjeri Heritage Committee and Ngarrindjeri Native Title Management Committee, Ngarrindjeri Land and Progress Association, Meningie).
- Ngarrindjeri and Others Native Title Claim (Part A) settlement Indigenous Land Use Agreement (ILUA) (2017) Government of SA Attorney General's Department
- Kungun Ngarrindjeri Yunnan Agreement (2009) between South Australian Government and the Ngarrindjeri Regional Authority (NRA).
- Maguire, G. S. (2008). A practical guide to managing beach-nesting birds in Australia. Birds Australia, Melbourne, Australia.
- Resource Condition Assessment Southern Fleurieu Estuaries (2014), Prepared by Telfer, S. and Milne, T. (ecological evaluation Pty Ltd) for Adelaide and Mount Lofty Ranges Natural Resources Management Board.
- Department for Environment and Heritage (2009) Reserves of the South-western Fleurieu Peninsula Fire Management Plan, Adelaide, South Australia' (currently in review)
- District Council of Yankalilla Community Land Management Plan 2019
- Stolarski A., (2024) Southern Fleurieu Peninsula coastal butterfly species assessment, A revision of the Butterfly Section of the Southern Fleurieu Coastal Action Plan and Conservation Priority Study 2007.
- BMT (2025), Climate Change Threats to Coastal Biodiversity in the Southern Fleurieu Region. Report prepared for Hills and Fleurieu Landscape Board as part of the review of the Southern Fleurieu Coastal Action Plan and Conservation Priority study (2007). BMT, Adelaide.
- South Australian Recovery Plan for Eastern Osprey and White-bellied Sea Eagle (2022) Department for Environment and Water

## References

- Baker, J.L. and Gurgel, C.F.D. (2010) Biodiversity and conservation of macroalgae in the Adelaide and Mt Lofty Ranges NRM region including an assessment of biodiversity and distribution of macroalgae in the Gulf St Vincent bioregion. Report to the Adelaide and Mount Lofty Ranges Natural Resources Management Board. J.L. Baker (Marine Ecologist) and School of Earth and Environmental Sciences, University of Adelaide.
- Baker, J., Shepherd, S., Brown, A., Crawford, H. and Muirhead, D. (2008) Uncommon and cryptic reef fishes: Results of pilot surveys along Fleurieu Peninsula. Report for Adelaide and Mount Lofty Ranges Natural Resources Management Board, 2008.
- Baker, J., Crawford, H., Muirhead, D., Shepherd, S., Brook, J., Brown, A., and Hall, C. (2009) Uncommon, cryptic and site-associated reef fishes: Results of surveys along Fleurieu Peninsula and in Encounter Bay, 2009. Report for Adelaide and Mount Lofty Ranges Natural Resources Management Board, August 2009.
- Baring, R.J., Stewart, T.D.C., and Benkendorff, K. (2010) Adelaide desalination plant final intertidal monitoring report 2009/2010. School of Biological Sciences, Flinders University.
- Benkendorff, K., Fairweather, P. and Dittmann, S. (2008) Intertidal shores: life on the edge. In: S.A. Shepherd, S. Bryars, I. Kirkegaard, P. Harbison, and J.T. Jennings (eds.) 'Natural History of Gulf St Vincent'. pp 121–131.
- BMT (2025), Climate Change Threats to Coastal Biodiversity in the Southern Fleurieu Region. Report prepared for Hills and Fleurieu Landscape Board as part of the review of the Southern Fleurieu Coastal Action Plan and Conservation Priority study (2007). BMT, Adelaide.
- Brock D., Brook J., Mellin C., Peters K., Bryars S., Hicks J., Miller D., Easton D. and Meakin, C. (2023). Green Adelaide Rocky Reef Program: Trends in the condition of rocky reef ecosystems of the greater Adelaide and Fleurieu Peninsula region, South Australia. DEW Technical report 2023/79, Government of South Australia, Department for Environment and Water, Adelaide
- Brook J, Peters K, Bryars S, Owen S, Hicks J, Miller D, Easton D, Eglington Y, Meakin C and Brock D (2020). Subtidal Reef Health Program: Baseline status of subtidal reefs and associated biodiversity patterns in the AMLR region. DEW Technical report DEW-TR-2020-01.
- Bryars, S. (2003) An Inventory of Important Coastal Fisheries Habitats in South Australia. Fish Habitat Program, (Primary Industries and Resources South Australia: Adelaide).
- Bryars, S. (2013) Nearshore marine habitats of the Adelaide and Mount Lofty Ranges NRM region: values, threats and actions. Report to the Adelaide and Mount Lofty Ranges Natural Resources Management Board, Dr Simon Richard Bryars, Adelaide.
- Caton, B., Fotheringham, D., Lock C., Royal, M., Sandercock, R., Taylor, R., 2007. *Southern Fleurieu coastal action plan and conservation priority study*, prepared for Adelaide & Mount Lofty Ranges Natural Resources Management Board, Alexandrina Council, City of Victor Harbor, District Council of Yankalilla, Goolwa to Wellington Local Action Plan and Department for Environment & Heritage.
- Dennis, T. E. (2006). Status and distribution of the Wedge-tailed Eagle on the Fleurieu Peninsula, South Australia in 2005. *South Australian Ornithologist* 35: 38-46.
- Department for Environment and Heritage (2007) Adelaide and Mount Lofty Ranges Natural Resources Management Region Estuaries Information Package. Department for Environment and Heritage, Adelaide.
- Department for Environment and Heritage (2008). Marine Habitats in the Adelaide and Mount Lofty Ranges NRM Region. Final Report to the Adelaide and Mount Lofty Ranges Natural Resources Management Board for the program: Facilitate Coast, Marine and Estuarine Planning and Management by Establishing Regional Baselines. Prepared by the Department for Environment and Heritage, Coast and Marine Conservation Branch.
- Department for Environment and Heritage (2009) Reserves of the South-western Fleurieu Peninsula Fire Management Plan, Adelaide, South Australia'
- Department for Environment and Water (2022). South Australian Recovery Plan for Eastern Osprey and White-bellied Sea Eagle

- Department for Environment and Water (2024). Deep Creek National Park, Talisker Conservation Park and small parks of the Southern Fleurieu Peninsula Draft Management Plan Department of Environment, Water and Natural Resources (2012). *Encounter Marine Park Management Plan 2012*. Adelaide, South Australia.
- Durant, M.M. (2009) *Lands End Site Conservation Plan (1st Iteration)*, Greening Australia, South Australia, Produced for the Adelaide and Mount Lofty Ranges Natural Resources Management Board
- Greening Australia (2007) Fishery Beach Native vegetation rehabilitation and restoration plan Prepared for the Adelaide and Mount Lofty Ranges Natural Resources Management Board
- Opperman, A., 1999, A Biological Survey of the South Australian Coastal Dune and Clifftop Vegetation, Environment Protection Agency, Department for Environment, Heritage and Aboriginal Affairs, Adelaide.
- Peters, K, J. and Flaherty, A (2013). Current impacts and threat abatement of marine debris within Gulf St Vincent: Re-assessment 2 years after preliminary monitoring. Final report to the Commonwealth Government of Australia (Commonwealth identification No: OC13-00496). Adelaide and Mount Lofty Ranges Natural Resources Management Board. Adelaide. 60 pp
- PIRSA. (2014). Ecological Assessment of the South Australian Beach-Cast Seagrass and Marine Algae Fishery. Assessment report prepared for the Department of the Environment for the purposes of part 13 and 13(a) of the Environment and Protection and Biodiversity Conservation Act 1999.
- Rowe, E., Brinsley, R., and Dennis, T. (2018) A review of Wedge-tailed Eagle population stability in the Fleurieu Peninsula region of South Australia in 2017. *South Australian Ornithologist* 43: 27- 37.
- Shepherd, S.A. and Baker, J.L. (2008) Reef fishes of lower Gulf St Vincent. In: S.A. Shepherd, S. Bryars, I. Kirkegaard, P. Harbison, and J.T. Jennings (eds.) 'Natural History of Gulf St Vincent'. pp 297–316.
- Short, A.D. (2001) *Beaches of the South Australian Coast and Kangaroo Island: A guide to their nature, characteristics, surf and safety*. Australian Beach Safety and Management Program, Sydney.
- Stolarski A., (2024) Southern Fleurieu Peninsula coastal butterfly species assessment, A revision of the Butterfly Section of the Southern Fleurieu Coastal Action Plan and Conservation Priority Study 2007.
- Telfer, S. and Milne, T. (2014) Resource Condition Assessment Southern Fleurieu Estuaries, Prepared by Ecological evaluation Pty Ltd for Adelaide and Mount Lofty Ranges Natural Resources Management Board.
- Turner D., Kildea T. & Westphalen G. (2007). Examining the health of subtidal reef environments in SA. 2. Status of selected reefs based on the results of the 2005 surveys. SARDI Publication No. RD 03/0252-6. SARDI, Adelaide.

## Cell Biota (Flora and Fauna)

Lists provided are specific to this cell from Biological Database of South Australia (BDBSA), technical updates, review of publications and local input. Conservation ratings (National, State and Sub regional) are included for flora and fauna.

Note: Restricted species as per Department for Environment and Water (DEW) specifications have been omitted from the tables due to the size of cells and requirement for 10km<sup>2</sup> buffering of data. However, records are included in the total species numbers per cell. Please contact DEW directly for restricted data requests.

### FLORA Summary

<b>Vegetation Block Metrics</b>	Fishery Beach Coastal Reserve (CPB) Lands End Coastal Reserve (CPB) Crown Lands Coastal Reserve (DEW)			
<b>Terrestrial Habitat Description/s</b>	See Terrestrial biodiversity vegetation communities in cell description.			
<b># Flora in cell</b>	322			
<b># Native Flora in cell</b>	207			
<b># Introduced Flora in cell</b>	115			
<b># Conservation Rated Flora in cell</b>	8 (0 national, 5 state)			
<b># Threatened Ecological Communities (EPBC Act)</b>	nil			
<b>Conservation Rated Flora</b>	<b>Species</b>	<b>Common Name</b>	<b>EPBC Act Status</b>	<b>NPW Status</b>
	<i>Austrostipa echinata</i>	Spiny Spear-grass		R
	<i>Caladenia bicallata</i> ssp. <i>bicallata</i> <sup>^</sup>	Western Daddy-long-legs		R
	<i>Cyperus flaccidus</i>	Flaccid Flat-sedge		R
	<i>Drosera praefolia</i>	Early Sundew		R
	<i>Hibbertia cinerea</i>	Port Lincoln Guinea-flower		R
	<i>Orobanche cernua</i> var. <i>australiana</i> <sup>^</sup>	Australian Broomrape		R
	<i>Wurmbea latifolia</i> ssp. <i>vanessae</i>	Broad-leaf Nancy		R
	<i>Xanthorrhoea semiplana</i> ssp. <i>tateana</i>	Tate's Grass-tree		R

## All Native Flora in cell

Species	Common Name	EPBC Status	NPW Act Status	Subregional Status*
<i>Acacia cupularis</i>	Cup Wattle			RA
<i>Acacia dodonaeifolia</i> X <i>Acacia paradoxa</i>				
<i>Acacia ligulata</i>	Umbrella Bush			RA
<i>Acacia longifolia</i> ssp. <i>sophorae</i>	Coastal Wattle			LC
<i>Acacia paradoxa</i>	Kangaroo Thorn			LC
<i>Acacia pycnantha</i>	Golden Wattle			LC
<i>Acacia spinescens</i>	Spiny Wattle			LC
<i>Acaena echinata</i>	Sheep's Burr			LC
<i>Acaena novae-zelandiae</i>	Biddy-biddy			LC
<i>Acrotriche cordata</i>	Blunt-leaf Ground-berry			RA
<i>Acrotriche patula</i>	Prickly Ground-berry			RA
<i>Actites megalocarpus</i>	Coast Sow-thistle			NT
<i>Adriana quadripartita</i>	Coast Bitter-bush			NT
<i>Allocasuarina muelleriana</i> ssp. <i>muelleriana</i> <sup>^</sup>	Common Oak-bush			LC
<i>Allocasuarina verticillata</i>	Drooping Sheoak			LC
<i>Apium prostratum</i> var.	Native Celery			
<i>Apium prostratum</i> var. <i>filiforme</i>	Native Celery			LC
<i>Apium prostratum</i> var. <i>prostratum</i>	Native Celery			LC
<i>Arthropodium strictum</i>	Common Vanilla-lily			LC
<i>Atriplex cinerea</i>	Coast Saltbush			LC
<i>Austrostipa acroclliata</i>	Graceful Spear-grass			RA
<i>Austrostipa curticoma</i>	Short-crest Spear-grass			LC
<i>Austrostipa echinata</i>	Spiny Spear-grass		R	VU
<i>Austrostipa elegantissima</i>	Feather Spear-grass			LC
<i>Austrostipa eremophila</i> <sup>^</sup>	Rusty Spear-grass			LC
<i>Austrostipa flavescens</i>	Coast Spear-grass			LC
<i>Austrostipa mundula</i>	Neat Spear-grass			RA
<i>Austrostipa nitida</i>	Balcarra Spear-grass			NT
<i>Austrostipa nodosa</i>	Tall Spear-grass			LC
<i>Austrostipa puberula</i>	Fine-hairy Spear-grass			RA
<i>Austrostipa scabra</i> ssp. <i>falcata</i>	Slender Spear-grass			LC
<i>Boronia coerulescens</i> ssp. <i>coerulescens</i>	Blue Boronia			LC
<i>Brachyscome cuneifolia</i> <sup>^</sup>	Wedge-leaf Daisy			RA
<i>Brachyscome lineariloba</i>	Hard-head Daisy			NT
<i>Bursaria spinosa</i> ssp. <i>spinosa</i>	Sweet Bursaria			LC
<i>Caesia calliantha</i>	Blue Grass-lily			LC
<i>Caladenia bicalliata</i> ssp. <i>bicalliata</i> <sup>^</sup>	Western Daddy-long-legs		R	EN
<i>Caladenia latifolia</i>	Pink Caladenia			NT
<i>Calandrinia calyptrata</i>	Pink Purslane			NT
<i>Calandrinia granulifera</i>	Pigmy Purslane			NT
<i>Calytrix tetragona</i>	Common Fringe-myrtle			LC
<i>Carex bichenoviana</i>	Notched Sedge			RA
<i>Cassytha glabella</i> f. <i>dispar</i>	Slender Dodder-laurel			LC
<i>Centrolepis polygyna</i>	Wiry Centrolepis			NT
<i>Cheilanthes austrotenuifolia</i>	Annual Rock-fern			LC
<i>Clematis microphylla</i>	Old Man's Beard			

<b>Species</b>	<b>Common Name</b>	<b>EPBC Status</b>	<b>NPW Act Status</b>	<b>Subregional Status*</b>
<i>Comesperma volubile</i>	Love Creeper			RA
<i>Convolvulus angustissimus</i>	Narrow-leaf Bindweed			
<i>Convolvulus remotus</i>	Grassy Bindweed			LC
<i>Corybas despectans</i> <sup>^</sup>	Coast Helmet-orchid			NT
<i>Craspedia variabilis</i>	Billy-buttons			
<i>Crassula colligata ssp. lamprosperma</i>				LC
<i>Crassula decumbens var. decumbens</i>	Spreading Crassula			LC
<i>Cyperus flaccidus</i>	Flaccid Flat-sedge		R	
<i>Cyperus gymnocaulos</i>	Spiny Flat-sedge			LC
<i>Cyperus vaginatus</i>	Stiff Flat-sedge			LC
<i>Cyrtostylis robusta</i>	Robust Gnat-orchid			LC
<i>Daucus glochidiatus</i>	Native Carrot			LC
<i>Dianella brevicaulis</i>	Short-stem Flax-lily			LC
<i>Dianella brevicaulis/revoluta var.</i>	Black-anther Flax-lily			
<i>Dianella revoluta var.</i>				
<i>Dianella revoluta var. revoluta</i>	Black-anther Flax-lily			LC
<i>Dichelachne crinita</i>	Long-hair Plume-grass			LC
<i>Dichondra repens</i>	Kidney Weed			LC
<i>Disphyma crassifolium ssp. clavellatum</i>	Round-leaf Pigface			LC
<i>Distichlis distichophylla</i>	Emu-grass			LC
<i>Drosera glanduligera</i>	Scarlet Sundew			LC
<i>Drosera praefolia</i>	Early Sundew		R	VU
<i>Drosera whittakeri</i>	Scented Sundew			LC
<i>Einadia nutans ssp.</i>	Climbing Saltbush			
<i>Einadia nutans ssp. nutans</i>	Climbing Saltbush			LC
<i>Enchylaena tomentosa var. tomentosa</i>	Ruby Saltbush			LC
<i>Enneapogon nigricans</i> <sup>^</sup>	Black-head Grass			LC
<i>Eucalyptus cosmophylla</i>	Cup Gum			LC
<i>Eucalyptus diversifolia ssp. diversifolia</i>	Coastal White Mallee			RA
<i>Eucalyptus gracilis</i>	Yorrell			RA
<i>Eucalyptus leucoxylon ssp. leucoxylon</i>	South Australian Blue Gum			NT
<i>Eucalyptus porosa</i>	Mallee Box			NT
<i>Eucalyptus rugosa</i>	Coastal White Mallee			VU
<i>Eutaxia diffusa</i>	Large-leaf Eutaxia			RA
<i>Eutaxia microphylla</i>	Common Eutaxia			LC
<i>Exocarpos cupressiformis</i>	Native Cherry			LC
<i>Ficinia nodosa</i>	Knobby Club-rush			LC
<i>Gahnia deusta</i>	Limestone Saw-sedge			NT
<i>Gahnia lanigera</i>	Black Grass Saw-sedge			LC
<i>Galium compactum</i>	Compact Bedstraw			RA
<i>Geranium potentilloides var. potentilloides</i>	Downy Geranium			LC
<i>Glycine rubiginosa</i>	Twining Glycine			NT
<i>Gnaphalium indutum ssp. indutum</i>	Tiny Cudweed			NT
<i>Gonocarpus mezianus</i>	Broad-leaf Raspwort			LC
<i>Goodenia amplexans</i>	Clasping Goodenia			NT
<i>Goodenia blackiana</i>	Native Primrose			LC
<i>Goodenia willisiana</i>	Silver Goodenia			NT
<i>Hakea rostrata</i>	Beaked Hakea			LC

<b>Species</b>	<b>Common Name</b>	<b>EPBC Status</b>	<b>NPW Act Status</b>	<b>Subregional Status*</b>
<i>Hakea vittata</i>	Limestone Needlebush			VU
<i>Haloragis aspera</i>	Rough Raspwort			RA
<i>Hardenbergia violacea</i>	Native Lilac			NT
<i>Helichrysum leucopsideum</i>	Satin Everlasting			LC
<i>Hibbertia cinerea</i>	Port Lincoln Guinea-flower		R	
<i>Hibbertia crinita</i>	Velvet-leaf Guinea-flower			NT
<i>Hibbertia pallidiflora</i>	Round-leaf Guinea-flower			
<i>Hibbertia riparia</i>	Bristly Guinea-flower			LC
<i>Hibbertia sericea</i>	Silky Guinea-flower			
<i>Hibbertia spp.</i> <sup>^</sup>	Guinea flower			
<i>Hyalosperma demissum</i>	Dwarf Sunray			LC
<i>Hydrocotyle capillaris</i>	Thread Pennywort			RA
<i>Hydrocotyle foveolata</i>	Yellow Pennywort			LC
<i>Juncus kraussii</i>	Sea Rush			LC
<i>Juncus pallidus</i>	Pale Rush			LC
<i>Kennedia prostrata</i>	Scarlet Runner			LC
<i>Kunzea pomifera</i>	Muntries			RA
<i>Lachnagrostis billardierei ssp. billardierei</i>	Coast Blown-grass			RA
<i>Leiocarpa supina</i>	Coast Plover-daisy			RA
<i>Lepidosperma carphoides</i>	Black Rapier-sedge			LC
<i>Lepidosperma congestum</i>	Clustered Sword-sedge			NT
<i>Lepidosperma gladiatum</i>	Coast Sword-sedge			NT
<i>Lepidosperma viscidum</i>	Sticky Sword-sedge			LC
<i>Leptorhynchos squamatus ssp. squamatus</i>	Scaly Buttons			LC
<i>Leucophyta brownii</i>	Coast Cushion Bush			LC
<i>Leucopogon parviflorus</i>	Coast Beard-heath			LC
<i>Levenhookia dubia</i>	Hairy Stylewort			LC
<i>Lobelia anceps</i>	Angled Lobelia			LC
<i>Logania crassifolia</i>	Coast Logania			RA
<i>Logania minor</i>	Spoon-leaf Logania			EN
<i>Lomandra collina</i>	Sand Mat-rush			NT
<i>Lomandra densiflora</i>	Soft Tussock Mat-rush			LC
<i>Lomandra effusa</i>	Scented Mat-rush			LC
<i>Lomandra micrantha ssp.</i>	Small-flower Mat-rush			
<i>Lomandra micrantha ssp. micrantha</i>	Small-flower Mat-rush			LC
<i>Lotus australis</i>	Austral Trefoil			NT
<i>Maireana brevifolia</i>	Short-leaf Bluebush			LC
<i>Maireana enchylaenoides</i>	Wingless Fissure-plant			LC
<i>Melaleuca lanceolata</i>	Dryland Tea-tree			NT
<i>Microseris walteri</i>	Yam Daisy			LC
<i>Microtis arenaria</i>	Notched Onion-orchid			LC
<i>Microtis unifolia complex</i>	Onion-orchid			
<i>Millotia muelleri</i>	Common Bow-flower			LC
<i>Millotia tenuifolia var. tenuifolia</i>	Soft Millotia			LC
<i>Minuria leptophylla</i>	Minnie Daisy			NT
<i>Muehlenbeckia gunnii</i>	Coastal Climbing Lignum			LC
<i>Myoporum insulare</i>	Common Boobialla			LC
<i>Myosotis australis ssp. australis</i>	Austral Forget-me-not			RA

Species	Common Name	EPBC Status	NPW Act Status	Subregional Status*
<i>Nitraria billardierei</i>	Nitre-bush			RA
<i>Olearia axillaris</i>	Coast Daisy-bush			LC
<i>Olearia ramulosa</i>	Twiggy Daisy-bush			LC
<i>Opercularia turpis</i>	Twiggy Stinkweed			LC
<i>Ophioglossum lusitanicum</i>	Austral Adder's-tongue			NT
<i>Orobanche cernua</i> var. <i>australiana</i> <sup>^</sup>	Australian Broomrape		R	EN
<i>Oxalis perennans</i>	Native Sorrel			LC
<i>Oxalis perennans/exilis</i>	Native Oxalis			
<i>Pauridia glabella</i> var. <i>glabella</i>	Tiny Star			LC
<i>Pimelea serpyllifolia</i> ssp. <i>serpyllifolia</i>	Thyme Riceflower			LC
<i>Poa clelandii</i>	Matted Tussock-grass			LC
<i>Poa poiformis</i> var. <i>poiformis</i>	Coast Tussock-grass			LC
<i>Podolepis tepperi</i>	Delicate Copper-wire Daisy			NT
<i>Podotroche angustifolia</i>	Sticky Long-heads			NT
<i>Pogonolepis muelleriana</i>	Stiff Cup-flower			NT
<i>Pomaderris paniculosa</i> ssp. <i>paniculosa</i>	Mallee Pomaderris			NT
<i>Prostanthera aspalathoides</i> <sup>^</sup>	Scarlet Mintbush			VU
<i>Ptilotus spathulatus</i>	Pussy-tails			NT
<i>Pultenaea densifolia</i>	Dense Bush-pea			RA
<i>Pultenaea tenuifolia</i>	Narrow-leaf Bush-pea			NT
<i>Rhagodia candolleana</i> ssp.	Sea-berry Saltbush			
<i>Rhagodia candolleana</i> ssp. <i>candolleana</i>	Sea-berry Saltbush			LC
<i>Rhodanthe pygmaea</i>	Pigmy Daisy			NT
<i>Rumex brownii</i>	Slender Dock			LC
<i>Rytidosperma caespitosum</i>	Common Wallaby-grass			LC
<i>Rytidosperma geniculatum</i>	Kneed Wallaby-grass			LC
<i>Rytidosperma racemosum</i> var. <i>racemosum</i>	Slender Wallaby-grass			LC
<i>Rytidosperma setaceum</i>	Small-flower Wallaby-grass			LC
<i>Santalum acuminatum</i> <sup>^</sup>	Quandong			RA
<i>Schoenus breviculmis</i>	Matted Bog-rush			LC
<i>Schoenus deformis</i>	Small Bog-rush			RA
<i>Schoenus nitens</i>	Shiny Bog-rush			NT
<i>Sebaea ovata</i>	Yellow Sebaea			NT
<i>Senecio odoratus</i>	Scented Groundsel			
<i>Senecio phelleus</i>	Woodland Groundsel			NT
<i>Senecio picridioides</i>	Purple-leaf Groundsel			LC
<i>Senecio pinnatifolius</i> group	Variable Groundsel			
<i>Senecio pinnatifolius</i> spp. <sup>^</sup>	Variable Groundsel			
<i>Senecio pinnatifolius</i> var. <i>maritimus</i> <sup>^</sup>	Coast Groundsel			RA
<i>Siloxerus multiflorus</i>	Small Wrinklewort			LC
<i>Spergularia tasmanica</i>	Coast Sand-spurrey			
<i>Spinifex hirsutus</i>	Rolling Spinifex			
<i>Sporobolus virginicus</i>	Salt Couch			LC
<i>Styphelia humifusa</i>	Cranberry Heath			LC
<i>Tetragonia implexicoma</i>	Bower Spinach			LC
<i>Threlkeldia diffusa</i>	Coast Bonefruit			NT
<i>Thysanotus baueri</i>	Mallee Fringe-lily			RA
<i>Thysanotus patersonii</i>	Twining Fringe-lily			LC

Species	Common Name	EPBC Status	NPW Act Status	Subregional Status*
<i>Tricoryne tenella</i>	Tufted Yellow Rush-lily			LC
<i>Triglochin nana</i>	Dwarf Arrowgrass			
<i>Triglochin striata</i>	Streaked Arrowgrass			LC
<i>Triodia compacta</i>	Spinifex			RA
<i>Vittadinia australasica</i> var.	Sticky New Holland Daisy			
<i>Vittadinia australasica</i> var. <i>australasica</i>	Sticky New Holland Daisy			NT
<i>Vittadinia cuneata</i> var. <i>cuneata</i>	Fuzzy New Holland Daisy			LC
<i>Vittadinia gracilis</i>	Woolly New Holland Daisy			LC
<i>Vittadinia megacephala</i>	Giant New Holland Daisy			NT
<i>Wahlenbergia gracilentia</i>	Annual Bluebell			LC
<i>Wahlenbergia stricta</i> ssp. <i>stricta</i>	Tall Bluebell			LC
<i>Wilsonia backhousei</i>	Narrow-leaf Wilsonia			VU
<i>Wilsonia humilis</i> <sup>^</sup>	Silky Wilsonia			VU
<i>Wurmbea dioica</i> ssp. <i>dioica</i>	Early Nancy			LC
<i>Wurmbea latifolia</i> ssp. <i>vanessae</i>	Broad-leaf Nancy		R	VU
<i>Xanthorrhoea semiplana</i> ssp.	Yacca			
<i>Xanthorrhoea semiplana</i> ssp. <i>tateana</i>	Tate's Grass-tree		R	NT

<sup>^</sup> denotes records from technical updates, review of publications and local input

\*See Appendices for subregional map

Regional Conservation status, Mount Lofty Ranges IBRA (Interim Biogeographical Regionalisation for Australia) subregion (Gillam & Urban (2014). Regional Species Conservation Assessment Project, Phase 1 Report - Regional Species Status Assessments, Adelaide and Mount Lofty Ranges NRM Region. DEWNR: SA)

RE = Regionally Extinct    CR = Critically Endangered    EN = Endangered  
VU = Vulnerable    RA = Rare    NT = Near Threatened  
LC = Least Concern    DD = Data Deficient    NE = Not Evaluated

## All Introduced Flora in cell

Species	Common Name	Red Alert Weeds	Declared Weeds	WONS
<i>Acacia cyclops</i>	Western Coastal Wattle	IC		
<i>Acacia saligna</i> <sup>*</sup>	Golden Wreath Wattle	HP		
<i>Aira caryophyllea</i> <sup>*</sup>	Silvery Hair-grass			
<i>Aira cupaniana</i>	Small Hair-grass			
<i>Aira elegantissima</i>	Delicate Hair-grass			
<i>Alternanthera pungens</i>	Khaki Weed	IC	Yes	
<i>Apium graveolens</i>	Celery			
<i>Arctotheca calendula</i>	Cape Weed	HP		
<i>Asparagus asparagoides</i> <sup>*</sup>	Bridal creeper		Yes	Yes
<i>Asparagus asparagoides</i> f. <i>asparagoides</i>	Bridal Creeper (form)	IC	Yes	Yes
<i>Asphodelus fistulosus</i>	Onion Weed	HP		
<i>Atriplex prostrata</i>	Creeping Saltbush			
<i>Avellinia festucoides</i>	Avellinia			
<i>Avena barbata</i>	Bearded Oat			
<i>Bellardia latifolia</i>	Red Bartsia			
<i>Brachypodium distachyon</i>	False Brome			
<i>Brassica tournefortii</i>	Wild Turnip			

Species	Common Name	Red Alert Weeds	Declared Weeds	WONS
<i>Briza minor</i>	Lesser Quaking-grass			
<i>Bromus catharticus</i>	Prairie Grass			
<i>Bromus diandrus</i>	Great Brome			
<i>Bromus hordeaceus ssp. hordeaceus</i>	Soft Brome			
<i>Bromus madritensis</i>	Compact Brome			
<i>Bromus rubens</i>	Red Brome			
<i>Bupleurum semicompositum</i>	Hare's Ear			
<i>Cakile maritima ssp. maritima</i>	Two-horned Sea Rocket			
<i>Carduus tenuiflorus</i>	Slender Thistle			
<i>Cassytha glabella f. glabella</i>	Slender Dodder-laurel			
<i>Catapodium rigidum</i>	Rigid Fescue			
<i>Cenchrus clandestinus</i>	Kikuyu	HP		
<i>Centaurea melitensis</i>	Malta Thistle			
<i>Centaurium tenuiflorum</i>	Branched Centaury			
<i>Cerastium balearicum</i>	Chickweed			
<i>Cerastium glomeratum</i>	Common Mouse-ear Chickweed			
<i>Cerastium pumilum</i>	Chickweed			
<i>Chenopodium album</i>	Fat Hen			
<i>Chenopodium glaucum</i>	Glaucous Goosefoot			
<i>Cirsium vulgare</i>	Spear Thistle			
<i>Cotula coronopifolia</i>	Water Buttons			
<i>Crepis pusilla</i>	Dandelion Crepis			
<i>Cuscuta campestris</i>	Golden Dodder	HP	Yes	
<i>Dactylis glomerata</i>	Cocksfoot			
<i>Diploaxis tenuifolia</i>	Lincoln Weed		Yes	
<i>Dittrichia graveolens</i>	Stinkweed			
<i>Echium plantagineum</i>	Salvation Jane		Yes	
<i>Ehrharta calycina</i>	Perennial Veldt Grass	HP		
<i>Ehrharta longiflora</i>	Annual Veldt Grass			
<i>Eragrostis curvula*</i>	African Love-grass	IC	Yes	
<i>Erodium botrys</i>	Long Heron's-bill			
<i>Euphorbia paralias</i>	Sea Spurge	HP		
<i>Euphorbia serpens</i>	Matted Sandmat			
<i>Euphorbia terracina*</i>	False Caper	HP	Yes	
<i>Galium murale</i>	Small Bedstraw			
<i>Gazania linearis</i>	Gazania	IC	Yes	
<i>Geranium molle</i>	Soft Geranium			
<i>Gomphocarpus cancellatus</i>	Broad-leaf Cotton-bush	HP		
<i>Hirschfeldia incana</i>	Hoary Mustard			
<i>Hordeum glaucum</i>	Blue Barley-grass			
<i>Hordeum marinum</i>	Sea Barley-grass			
<i>Hypochaeris glabra</i>	Smooth Cat's Ear			
<i>Hypochaeris radicata</i>	Rough Cat's Ear			
<i>Juncus capitatus</i>	Dwarf Rush			
<i>Lagurus ovatus</i>	Hare's Tail Grass			
<i>Lolium loliaceum</i>	Stiff Ryegrass			
<i>Lolium perenne</i>	Perennial Ryegrass			
<i>Lolium perenne X Lolium rigidum</i>	Hybrid Ryegrass			
<i>Lolium rigidum</i>	Wimmera Ryegrass			

Species	Common Name	Red Alert Weeds	Declared Weeds	WONS
<i>Lupinus cosentinii</i>	Blue Lupin			
<i>Lycium ferocissimum</i>	African Boxthorn	IC	Yes	Yes
<i>Lysimachia arvensis</i>	Pimpernel			
<i>Marrubium vulgare</i>	Horehound	IC	Yes	
<i>Medicago minima</i>	Little Medic			
<i>Medicago polymorpha</i>	Burr-medic			
<i>Melianthus comosus</i>	Tufted Honey-flower	IC		
<i>Melianthus major</i>	Cape Honey-flower	IC		
<i>Melilotus indicus</i>	King Island Melilot			
<i>Moenchia erecta</i>	Erect Chickweed			
<i>Oenothera stricta ssp. stricta</i>	Common Evening Primrose			
<i>Olea europaea ssp. europaea</i>	Olive	IC		
<i>Oxalis pes-caprae</i>	Soursob			
<i>Parapholis incurva</i>	Curly Ryegrass			
<i>Paspalum dilatatum</i>	Paspalum			
<i>Phalaris aquatica</i>	Phalaris			
<i>Plantago coronopus ssp.</i>	Bucks-horn Plantain			
<i>Polycarpon tetraphyllum</i>	Four-leaf Allseed			
<i>Polypogon maritimus</i>	Coast Beard-grass			
<i>Polypogon monspeliensis</i>	Annual Beard-grass			
<i>Rapistrum rugosum ssp. rugosum</i>	Turnip Weed			
<i>Reichardia tingitana</i>	False Sowthistle			
<i>Rostraria cristata</i>	Annual Cat's-tail			
<i>Rumex acetosella</i>	Sorrel			
<i>Rumex crispus</i>	Curled Dock			
<i>Rumex hypogaeus</i>	Three-corner Jack	HP	Yes	
<i>Rumex pulcher ssp.</i>	Fiddle Dock			
<i>Sabulina mediterranea</i>	Slender Sandwort			
<i>Salvia verbenaca var.</i>	Wild Sage			
<i>Schismus barbatus</i>	Arabian Grass			
<i>Sherardia arvensis</i>	Field Madder			
<i>Silene nocturna</i>	Mediterranean Catchfly			
<i>Sixalix atropurpurea</i>	Pincushion	IC		
<i>Solanum linnaeanum</i>	Apple Of Sodom	HP	Yes	
<i>Sonchus oleraceus</i>	Common Sow-thistle			
<i>Stellaria media</i>	Chickweed			
<i>Thinopyrum junceiforme*</i>	Sea Wheat-grass	IC		
<i>Tribulus terrestris</i>	Caltrop		Yes	
<i>Trifolium angustifolium</i>	Narrow-leaf Clover			
<i>Trifolium arvense var. arvense</i>	Hare's-foot Clover			
<i>Trifolium campestre</i>	Hop Clover			
<i>Trifolium resupinatum var. resupinatum</i>	Shaftal Clover			
<i>Trifolium scabrum</i>	Rough Clover			
<i>Trifolium tomentosum</i>	Woolly Clover			
<i>Urospermum picroides</i>	False Hawkbit			
<i>Vulpia fasciculata</i>	Sand Fescue			
<i>Vulpia muralis</i>	Wall Fescue			
<i>Vulpia myuros f. megalura</i>	Fox-tail Fescue			
<i>Vulpia myuros f. myuros</i>	Rat's-tail Fescue			

**WONS** = Weeds of National Significance.

**Declared** = Declared under the Landscape South Australia Act 2019. Pest plants that are a significant threat to agriculture, the natural environment and public health and safety are called declared plants. Land owners have a legal responsibility to manage these plants.

**Red Alert** = Weed Threat Level of four or greater out of nine. Plants in this categorised are either designated as requiring immediate control (IC – 6-9) or as a high priority for control (HP – 4-5). See Department for Environment and Water (2024)

**Reference** – Department for Environment and Water (2024). Threatening Processes - Environmental and Priority Weed Species. Southern Fleurieu Coastal Action Plan Review 2024. Prepared by SA Herbarium

## FAUNA Summary

# Fauna in cell	121
# Native Fauna in cell	105
# Introduced Fauna in cell	16
# Conservation Rated Fauna in cell	20 (3 national, 13 state)

Conservation Rated Fauna				
Species	Common Name	Class	EPBC Act Status	NPW Act Status
<i>Actitis hypoleucos</i> <sup>^</sup>	Common Sandpiper	AVES		R
<i>Cereopsis novaehollandiae novaehollandiae</i> <sup>^</sup>	Cape Barren Goose	AVES		R
<i>Coturnix ypsilophora australis</i> <sup>^</sup>	Brown Quail	AVES		V
<i>Falco peregrinus macropus</i>	Peregrine Falcon	AVES		R
<i>Falcunculus frontatus frontatus</i> <sup>^</sup>	Eastern Shrike-tit	AVES		R
<i>Haematopus fuliginosus fuliginosus</i>	Sooty Oystercatcher	AVES		R
<i>Haematopus longirostris</i> <sup>^</sup>	Pied Oystercatcher	AVES		R
<i>Haliaeetus leucogaster</i> <sup>^</sup>	White-bellied Sea Eagle	AVES		E
<i>Larus dominicanus dominicanus</i> <sup>^</sup>	Kelp Gull	AVES		R
<i>Neophema elegans elegans</i>	Elegant Parrot	AVES		R
<i>Pandion haliaetus cristatus</i> <sup>^</sup>	Eastern Osprey	AVES		E
<i>Platycercus elegans</i>	Crimson Rosella	AVES	ssp	
<i>Thinornis cucullatus cucullatus</i>	Hooded Plover	AVES	VU	V
<i>Turnix varius varius</i>	Painted Buttonquail	AVES		R
<i>Zanda funerea whiteae</i>	Yellow-tailed Black Cockatoo	AVES		V
<i>Zapornia tabuensis</i> <sup>^</sup>	Spotless Crake	AVES		R
<i>Antechinus flavipes</i> <sup>^</sup>	Yellow-footed Antechinus	MAM		V
<i>Rattus lutreolus</i> <sup>^</sup>	Swamp Rat	MAM		R
<i>Tachyglossus aculeatus</i> <sup>^</sup>	Short-beaked Echidna	MAM	ssp	ssp
<i>Egernia cunninghami</i> <sup>^</sup>	Cunningham's Skink	REP		E

## All Native Fauna in cell

Species Name	Common Name	Class	EPBC Act Status	NPW Act Status	Subregional Status
<i>Acanthagenys rufogularis</i> <sup>^</sup>	Spiny-cheeked Honeyeater	AVES			LC
<i>Acanthiza chrysorrhoa</i>	Yellow-rumped Thornbill	AVES			LC
<i>Accipiter cirrocephalus cirrocephalus</i> <sup>^</sup>	Collared Sparrowhawk	AVES			RA
<i>Actitis hypoleucos</i> <sup>^</sup>	Common Sandpiper	AVES		R	RA
<i>Anthochaera carunculata</i>	Red Wattlebird	AVES			LC
<i>Anthus australis</i>	Australian Pipit	AVES			LC
<i>Aquila audax audax</i>	Wedge-tailed Eagle	AVES			RA
<i>Artamus cyanopterus</i>	Dusky Woodswallow	AVES			NT
<i>Cacatua galerita</i>	Sulphur-crested Cockatoo	AVES			
<i>Cacomantis flabelliformis</i> <sup>^</sup>	Fan tailed cuckoo	AVES			
<i>Caligavis chrysops samueli</i>	Yellow-faced Honeyeater (MLR, southern FR)	AVES			
<i>Cereopsis novaehollandiae novaehollandiae</i> <sup>^</sup>	Cape Barren Goose	AVES		R	
<i>Chroicocephalus novaehollandiae novaehollandiae</i>	Silver Gull	AVES			LC

Species Name	Common Name	Class	EPBC Act Status	NPW Act Status	Subregional Status
<i>Colluricincla harmonica</i>	Grey Shrikethrush	AVES			LC
<i>Coracina novaehollandiae</i>	Black-faced Cuckooshrike	AVES			LC
<i>Corvus mellori</i>	Little Raven	AVES			LC
<i>Coturnix pectoralis</i>	Stubble Quail	AVES			LC
<i>Coturnix ypsilophora australis</i> <sup>^</sup>	Brown Quail	AVES		V	
<i>Cracticus nigrogularis</i> <sup>^</sup>	Pied butcher bird	AVES			
<i>Egretta novaehollandiae</i>	White-faced Heron	AVES			LC
<i>Egretta sacra</i> <sup>^</sup>	Eastern Reef Egret	AVES			
<i>Elanus axillaris</i> <sup>^</sup>	Black-shouldered Kite	AVES			LC
<i>Eolophus roseicapilla</i>	Galah	AVES			LC
<i>Falco berigora berigora</i>	Brown Falcon	AVES			LC
<i>Falco cenchroides cenchroides</i>	Nankeen Kestrel	AVES			LC
<i>Falco peregrinus macropus</i>	Peregrine Falcon	AVES		R	RA
<i>Falcunculus frontatus frontatus</i> <sup>^</sup>	Eastern Shrike-tit	AVES		R	
<i>Gavialis virescens</i>	Singing Honeyeater	AVES			LC
<i>Grallina cyanoleuca cyanoleuca</i>	Magpie-lark	AVES			LC
<i>Gymnorhina tibicen</i>	Australian Magpie	AVES			LC
<i>Haematopus fuliginosus fuliginosus</i>	Sooty Oystercatcher	AVES		R	VU
<i>Haematopus longirostris</i> <sup>^</sup>	Pied Oystercatcher	AVES		R	VU
<i>Haliaeetus leucogaster</i> <sup>^</sup>	White-bellied Sea Eagle	AVES		E	EN
<i>Hirundo neoxena neoxena</i>	Welcome Swallow	AVES			LC
<i>Hydroprogne caspia</i>	Caspian Tern	AVES			LC
<i>Larus dominicanus dominicanus</i> <sup>^</sup>	Kelp Gull	AVES		R	RA
<i>Larus pacificus georgii</i>	Pacific Gull	AVES			LC
<i>Melithreptus lunatus</i>	White-naped Honeyeater	AVES			RA
<i>Microcarbo melanoleucos melanoleucos</i>	Little Pied Cormorant	AVES			LC
<i>Mirafra javanica</i>	Horsfield's Bush Lark	AVES			
<i>Morus serrator</i>	Australasian Gannet	AVES			NT
<i>Neophema elegans elegans</i>	Elegant Parrot	AVES		R	RA
<i>Ocyphaps lophotes lophotes</i>	Crested Pigeon	AVES			LC
<i>Pachycephala fuliginosa fuliginosa</i>	Western Whistler	AVES			
<i>Pachycephala rufiventris rufiventris</i>	Rufous Whistler	AVES			
<i>Pandion haliaetus cristatus</i> <sup>^</sup>	Eastern Osprey	AVES		E	
<i>Parvipsitta porphyrocephala</i> <sup>^</sup>	Purple-crowned Lorikeet	AVES			LC
<i>Phalacrocorax fuscescens</i>	Black-faced Cormorant	AVES			NT
<i>Phalacrocorax sulcirostris</i> <sup>^</sup>	Little Black Cormorant	AVES			LC
<i>Phalacrocorax varius hypoleucos</i>	Australian Pied Cormorant	AVES			LC
<i>Phaps chalcoptera</i>	Common Bronzewing	AVES			LC
<i>Phaps elegans elegans</i>	Brush Bronzewing	AVES			LC
<i>Phylidonyris novaehollandiae</i>	New Holland Honeyeater	AVES			LC
<i>Phylidonyris novaehollandiae novaehollandiae</i>	New Holland Honeyeater (mainland SA)	AVES			
<i>Platycercus elegans</i>	Crimson Rosella	AVES	ssp		LC
<i>Psephotus haematonotus</i>	Red-rumped Parrot	AVES			LC
<i>Ptilotula penicillata</i>	White-plumed Honeyeater	AVES			LC
<i>Rhipidura albiscapa</i>	Grey Fantail	AVES			LC
<i>Rhipidura leucophrys leucophrys</i>	Willie Wagtail	AVES			LC
<i>Sericornis frontalis rosinae</i>	White-browed Scrubwren (MLR)	AVES			
<i>Strepera versicolor melanoptera</i>	Black-winged Currawong (MLR, MM, SE)	AVES			
<i>Thalasseus bergii cristatus</i>	Greater Crested Tern	AVES			LC
<i>Thinornis cucullatus cucullatus</i>	Hooded Plover	AVES	VU	V	EN
<i>Trichoglossus moluccanus moluccanus</i>	Rainbow Lorikeet	AVES			LC
<i>Turnix varius varius</i>	Painted Buttonquail	AVES		R	

Species Name	Common Name	Class	EPBC Act Status	NPW Act Status	Subregional Status
<i>Vanellus miles</i> <sup>^</sup>	Masked Lapwing	AVES			LC
<i>Zanda funerea whiteae</i>	Yellow-tailed Black Cockatoo	AVES		V	RA
<i>Zapornia tabuensis</i> <sup>^</sup>	Spotless Crake	AVES		R	RA
<i>Zosterops lateralis</i>	Silvereye	AVES			LC
<i>Antipodia atralba</i> <sup>^</sup>	Black and White Sedge-skipper	INV			
<i>Danaus petilia</i> <sup>^</sup>	Lesser Wanderer	INV			
<i>Danaus plexippus plexippus</i> <sup>^</sup>	Monarch	INV			
<i>Delias aganippe</i> <sup>^</sup>	Wood White	INV			
<i>Geitoneura klugii</i> <sup>^</sup>	Common Xenica	INV			
<i>Heteronympha merope merope</i> <sup>^</sup>	Common Brown	INV			
<i>Junonia villida calybe</i> <sup>^</sup>	Meadow Argus	INV			
<i>Lampides boeticus</i> <sup>^</sup>	Long-tailed Pea-blue	INV			
<i>Nacaduba biocellata biocellata</i> <sup>^</sup>	Two-spotted Line-blue	INV			
<i>Neolucia agricola agricola</i> <sup>^</sup>	Fringed Heath-blue	INV			
<i>Ocybadistes walkeri hypochlora</i> <sup>^</sup>	Southern Grass-dart	INV			
<i>Ogyris amaryllis meridionalis</i> <sup>^</sup>	Amaryllis Azure	INV			
<i>Ogyris olane</i> <sup>^</sup>	Olane Azure	INV			
<i>Pieris rapae rapae</i> <sup>^</sup>	Cabbage White	INV			
<i>Taractrocer papyria papyria</i> <sup>^</sup>	White-banded Grass-dart	INV			
<i>Theclinesstes albocinctus</i> <sup>^</sup>	Bitter-bush Blue	INV			
<i>Theclinesstes miskini miskini</i> <sup>^</sup>	Wattle Blue	INV			
<i>Theclinesstes serpentatus serpentatus</i> <sup>^</sup>	Salt-bush Blue	INV			
<i>Vanessa itea</i> <sup>^</sup>	Australian Admiral	INV			
<i>Vanessa kershawi</i> <sup>^</sup>	Australian Painted Lady	INV			
<i>Zizina otis labradus</i> <sup>^</sup>	Common Grass-blue	INV			
<i>Antechinus flavipes</i> <sup>^</sup>	Yellow-footed Antechinus	MAM		V	
<i>Macropus fuliginosus</i>	Western Grey Kangaroo	MAM			LC
<i>Pseudocheirus peregrinus</i> <sup>^</sup>	Common Ringtail Possum	MAM			
<i>Rattus fuscipes</i>	Bush Rat	MAM			
<i>Rattus lutreolus</i> <sup>^</sup>	Swamp Rat	MAM		R	RA
<i>Tachyglossus aculeatus</i> <sup>^</sup>	Short-beaked Echidna	MAM	ssp	ssp	
<i>Christinus marmoratus</i> <sup>^</sup>	Marbled Gecko	REP			
<i>Ctenophorus decresii</i> <sup>^</sup>	Tawny Dragon	REP			
<i>Ctenophorus decresii (revised)</i>	Tawny Rock Dragon	REP			
<i>Delma mollerii</i> <sup>^</sup>	Gulfs Delmas	REP			
<i>Egernia cunninghami</i> <sup>^</sup>	Cunningham's Skink	REP		E	
<i>Pogona barbata</i> <sup>^</sup>	Eastern Bearded Dragon	REP			
<i>Pseudonaja textilis</i> <sup>^</sup>	Eastern Brown Snake	REP			
<i>Tiliqua rugosa</i>	Sleepy Lizard	REP			
<i>Tiliqua scincoides</i> <sup>^</sup>	Eastern Bluetongue	REP			LC

**Class:** ACT = Actinopteri, AMP = Amphibia, AVES = Aves, INV = Invertebrates, MAM = Mammalia, REP= Reptilia

## All Introduced Fauna in cell

Species	Common Name
<i>Alauda arvensis arvensis</i>	Eurasian Skylark
<i>Bos taurus</i>	Cattle (European Cattle)
<i>Canis lupus familiaris</i>	Feral Dog
<i>Capra hircus</i> <sup>^</sup>	Goat
<i>Carduelis carduelis britannica</i>	European Goldfinch
<i>Cervus dama</i> <sup>^</sup>	Fallow Deer
<i>Columba livia</i>	Feral Pigeon
<i>Felis catus</i> <sup>^</sup>	Domestic Cat (Feral Cat)
<i>Mus musculus</i> <sup>^</sup>	House Mouse
<i>Oryctolagus cuniculus</i>	Rabbit (European Rabbit)
<i>Ovis aries</i>	Sheep (Feral Sheep)
<i>Passer domesticus domesticus</i>	House Sparrow
<i>Spilopelia chinensis</i>	Spotted Dove
<i>Sturnus vulgaris vulgaris</i>	Common Starling
<i>Turdus merula merula</i>	Common Blackbird
<i>Vulpes vulpes</i> <sup>^</sup>	Fox (Red Fox)



Scan or click here to view the full  
**Southern Fleurieu Coastal Action Plan**  
[hf.landscape.sa.gov.au/SFCAP](http://hf.landscape.sa.gov.au/SFCAP)

Published by the Hills and Fleurieu Landscape Board  
 2026 | FIS 1107263