

# Southern Fleurieu Coastal Action Plan

## Parsons Beach (Waipingga)

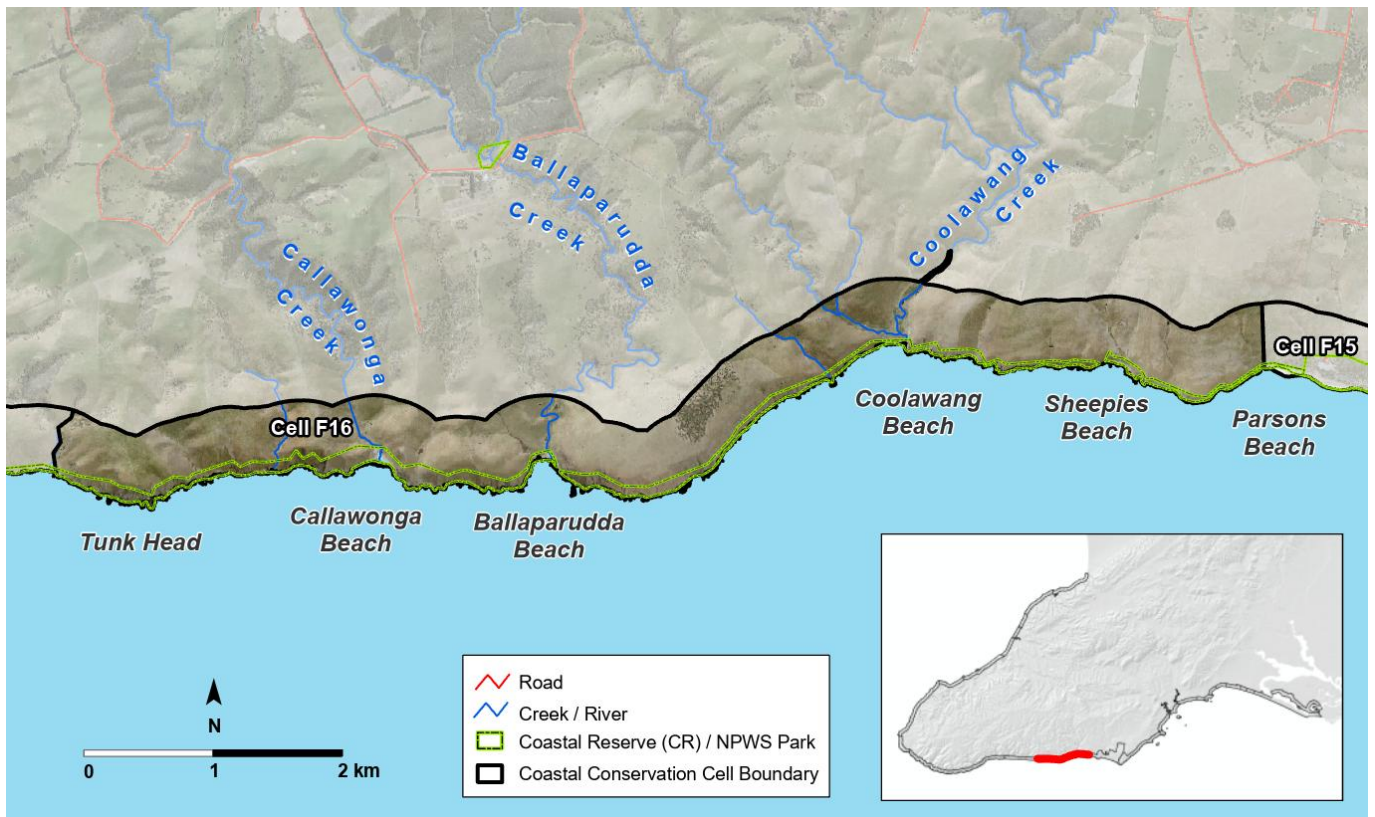
## to Tunk Head (Tangkalang)

### Cell F16

#### Overview

One of the more remote areas within the plan, this cell is predominately privately owned land, extensively cleared for grazing with isolated small pockets of remnant vegetation on coastal slopes. Cliff lines have isolated coastal heath remnants but are extensively grazed by stock and total grazing pressure is high in this cell. Pocket beaches and estuaries are critical habitats for Hooded Plovers and other fauna species. Potential habitats for *Environment Protection and Biodiversity*

*Conservation (EPBC) Act (1999)* listed ecological community *Leptosperum lanigerum tall shrubland* exist within creek lines and gullies and should be investigated for formal listing. Increased use and pressure from walkers on the Wild South Coast way may cause disturbance to beach-nesting birds and pressure on trail infrastructure.



## Cell detail

The cell extends from the western end of Parsons Beach approximately 10km to the western side of Tunkalilla Head. The area covers four pocket sandy coves, including Sheepies, Coolawang, Ballaparudda and Callawonga beaches, with the latter three also containing small estuaries. The cell is in the City of Victor Harbor and District Council of Yankalilla local government areas.

## Tenure, Land Use and Values

This cell is dominated by private land, with the public coastal reserve along the seaward length of the cell. High scenic amenity of spectacular coastal cliffs and pocket beaches. Narrow Crown Land parcels (unidentified unalienated coastal Crown land) line the edge of the cliff faces and pocket beaches. Land use in the area primarily consists of grazing (cattle, sheep and goat), but also includes hobby-farming and tourism operations. Since 2012, the waters surrounding this cell are within the boundaries of the Encounter Marine Park.

Native title has been determined for Ngarrindjeri people over land and sea Country within this cell under the *Native Title Act 1993 (Cth)*.

The cell is utilised for commercial and recreational fishing. The reefs are important habitat and fishing areas for Southern Rock Lobster (*Jasus edwardsii*) and Green lip (*Haliotis laevis*) /Black lip (*Haliotis rubra*) Abalone (Bryars 2013).

Increasing visitor numbers experience this coast through the recently upgraded section of the Heysen trail, the Wild South Coast Way from Cape Jervis to Kent Reserve Victor Harbor. Within this cell from the eastern boundary, the trail hugs the coastal cliff lines and platforms across Sheepies and Coolawang beaches and then heads inland across Balquidder station to the western end of the cell.



*Unnamed headland between Coolawang and Ballaparudda estuaries with Pink Gum (Eucalyptus fasciculosa) low woodland (right) (Coast Protection Board, March 2024)*

## Landforms

Dissected hills and plateau of the Southern Fleurieu Ranges. The coast is dominated by high cliffs, sloping boulder strewn platforms and pocket sandy beaches. This is generally a high energy shore, with limited access.

The whole cell is part of the Geological Monument 1112, Fleurieu Peninsula South Coast from Coalinga Gully (cell F18) along entire coast to Waitpinga Creek: excellent exposures/ type section of the metasediments of the Kanmantoo Group. Terrestrial vegetation has been largely cleared, however the isolated remnant Heritage Agreement 126 covering 3.89 hectares remains immediately west of Ballaparudda Beach.

## First Nations cultural heritage and connection to land and sea Country

This cell holds high cultural value and significance for the Ramindjeri people of the Ngarrindjeri Nation. It forms part of their Dreaming stories and contains numerous stories, places, and artefacts of cultural importance. Ramindjeri cultural heritage is present throughout the entire cell, everywhere you tread. The Ramindjeri lived, hunted, played, swam, and danced here. Those working within and restoring these areas may encounter artefacts or evidence of cultural significance to the Ramindjeri people and the broader Ngarrindjeri Nation. These areas must be known, recognised, respected, and protected.

Creeks, wetlands, estuaries, dunes, cliff lines, islands and coastal areas are important gathering places that support a variety of habitats and food sources essential for sustaining and protecting Nga:tji . Nga:tji are the personal totems of the Ngarrindjeri people. They embody deep cultural values, symbolising kinship, spiritual protection, and an embedded responsibility to care for the land, waters, and ecosystems they inhabit.

This cell encompasses a range of culturally significant landscape features, including Dreaming sites and other important places, traditional camping grounds as well as midden deposits scattered across the clifftops, sand hills, estuaries (Kulawangk (Coolawang), Ballaparudda and Kalawongk (Callawonga)) and beaches.

This cell encompasses a range of culturally significant landscape features, including Dreaming sites and other important places, traditional camping grounds, and midden deposits scattered across the clifftops, sand hills, beaches and estuaries including Kulawangk (Coolawang), Ballaparudda, and Kalawongk (Callawonga).

This cell is also a particularly important site in the NgurunderiNgurunderi Creation and Dreaming story, which tells of the Ngarrindjeri people's creation of the land and waters, including the River Murray and its mouth, Kandukang (west) and Tapalwora (east). This ancestral narrative extends westward along the southern coast of the Fleurieu Peninsula, encompassing the rugged shoreline, estuaries, and coastal landscapes all the way to Cape Jervis (Parrewar-angk). These areas hold deep cultural and spiritual significance for the Ramindjeri people, with Dreaming tracks, songlines, and important sites embedded throughout the region.

The coastline with its cliffs, beaches, and native vegetation reflects Ngurunderi's journey as he shaped the land, rested at key locations, and followed the tracks of his wives. Cape Jervis (Pariwa) marks an important point in this story, serving as both a physical and spiritual place in the landscape. It connects the mainland to Kangaroo Island (Ngurungai), continuing the cultural narrative of creation, movement, and connection to Country.

Within this cell, the Ngurunderi Dreaming story tells how his wives rested at Kulawangk (Coolawang Creek) near the beach, before crossing the creeks at Ballaparudda Beach and Kalawongk (Callawonga) as they continued toward Tangkalang (Tunkalilla). Ngurunderi followed their tracks along the coast, heading toward Parrewar-angk (Cape Jervis) and ultimately Kangaroo Island (Ngurungai).

*Please respect that cultural concepts and content included in this plan are the Aboriginal Cultural and Intellectual property (ACIP) of the Ramindjeri people of the Ngarrindjeri Nation (provided by Cedric Varcoe, Ramindjeri Cultural Leader living on Country) (cells 1-20). They may not be used or adapted by any other parties without consent.*

## Terrestrial biodiversity

### Whole cell

Flora diversity in this cell is limited due to extensive clearing and grazing over the last century. Pockets of vegetation exist within some cleared paddocks, creek lines and gullies, however these areas usually experience grazing pressure from stock unless adequately fenced. Remaining pockets of remnant vegetation across the coastal slopes support Pink Gum (*Eucalyptus fasciculosa*) low woodland and patchy pockets of coastal heath and Coast Daisy-bush (*Olearia axillaris*) low open shrubland long the clifftops.

Pre-European vegetation mapping of this cell highlights many of the gullies and creek lines as potential habitats for *Leptospermum lanigerum* tall shrublands that are part of the Nationally Critically Endangered ecological community called *Swamps of the Fleurieu Peninsula*, as listed in the EPBC Act 1999. The Swamps of the Fleurieu Peninsula are unlike other swamps in South Australia, in that the overall species composition, structure, diversity, geology and soils are different from those found in the South-East, Kangaroo Island, Yorke and Eyre Peninsulas (DAWE 2013).

Flora species of conservation significance recorded in this cell include Deep Creek Correa (*Correa eburnea*), Annual Celery (*Apium annuum*), Coast Spear-grass (*Austrostipa stipoides*), Coast Blown-grass (*Lachnagrostis billardierei* ssp. *billardierei*) and Creeping Monkey-flower (*Thyridia repens*).

Several fauna species of conservation significance are recorded in this cell, including Hooded Plover (*Thinornis cucullatus cucullatus*), Great Egret (*Ardea alba modesta*), Brown Songlark (*Cinchoramphus cruralis*), Caspian Tern (*Hydroprogne caspia*), Australian Pelican (*Pelecanus conspicillatus*), Baillon's Crake (*Zapornia pusilla palustris*), Eastern Reef Egret (*Egretta sacra*), Peregrine Falcon (*Falco peregrinus macropus*), Common Sandpiper (*Actitis hypoleucos*), Elegant Parrot (*Neophema elegans elegans*), Climbing Galaxias (*Galaxias brevipinnis*) and Congolli (*Pseudaphritis urvillii*).



*Congolli (Pseudaphritis urvillii)* is recorded in Waitpinga Creek estuary (D Schmarr)

The national and state vulnerable listed Hooded Plover (*Thinornis cucullatus cucullatus*) nests and forages on the whole of these remote pocket beaches of Sheepies, Callawonga, Coolawang and Ballapurra estuaries. The remote nature of the beaches in this cell provides foraging habitats for shorebirds, including Sooty Oystercatchers (*Haematopus fuliginosus*), Caspian (*Hydroprogne caspia*) and Greater Crested Terns (*Thalasseus bergii cristatus*), Silver Gulls (*Chroicocephalus novaehollandiae novaehollandiae*) and Pacific Gulls (*Larus pacificus georgii*).



*Sheepies Beach with cobbled rear beach (C Taylor)*

The Common Brown (*Heteronympha merope merope*) butterfly species are locally uncommon in the region and recorded in this cell (Stolarski 2024). Multiple common butterfly species that are observed across the Fleurieu Peninsula have been recorded in this cell, including Southern Grass-dart (*Ocybadistes walkeri hypochlora*), White-banded Grass-dart (*Taractrocera papyria papyria*), Meadow Argus (*Junonia villida calybe*), Australian Painted Lady (*Vanessa kershawi*), Australian Admiral (*Vanessa itea*), Lesser Wanderer (*Danaus petilia*), Monarch (*Danaus plexippus plexippus*), Long-tailed Pea-blue (*Lampides boeticus*), Two-spotted Line-blue (*Nacaduba biocellata biocellata*), Wattle Blue (*Theclinessthes miskini miskini*), Salt-bush Blue (*Theclinessthes serpentatus serpentatus*) and Common Grass-blue (*Zizina otis labradus*). Many of the species of conservation significance do not occur in this cell as their host plants are not present or are in low numbers and unable to support reintroduction from neighbouring cells (Stolarski 2024).



Male Common Brown (*Heteronympha merope merope*) butterflies (M Endacott)

The isolated nature and cliff lines provide refuge and valued habitat for a range of seabird species, including the White-bellied Sea Eagle (*Haliaeetus leucogaster*), Eastern Osprey (*Pandion haliaetus cristatus*), Little Black Cormorant (*Phalacrocorax sulcirostris*), Black-faced Cormorant (*Phalacrocorax fuscescens*), Pacific Gull (*Larus pacificus georgii*) and Kelp Gull (*Larus dominicanus dominicanus*). Irregular sightings of a range of pelagic birds are also reported in this cell, including albatrosses, petrels, shearwaters and gannets.

Within the cell large *Eucalyptus sp.* trees adjacent to or within remnant and open woodland, often located in gullies or along creeks, provide valuable nesting sites within breeding territories for Wedge-tailed Eagles (*Aquila audax audax*) (Dennis 2006, Rowe et al 2018).

## Estuaries

Coolawang Creek, Ballaparudda Creek and Callawonga Creek are recognised estuaries in this cell (DEH 2007).

Three small creek lines exist within this cell, including Coolawang, Callawonga and Ballaparudda creeks that form estuaries at the upper limit of the sea water incursion point on land. Coolawang estuary traverses a coastal lowland, with variable width, from 3m in its upper reaches, to 30m as it flows out across the beach. Tidal movement enters the lower sections of the estuary and surface water was connecting with the sea, including during spring and summer (Telfer and Milne 2014).

Callawonga and Ballaparudda estuaries can be accessed via private land (Balquidder Station), both with wide sandy pocket beaches and rocky shorelines either side. Tidal movement intrudes the lower reaches of the estuary during high tides and storm surges, with seasonal catchment or spring fed water flowing across the beaches.

The three estuary sites within this cell are in various condition but do support multiple species of flora and fauna which are very important, considering the extensive vegetation clearance in this cell. Assessment of Coolawang by Telfer and Milne (2014) describes the estuary as having excellent species diversity - 16 native species recorded in surveys for the vegetation community Common Reed (*Phragmites australis*), Narrow-leaf Bulrush (*Typha domingensis*) and Lignum (*Duma florulenta*) Swamps in permanent water, with regionally uncommon species present including River Bottlebrush (*Callistemon sieberi*), Silky Tea-tree (*Leptospermum lanigerum*) and Water Ribbons (*Cyanogeton procerum*) (Telfer and Milne 2014).

Assessments of Callawonga and Ballaparudda were not undertaken as part of the Telfer and Milne (2014) report due to access restriction.



*Coolawang estuary and surrounding coastal and estuarine vegetation (D Schmarr October 2025)*

Fish monitoring surveys in the Ballaparudda and Callawonga catchments (2010-2022) have recorded three diadromous fish species, including Common Galaxias (*Galaxias maculatus*), Climbing Galaxias (*Galaxia brevipinis*) and Congolli (*Pseudaphritis urvillii*) (Schmarr et al. 2022). Coolawang catchment has limited information on its fish biodiversity and may not have been surveyed since 2007 (Schmarr et al. 2022).

Green Adelaide and SARDI have recently established a fish biodiversity program to evaluate the estuary fish communities across the catchments of the Western Mount Lofty Ranges). This includes representative estuaries on the southern Fleurieu Peninsula (Hindmarsh, Inman, Tunkalilla, Waitpinga and Boat Harbour).



*Ballapurudda Creek estuary (C Taylor)*



*Callawonga Creek estuary (C Taylor)*

## Estuarine Habitats: Coolawang Creek

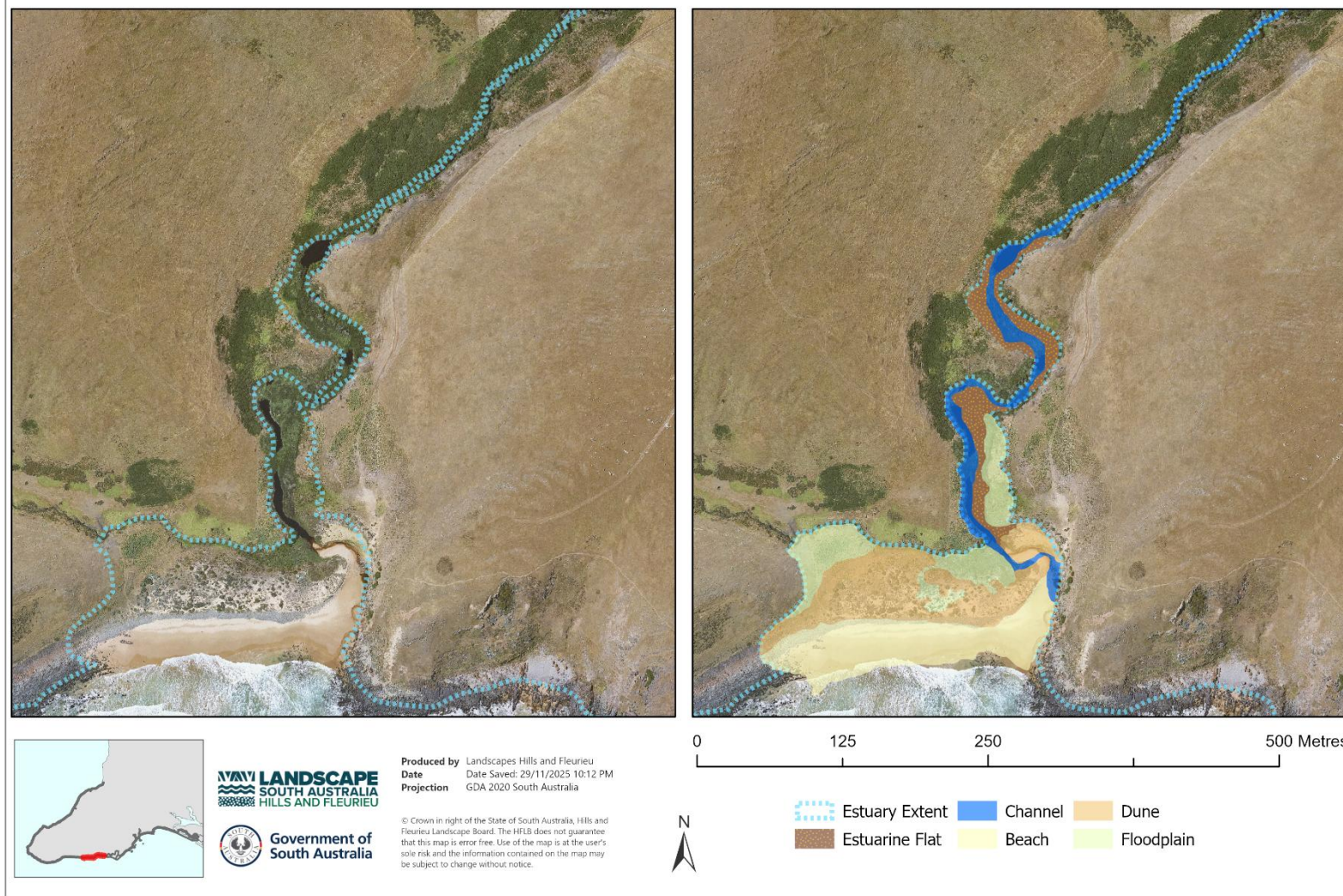


Figure 16.1 Coolawang Creek estuarine habitats

## Estuarine Habitats: Ballaparudda Creek

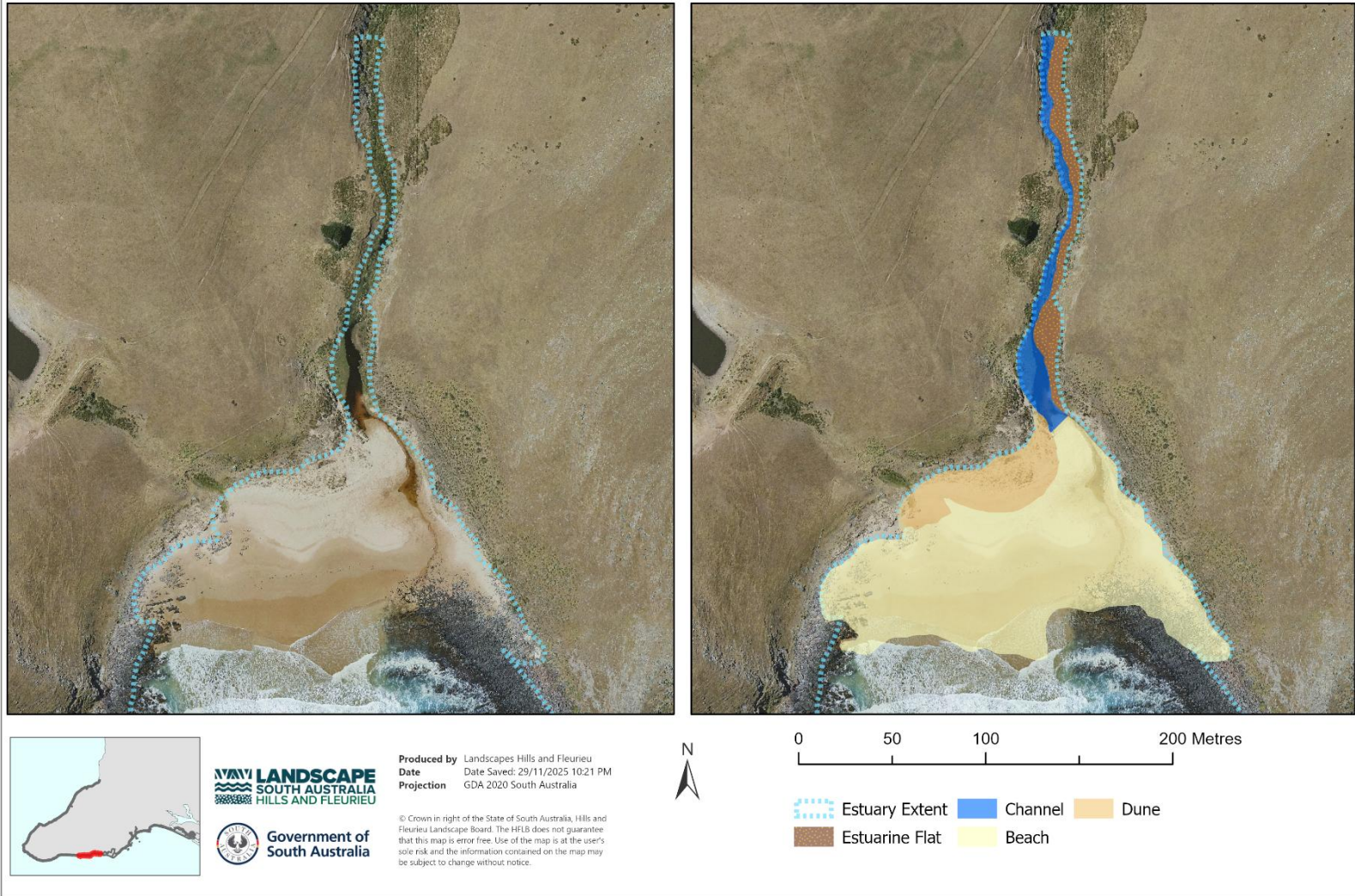


Fig 16.2 Ballaparudda Creek estuarine habitats

## Estuarine Habitats: Callawonga Creek

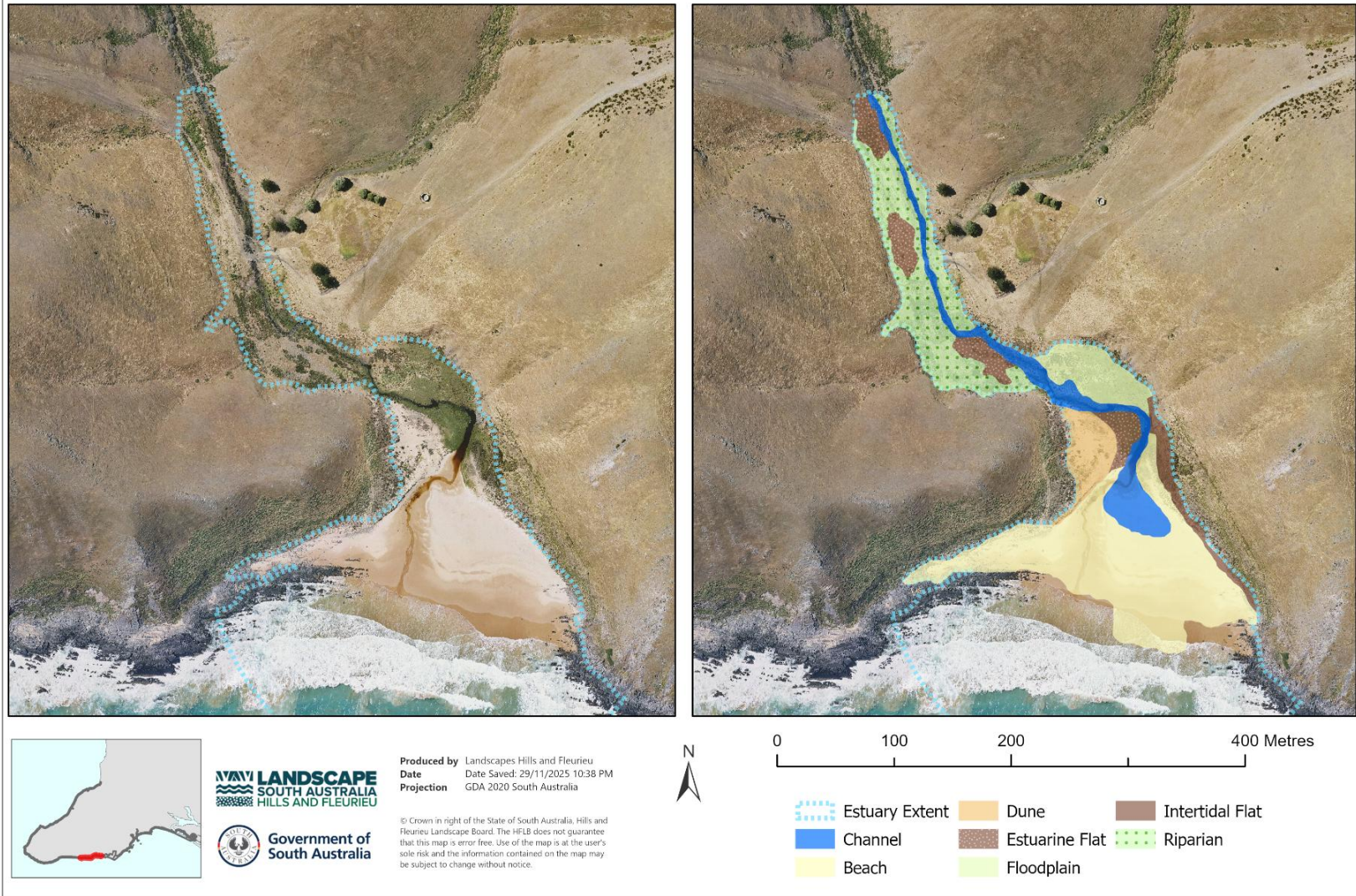


Fig 16.3 Callawonga Creek estuarine habitats

## Vegetation Communities

### Coastal Woodlands

- Drooping Sheoak (*Allocasuarina verticillata*) Low Woodland over an open grassy and herbaceous understorey. Typical understorey plants include Hard Mat-rush (*Lomandra multiflora* ssp. *dura*) + Scented Mat-rush (*Lomandra effusa*) + Wallaby Grass (*Rytidosperma* spp.) + Spear grass (*Austrostipa* spp.)
- Pink Gum (*Eucalyptus fasciculosa*) low woodland over Golden Wattle (*Acacia pycnantha*) over Kangaroo Thorn (*Acacia paradoxa*) + Twiggy Daisy-bush (*Olearia ramulosa*) +/- Tate's Grass-tree (*Xanthorrhoea semiplana* ssp. *tateana*) mid shrubs over Broad-leaf Raspwort (*Gonocarpus mezianus*) + Cranberry Heath (*Styphelia humifusa*) +/- Wire Rapier-sedge (*Lepidosperma semiteres*) low forbs

### Coastal cliff and shrublands

- Coast Daisy-bush (*Olearia axillaris*) low open shrubland over Coast Cushion Bush (*Leucophyta brownii*) + Knobby Club-rush (*Ficinia nodosa*)

### Estuaries (Coolawang) (Telfer and Milne 2014)

Common Reed (*Phragmites australis*) + Narrow-leaf Bulrush (*Typha domingensis*) Sedgeland with Sea Rush (*Juncus kraussii*) + Stiff Flat-sedge (*Cyperus vaginatus*) on edges.

## Nearshore habitats

This cell forms part of the Encounter Marine Park. Most of the marine areas of cell F16 are within a Habitat Protection Zone (HPZ-6), part of the cell F16 are within a General Managed Use Zone (GMUZ-6) (see Fig 16.4).

Bryars (2013) describes this cell as dominated by three main habitats: bare sand mainly offshore (but including Callawonga and Ballaparudda beaches inshore), continuous low profile reef that lies mainly inshore, and patchy sparse macroalgae on sand, mainly in the eastern part of the cell (Fig 16.4). Other habitats include patchy medium macroalgae on gravel/pebble, patchy medium macroalgae on sand, and patchy low profile reef.

No seagrass is mapped for this cell. Formal reef surveys have not been conducted in this cell and the composition of the reef is unknown. The inshore bare sand is characterised by a number of medium to high-energy, transverse bar rip beach systems, including Callawonga Beach and Ballaparudda Beach (Short 2001).

The cell is regionally significant due to the beach (bare sand), reef and macroalgal habitats (Bryars 2013).

### Subtidal reefs and surf beach habitats

Bryars (2013) described surveys of subtidal reefs in nearby cells have found a high diversity of fishes, invertebrates and macroalgae (e.g., Edgar et al. 2006, Haig et al. 2006, Turner et al. 2007, DEH 2008, Brook et al. 2020, Brock et al. 2023). The cell lies within a region of low macroalgal species diversity; however, this is probably partly due to a low level of collection effort (see Baker and Gurgel 2010). Bryars (2003) listed seven fish and two macroinvertebrate species for the surf beach habitat between Tunk Head and Parsons Beach, 14 fish and two macroinvertebrate species for the unvegetated soft bottom habitat between Rapid Head and Kings Head, and 17 fish and seven macroinvertebrate species for the reef habitat between Rapid Head and Kings Head.



*Brown and Green (Caleurpa brownii) algal species on rocky reef (D Easton)*

The reef ecosystem baseline study (Brook et al. 2020) and current study by Brock *et al.* (2023) assessing the trends in the condition of rocky reef ecosystems of the greater Adelaide and Fleurieu Peninsula region found that the overall status of rocky reefs was stable or improving, based on several key indicators of condition (e.g. fish and macroinvertebrate species richness, community structure, large fish biomass, macroalgae percentage cover, and reef thermal index). The south coast subregion (adjacent east to cell F16) encompasses three long term monitoring sites Newland Head, Flat Irons and West Island Outer. Combined reef survey in this subregion indicate that macroinvertebrate and fish species richness, large fish biomass and the percentage cover of canopy-forming algae has remained stable or is increasing (Brock *et al.* 2023). Marine species in the south coast subregion include 35 bony fish, one shark and ray, 33 species of marine invertebrate, and six species of crustacean (Brock et al. 2023, Edgar and Barrett (2012), Edgar and Stuart-Smith (2014), Edgar et al. (2020)). High turbidity and sediment movement due to localised swell impedes regular reef sampling along the southern Fleurieu Peninsula coastline.

While the bare sand, reef, and macroalgal habitats are likely to support a range of species (e.g. see Bryars 2003), no habitat condition or biological surveys appear to have been undertaken on these habitats within Cell F16.

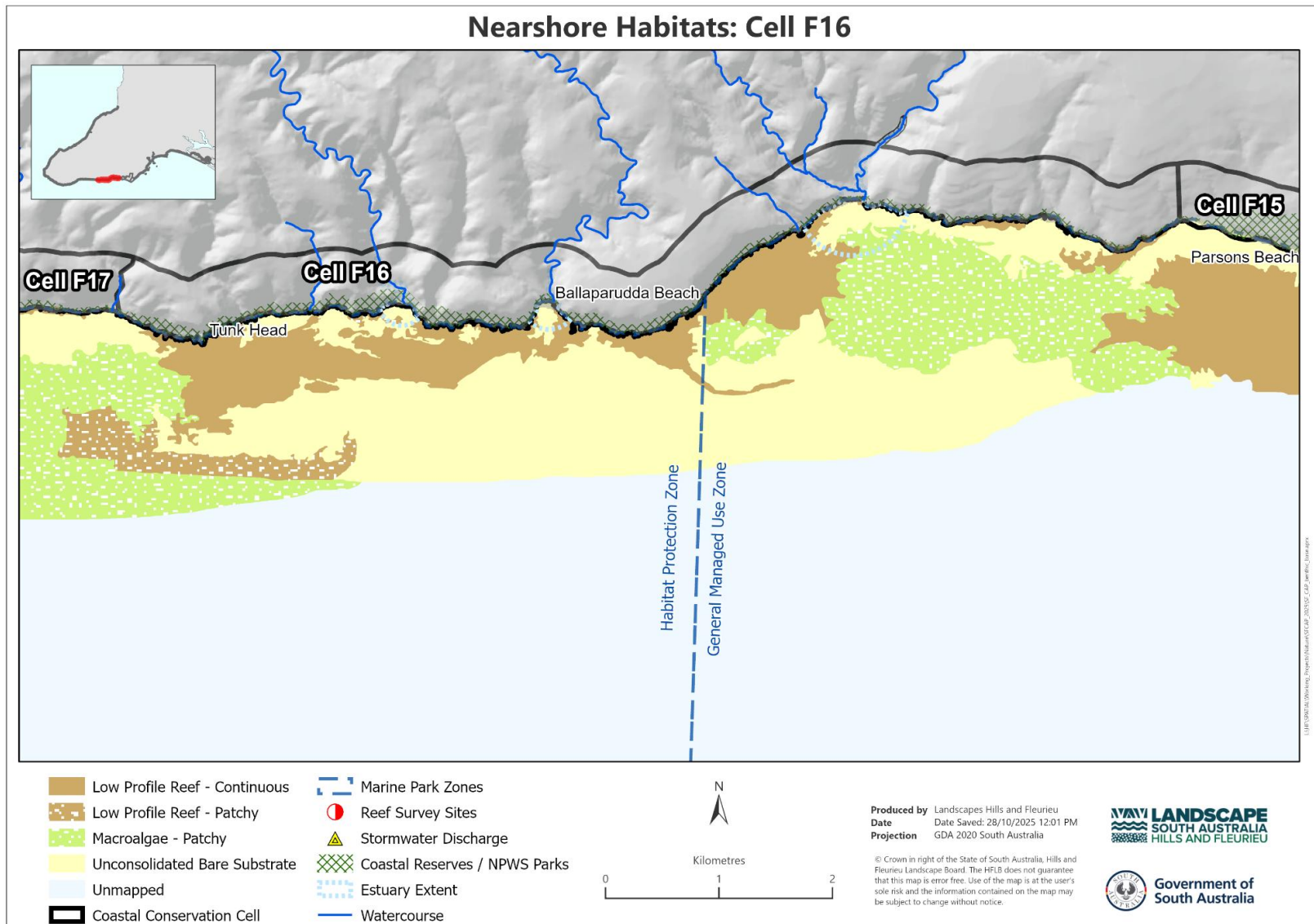


Figure 16.4. Nearshore habitats of Cell F16.

## Threats

### Whole cell

Despite extensive vegetation clearance, weed pressure exists within the cell, with high proportions of exotic plant species. Pressure from increased use of walking trails across the length of this cell also increases potential spread of weeds, erosion, damage to vegetation, litter and disturbance to wildlife including on some pocket beaches. Total grazing pressure from native and introduced species is evident due to highly limited remnant vegetation and further reduces capacity for natural regeneration.

This cell faces a high level of threat due to land use and ownership patterns, with extensive private holdings directly abutting the narrow Crown land corridor along the coastal fringe. The threat of land ownership and land use identifies some land parcels as potential threats to coastal areas due to factors like proximity to the coast or vulnerability to hazards. This highlights land parcels for potential intervention, such as zoning changes, restrictions or land purchase, to mitigate risks like erosion, inundation (storm surges, or sea-level rise), or the potential impact of current or future land use on coastal ecosystems, such as development or agriculture.

The following declared and red alert weeds are found in this cell: Coast Tea-tree (*Gaudium laevigatum*), Sea Spurge (*Euphorbia paralias*), Cape Weed (*Arctotheca calendula*), Perennial Veldt Grass (*Ehrharta calycina*) and Apple of Sodom (*Solanum linnaeanum*)

Total grazing pressure (domestic stock and Western Grey Kangaroos (*Macropus fuliginosus*), Fallow deer (*Cervus dama*) and goats (*Capra hircus*)) across the cell, but particularly along the coastal cliffs and creek lines within cell, has likely reduced species diversity and potentially threatens small and isolated pockets of remnant vegetation. Pre-European vegetation mapping suggests pockets of the EPBC Act threatened ecological community, *Swamps of the Fleurieu Peninsula*. *Leptospermum lanigerum* tall shrublands within the creek lines and gullies may still be present in this cell, even in a degraded capacity.



*Parsons Beach extending to the grazed headlands (C Taylor)*

Potential pest animal threats to coastal fauna and flora from rabbits (*Oryctolagus cuniculus*), Brown Hares (*Lepus capensis*), foxes (*Vulpes vulpes*), and cats (*Felis catus*). Coordinated collaboration between landowners and managers is required to manage pest animals (refer to Regional Pest Management Strategies).

Caton et al (2007) also noted the erosion on steep coastal slopes from damage by grazing animals, leading to episodic turbidity in small estuaries and nearshore waters. Land tenure of these slopes in private ownership often results in an absence of fencing or a lease of crown lands to the cliff line, which in effect acts as a boundary and, therefore, stock graze unimpeded to the cliff line on all vegetation present. Access to monitor condition of these sites and pocket beaches is usually negotiated with private land managers rather than via boat access from the marine environment or walking in via the Heysen Trail routes.

Several butterfly and skipper species that have localised populations are limited in capacity for dispersal and/or colonisation of new sites. The lack of suitable habitats, weed invasion and interconnectivity between habitats prohibits movements and, therefore, creates localised isolation of populations. Several species are now restricted to pockets of isolated habitats, resulting in some being vulnerable to population collapse (Stolarski 2024).

Coastal raptors are recorded to utilise habitats within the cell, including Wedge-tailed Eagles (*Aquila audax audax*) that have established breeding territories. Current and potential future threats include disturbance, recreational and industrial use of drones, wind-farms and spread of urban development (Rowe et al 2018).



*Wedge-tailed Eagles (Aquila audax audax) are regularly seen in this cell (M Stokes)*

Planning and Design Code zoning for cell from east of Coolawang Creek to eastern cell boundary is outside the Conservation Zone in Rural land to the high-water mark. As result this area is not subject to the coastal hazard zone provisions or the protections given in many other coastal areas

Bryars (2013) describes the coastline as sparsely populated with minor (but unquantified) freshwater inputs from numerous creeks, including Coolawang Creek, Ballaparudda Creek, and Callawonga Creek. Stormwater and river flows and potential nutrient and sediment inputs are therefore likely to be minor. However, Caton et al. (2007) highlighted that episodic turbidity occurs in small estuaries and nearshore areas (due to accelerated erosion on the coast), although the potential impact of these threats on nearshore habitats has not been investigated. Bryars (2013) did not identify any measurable threats to sand habitats, while seagrass was not assessed as it does not occur within the cell.

Bryars (2013) highlighted the inshore reefs within the cell would experience strong wave energy and therefore are likely subjected to naturally high levels of turbidity and sedimentation. However, Bryars further states that the types of sediments derived from catchment water would likely be different to those in the beach system and, therefore, the consequence of catchment water on reef could be minor.

## Estuaries

The estuaries in this cell are largely situated on privately owned land grazed by cattle or sheep. Fencing of stock from estuaries is a consistent challenge across landscapes for land managers. Over time, fences degrade (particularly wires when exposed to salt spray), allowing grazing stock to access the beach, creek lines and estuaries, causing erosion, degradation (pugging, grazing, other physical damage to vegetation), and impacting water quality in estuarine waters. Historically, stock have been reported on pocket beach estuary sites, causing damage that is often greater during the summer due to the presence of water and green feed, which is usually quite limited at this time in this cell. Recent land managers have undertaken a more proactive approach to maintaining fences, but incidents of stock on beaches does occur.

The diversity and structure of the estuarine vegetation communities on the Southern Fleurieu is threatened by introduced weedy species (Telfer and Milne (2014)). Within the three estuaries in this cell, the weeds identified as impacting the estuaries include Slender Thistle (*Carduus tenuiflorus*), African Daisy (*Senecio pterophorus*), Apple of Sodom (*Solanum linnaeanum*), and Evening-flower Gladiolus (*Gladiolus tristis*), which require control by the landowners.

On the beach and dunes, Sea Wheat-grass (*Thinopyrum junceiforme*) and *Euphorbia* spp. (Sea Spurge (*Euphorbia paralias*) and False Caper (*Euphorbia terracina*)) are limiting Hooded Plover habitat and require management. Foxes are a major issue at beaches within this cell and have seriously impacted nesting, chick survival and fledging success. Stock on beaches trample nest sites and disturb breeding birds.



*Foxes (Vulpes vulpes) are a significant threat and challenge to control on remote pocket beaches (LHF)*

Connectivity of estuary areas to both coast and marine waters through water flow is critical to maintain the health of the estuary. Typically, this connectedness is achieved through adequate freshwater inflows and tidal surges from the marine environment. Changes in either of these can dramatically influence local conditions for flora and fauna. Limited monitoring data of estuary flow and opening and closing durations exist for this estuary.

## Opportunities

### Whole cell

Increased visitation and use of trails across the cell should continue to be monitored to prevent further erosion and associated vegetation loss. There may be opportunity to negotiate track improvement and signage to the Heysen Trail, allowing improved access to the spectacular coastal views through the eastern part of this cell. Collaborate with First Nations communities, tourism operators and agencies to support community education and monitor visitor usage, with the aim of enhancing visitor awareness of coastal ecological and cultural values and promoting appropriate behaviours.

Community education opportunities regarding:

- Migratory and residential shorebirds (beach nesting birds, such as Hooded Plovers and Sooty Oystercatchers) and seabirds (dogs on leads, nesting sites, managing visitor disturbance) and interpretive signage at high use areas.
- Unique and valuable coastal landscape (for example, wildflowers, birds, and mammals)
- Fragile nature of coastal areas that are sensitive to foot traffic, soil compaction and erosion.
- Education and targeted communications regarding marine parks, nearshore habitats.
- Increased cultural awareness training and knowledge of culturally appropriate processes to respect known cultural heritage sites for land managers and coastal community groups
- Citizen science monitoring to contribute to intertidal reef monitoring, seagrass restoration, dolphin watch, beach pole monitoring, Fleurieu seabird monitoring program and beach nesting birds.
- Value of place and coastal values, responsible beach use and reducing human impact on dunes.
- There is opportunity for signage renewal across coastal areas to educate the community about coastal conservation, cultural significance and appropriate behaviours across the Fleurieu Peninsula coast.

Opportunity to work with nature-based tourism (commercial and recreational) operators and community volunteers to increase education and stewardship of local coastal environments and protection of species

Management of priority weed species needs to be maintained across the grazing areas, limited remnant patches and estuaries as a high priority for this cell to prevent further incursion into areas of high conservation value. Upgrades, replacement and installation of appropriate fencing to restrict stock access to cliff lines, estuaries and pocket beaches is required prior to revegetation of local coast species, to restore highly grazed areas and reduce erosion.

There are opportunities for revegetation and restoration of coastal vegetation in this cell, supporting landscape scale biodiversity connectivity. An assessment for rare plants and remnant grass and coastal heath communities could be undertaken. Crown Coastal reserve and large public and private ownership of coastal cliff line. Consider program with landowners for landscape scale conservation and connectivity (restore coastal cliff and heath communities) between Kings Head and Cape Jervis.

Targeted interventions to protect, conserve and restore threatened/rare plant species and communities, including weed control. Support new populations of rare plants through propagation and establishment of new communities to reduce pressures on isolated populations and increase species diversity.

Continue to support collaborative efforts to protect and conserve Hooded Plover breeding habitats within this cell. Implement actions to support Hooded Plover conservation, including opportunities for collaboration to manage foxes within the cell to support Hooded Plover populations and outcomes for lambing on private properties. There are opportunities to support Hooded Plover habitat by replacing introduced Sea Wheat-grass with native Spinifex.



*Hooded Plovers (Thinornis cucullatus cucullatus) have established territories on most of the pocket beaches within the cell (M Stokes)*

Stolarski (2024) proposes survey for butterfly habitats and priority species, as limited survey has been undertaken. Increase suitable habitat for coastal butterfly populations including planting of host plants in coastal areas to increase habitat suitability for local introductions.

This cell is important for coastal raptor populations and ongoing monitoring and management is critical to minimise disturbance, support and protection from emerging threats, particularly to breeding habitats (DEW 2022, Rowe et al 2018). It is also important for marine mammals, including movement by Southern Right Whales (however, there is some conflict potential with recreational activities). There is opportunity for collaboration between partners, such as National Parks, Marine Parks, First Nations, landscape boards, community and nature-based tourism operators for monitoring of seabirds, coastal raptors, marine mammals and other wildlife.

Biological surveys of the reef and sand habitats are required to better understand habitat values and compile meaningful species lists for the cell.

As part of the *Coastal Dune and Clifftop Vegetation Surveys (1995–1997)* (Opperman 1999), long-term monitoring sites were established across South Australia and the Southern Fleurieu region to assess the structure and composition of coastal dune and clifftop plant communities, and their relationships to regional and environmental factors. Given that nearly 30 years have passed since these surveys were undertaken, there is strong potential for shifts in geographical range and changes in species composition due to the long-term impacts of climate change. The *Survey of Remnant Vegetation of the Southern Fleurieu Peninsula* involved biological surveys conducted between 1987 and 1991 to establish baseline data on remnant vegetation and swamps in the region south of Adelaide, South Australia.

During the development of this plan, and through the assessment of flora and fauna (both native and introduced) species lists available via the Biological Database of South Australia (BDBSA), significant gaps were identified between recorded species and known species distributions within cells. To address these data deficiencies and improve the accuracy of long-term ecological records, both above foundational vegetation survey projects should be repeated and incorporated into an ongoing monitoring program. Fauna assessments across cells to establish population baselines, update existing records and species distribution, particularly of underrepresented groups (reptiles and invertebrates) should be undertaken.

There is opportunity for collaboration between partners, such as National Parks, Marine Parks, First Nations, landscape boards, community and nature-based tourism operators for monitoring of seabirds, coastal raptors, marine mammals and other wildlife.

Supporting community volunteer, First Nations and land manager efforts to undertake priority restoration and conservation work in this cell. Strengthening partnerships with adjoining landowners, volunteer organisations, researchers, and the wider community to foster collaboration and long-term management benefits for biodiversity protection and restoration.

### **Creeks and estuaries**

Maintenance of natural conditions in creeks and estuaries depends on integrated catchment management. Land use that minimises the negative impacts to the stream, including limited water extraction, the reestablishment of native vegetation, and exclusion of stock from creek lines, should be encouraged on private land within the cell and throughout the catchment.

Control of existing and protection from weed incursion, development, disturbance, restriction of stock access watercourses and beaches, increased restoration and community awareness of local value of vegetation communities is required in this cell. Potential habitats of the EPBC Act's critically endangered Fleurieu Swamps ecological community - *Leptospermum lanigerum tall shrublands* - should be investigated across the creek lines and gullies of this cell, working with private landholders to identify any remaining habitats and support for restoration activities where opportunities exist.

## **Climate change threats to coastal biodiversity (See BMT 2025)**

### **Potential climate change threats to coastal biodiversity**

Cell F16 includes high cliffs, sloping boulder-strewn platforms and sandy beach pockets, as well as inshore reef ecosystems. The reef supports a number of temperate species of fauna and flora; however, this is generally a high energy shore.

Biodiversity assets potentially vulnerable to climate change in this cell include:

- Native vegetation
- Creek and estuary ecosystems
- Cliffs
- Reef ecosystems

These ecosystems may be particularly vulnerable to the direct impacts of climate change, particularly sea level rise, coastal erosion, increased drought, higher temperatures and more intense storms.

Over time increasing aridity will stress remnant vegetation and slow natural recovery from damage. Seasonal run-off in small creeks will be drastically reduced by soil water budget changes, however, unpredictable intense rainstorms will locally cause fast run-off in small catchments (Caton et al 2007).

Marine heatwaves place further stress on temperate reefs and seagrasses, reducing biodiversity. Higher atmospheric temperatures will lead to increased marine heatwaves, loss of species in the intertidal, with longer than experience to grow back due to increased stressors e.g. loss of sediment. Higher sea surface temperatures increase the potential for algal blooms.

Changes in ocean temperatures, salinity, and acidity (from increased CO<sub>2</sub> levels) can directly affect the health of temperate reefs. Warmer waters and increased acidification may hinder the growth of calcareous organisms, such as marine molluscs and phytoplankton.

Changes in wave climate, likely to increase the long period swell component, would accentuate high tide changes to backshores in pocket beaches. Tide and water depth dependent habitats on reefs will be impacted by sea level rise (Caton et al 2007).

## Cell Action Table

| Component  | Issue  | Proposed Action   | Priority              | Key Players  |
|------------|--|---|-----------------------|--|
| Whole cell | Threats and opportunities to improve protection of cultural heritage within cell.  | Cultural consultation and collaboration to appropriately manage cultural heritage within this area.<br><br>Prevent damage, disturbance, or interference to cultural heritage by adhering to the Aboriginal Heritage Act 1988.   | High (cons/ threat)   | NAC, Council, NPWSSA, LHF, Coastal Community groups, Aboriginal Affairs and Reconciliation - Department of Premier and Cabinet |
|            | Increased visitation and recreational pressure on coastal areas, dunes and viewing points due to increased visitor population and tourist promotion. | Assess increased visitation capacity at known sites, repair or upgrade fencing to restrict unauthorised access and review car parking capacity. Manage visitor numbers within sustainable limits in ecologically and culturally sensitive and significant areas - consult with First Nations groups.  | High (cons/ threat)   | NPWSSA, land managers, NAC, Friends of Heysen Trail  |
|            |  | Investigate opportunities for community education and engagement regarding unique and valuable coastal landscape and fragile nature of coastal areas. Dedicated cultural education and training for land managers, agency staff and land stewards   | High (Cons/ Soc)      | Council, LHF, NPWSSA, NAC, coastal community groups, Community groups  |
|            |  | Opportunity to work with nature-based tourism operators to increase education and stewardship of local coastal environments, ensuring that tourism is conducted in partnership with First Nations with cultural obligation.   | Medium (Cons)         | Council, land managers, NAC, NPWSSA, coastal community groups  |
|            |  | Development of consistent signage and messaging for coastal values and compliance for conservation areas (public managed lands, coastal reserves) across the Fleurieu Peninsula coast. Co-design signage with First Nations/ knowledge holders.   | Medium (Soc/ Cons)    | Council, land managers, NAC, NPWSSA, coastal community groups  |
|            |  | Collaborate and manage access with event managers to ensure protection of coastal areas and groups do not impact high conservation or cultural value areas and species.   | Medium (cons/ threat) | NPWSSA, Council, NAC   |
|            |  | Monitor aquatic activities (boating, paddleboard and jet skis) for increased pressures on local coastal habitats and fauna species interactions. Access to pocket beaches via boats and aquatic vessels.  | High (threat)         | NPWSSA, Council and land managers  |
|            |  | Events on beaches and coastal habitats must not impact on natural values, especially listed threatened species and communities, in the area or vicinity of events. Event organisers should be informed, where appropriate via permits, on their obligations to not inflict environmental harm and to undertake actions in accordance with relevant legislation and by-laws. | Medium (threat)       | Council, DEW, NPWSSA, BirdLife Australia, event managers   |
|            | Lack of low impact access to spectacular coastal scenery due to large areas of private land ownership.   | Improve signage, awareness and maintain the Heysen Trail, (whole cell).   | Medium (Soc / Econ)   | DEW, NPWSSA  |
|            | Weed species population and spread across cell from grazing land threatens high value remnant vegetation patches.                                    | Control weed species particularly declared, WONS and red alert species.   | High (Cons/ Threat)   | Land owners, DEW, Friends of Heysen Trail  |
|            |  | Monitor changes to dunes through BushRAT or similar monitoring to measure condition assessment and change.  | High (cons/ threat)   | Council, DEW, NPWSSA, LHF, Community Groups.   |
|            | Crown Coastal reserve and large public and private ownership of coastal cliff line between Kings Head and Cape Jervis.                               | Consider program with land owners for Landscape scale conservation and connectivity (restore coastal cliff and heath communities).  | High (cons)           | DEW, NPWSSA, LHF, NAC, Land managers, Council, coastal community groups  |

| Component  | Issue   | Proposed Action   | Priority               | Key Players  |
|------------|---|---|------------------------|--|
| Whole cell | Crown Coastal reserve and large public and private ownership of coastal cliff line between Kings Head and Cape Jervis.                            | Fence cliff line from incursion to prevent grazing and erosion on cliff lines and coastal slopes.   | High (Cons/Threat)     | Land owners  |
|            |   | Assessment of rare plants and remnant grass and coastal heath communities across coastal cliffs.  | High (cons)            | DEW, LHF, land owners, NPWSSA  |
|            | Increasing grazing pressure from native and introduced species.   | Coordinate with regional grazing pressure programs (kangaroos, deer and goats) to monitor populations and control as required to protect remnant vegetation and revegetation efforts. | High (cons/threat)     | NPWSSA, DEW, PIRSA, LHF, NAC business/contractors/rangers land owners  |
|            | Threat to coastal fauna and flora from pest animals (rabbits, foxes and cats).  | Coordinated collaboration between landowners and managers is required to manage pest animals.   | High (threat)          | Councils, land owners, NAC business/contractors/rangers, LHF   |
|            |   | Report sightings of feral animals (deer, fox, rabbit, cat and declared species) through the feral scan pest animal recording and management tool                                      | High (threat)          | Land managers, community, coastal community groups   |
|            | Butterfly habitats and host plant protection.   | Identify locations of potential butterfly habitats and host plants with the cell.   | High (Cons / threat)   | Council, DEW, LHF, coastal community groups  |
|            |   | Extension of existing habitats and reintroduction of locally extinct butterfly species.   | Medium (Cons / threat) | Council, DEW, LHF, NAC business/contractors/rangers, coastal community groups                                    |
|            |   | Undertake survey of cell to identify diversity of species within cell and potential habitats for restoration and reintroduction.  | Medium (cons)          | Council, LHF, coastal community groups   |
|            | High value habitat for coastal raptors (White-bellied Sea Eagle, Wedge tailed eagle and Osprey).  | Ongoing monitoring and management of high values nesting and foraging areas.  | High (cons)            | NPWSSA, DEW, LHF, NAC business/contractors/rangers, Council  |
|            |   | Implement the recovery plan for Eastern Osprey and White-bellied Sea Eagles (2022).   | High (cons)            | DEW, NPWSSA, LHF   |
|            | High value habitat for marine mammals, important migratory corridor for Southern Right and Humpback Whales.                                       | Continue monitoring and management of migratory areas and compliance of impact causing activities.  | High (cons/threat)     | DEW, NPWSSA, SA Whale Centre, NAC business/contractors/rangers Encounter Whales                                  |
|            | Coordinated approach to monitoring of coastal wildlife.   | Collaboration between land manager and stakeholders to support research and citizen science of beach-nesting birds, seabird, coastal raptors, marine mammals and other wildlife.      | Medium (cons)          | DEW, NPWSSA, Birdife Australia, NAC business/contractors/rangers LHF, Council, SA Whale Centre, Encounter Whales |
|            | Aged baseline data and significant gaps in recorded flora and fauna species across the Southern Fleurieu region.                                  | Repeat and integrate historical vegetation surveys into a long-term monitoring program to update records and address data deficiencies.   | Medium (cons/ threat)  | DEW, LHF, councils, coastal community groups   |
|            |   | Undertake fauna assessments across cells to establish baselines, update records and species distribution, particularly of underrepresented groups (reptiles and invertebrates).       | Medium (cons/ threat)  | DEW, LHF, councils, coastal community groups   |
|            |   | Identify potential funding sources to repeat these long-term flora monitoring sites and fauna assessments.  | High (cons/ threat)    | DEW, LHF, councils.  |
|            | Potential habitats of the EPBC Act's critically endangered Fleurieu Swamps ecological community - <i>Leptospermum lanigerum tall shrublands</i> . | Investigations of creek lines and gullies with private landholders to identify any remaining habitats and support for restoration activities where opportunities exist.               | High (Cons)            | LHF, DEW, Land owners  |

| Component   | Issue  | Proposed Action  | Priority   | Key Players  |
|---|--|--|--|--|
| Whole cell  | Physical changes on the coast and natural assets from sea level rise (such as coastal squeeze on tidal habitats, erosion, vegetation loss, marine turbidity and light reduction) | Continue monitoring of coastal habitats to detect change.<br><br>Support partnerships for ongoing investigation and monitoring in the coastal zone, working with the Coast Protection Board to identify adaptation options for the future. | High (Cons. Threat)  | CPB, Council, community, university and research agencies, consultancies   |
| Cliffs and lower slopes of valleys  | Accelerated erosion from grazing pressure on steep slopes, causing episodic raised turbidity levels in coastal waters.   | Monitor erosion sites and areas of cliff instability and implement prevention measures.  | Medium (Threat)  | Land owners, NPWSSA, DEW, NAC business/contractors/rangers, LHF  |
|   |  | For cliffs and lower valley slopes undergoing accelerated erosion, negotiate improved land management practices and rehabilitation programs with landholders.  | Medium (Threat)  | LHF, Land owners   |
| Cliff lines, coastal dunes and remnant vegetation pockets   | Protection of significant flora and fauna.   | Protect existing populations through priority weed control. Propagate local plants for reintroduction to other sites to maintain genetic diversity and increase source populations.  | High (Cons / threat)   | NPWSSA, DEW, land managers, LHF, NAC business/contractors/rangers, coastal community groups, local coastal plant nurseries                                 |
|   |  | Targeted interventions for threatened/rare plant species and communities.  | High (Cons / threat)   | DEW, NPWSSA, LHF, NAC business/contractors/rangers, land owners, Friends of Heysen Trail   |
|   | Grazing and weed infestation threaten the sustainability of the dune, (and beach).   | Negotiate improved land management practices with landholders to protect biodiversity values.  | Medium (threat)  | Land owners, LHF   |
|   |  | Fencing to exclude stock from the beach and dune.  | High (threat)  | Land owners, NAC business/contractors/rangers, LHF   |
|   |  | Weed eradication and re-vegetation program for the dunes.  | Medium (threat/cons)   | Land owners, NAC business/contractors/rangers, LHF   |
|   | Estuaries and creek lines  | Stock grazing to small creeks and on beaches, leading to pollution of small estuaries.   | Maintain, repair and improve fencing of estuaries and riparian land against stock. | High (Threat)  |
| Areas of vegetation within the floodplain needs recognition through proactive management of erosion by revegetation and restoration: assess opportunities to establish buffers from weed invasion and threat. |  |  | High (Cons / threat)   | Land owners, NAC business/contractors/rangers, managers  |
| Impact of reduced flow and reduced water quality on aquatic biodiversity values.  |  | Review opportunities to measure and increase environmental flow opportunities through Water Allocation Planning (WAP), low flow bypass on farm dams and other local opportunities to improve connectivity with marine environments.        | High (cons)  | DEW, LHF, land owners  |
| Limited monitoring data of estuary flow and opening and closing durations exist for these estuaries.  |  | Monitoring of estuaries to determine the connectivity and functionality with marine ecosystems.  | High (cons/ threat)  | LHF, NPWSSA, DEW   |
| Weed incursion within estuaries reducing biodiversity values.   |  | Active control of weed populations within estuary areas.   | High (threat)  | Land owners, NAC business/contractors/rangers, managers, LHF   |
| Beach-nesting birds   | Hooded Plover nests and breeding areas threatened by disturbance by walkers and dogs.  | Community monitoring of remote beaches and breeding activities. Signage and awareness raising activities to Wild South Coast Way/Heysen Trail walkers.   | High (Cons / threat)   | Council, BirdLife Australia, LHF, NAC business/contractors/rangers, Friends of the Hooded Plover, Fleurieu Peninsula volunteers, coastal community groups. |

| Component                                 | Issue   | Proposed Action   | Priority             | Key Players  |
|---|---|---|----------------------|--|
| Beach-nesting birds                       | Predation of birds, nests and chicks on beaches limiting nesting activity and breeding success.   | Regional pest control strategies implemented and seasonal protection of breeding sites.   | High (cons/threat)   | Council, NPWSSA, LHF, BirdLife Australia   |
|   |   | Collaborate with land managers to manage foxes within the cell to support Hooded Plover populations and outcomes for lambing on private property. | High (cons/threat)   | LHF, land owners, NPWSSA, DEW  |
|   | Incursion of multiple dune grass weed species is limiting suitable habitat for beach-nesting birds.   | Support the staged removal of introduced weedy grasses and restoration of spinifex dunes.   | High (Cons / threat) | Council, land managers, LHF, NAC business/contractors/rangers, coastal community groups, Friends of the Hooded Plover, Fleurieu Peninsula volunteers |
|   |   | Increase community awareness of habitat needs for beach-nesting bird species.   | Medium (cons)        | Council, land managers, LHF, coastal community groups, Friends of the Hooded Plover, Fleurieu Peninsula volunteers                                   |
|   | Remote pocket beaches provide valuable breeding sites for Hooded Plovers.   | Maintain access through partnerships with private land owners to ensuring monitoring of these beaches is continued.                               | High (cons)          | LHF, BirdLife Australia, DEW, NAC business/contractors/rangers, NPWSSA,  |
| Nearshore Habitats (Reef)                 | Sediments and nutrients from cliff top erosion and small creeks.  | Support initiatives for catchment revegetation and improved land management practices.  | High (cons/threat)   | City of Victor Harbor, District Council of Yankalilla, LHF   |
|   |   | Monitor catchment and stormwater impact on nearshore habitats and reefs across the cell.  | High (Threat)        | Council, DEW, EPA, SA Water, LHF   |
| Climate (Cliffs and rocky headlands)      | More intense rainfall events likely to increase soil erosion.   | Restoration of native plant species to assist soil stabilisation.   | High (Cons/threat)   | DEW, land owners, coastal community groups, NAC business/contractors/rangers, LHF  |
|   | Increased aridity likely to make growing conditions less suitable to native vegetation fragments.   | Restoration of native plant species to assist soil stabilisation.   | High (Cons/threat)   | DEW, land owners, coastal community groups, NAC business/contractors/rangers, LHF  |
|   | Increased sea levels contribute to more frequent and intense wave action, which accelerates cliff erosion.  | Restoration of native plant species to assist soil stabilisation.   | Medium (threat)      | DEW, land owners, coastal community groups, NAC business/contractors/rangers, LHF  |
| Climate (Creek/ Estuary)                  | More intense rainfall events likely to lead to increased pollutants, nutrients and sediments washed into the estuary especially during first flush from the landward end. | Monitor stormwater quality and estuary condition.   | Medium (threat)      | Council, NPWSSA, DEW, LHF, land owners   |
|   | Higher temperatures likely to lead to increased algal blooms with impacts on estuarine fauna.   | Monitor stormwater quality and estuary condition.   | Medium (threat)      | Council, NPWSSA, DEW, LHF, land owners   |
| Climate (Beach and dunes)                 | Increased sea levels contribute to more frequent and intense wave action, which accelerates beach and dune erosion.   | Implement restoration of native plant species.  | Medium (threat)      | NPWSSA, coastal community groups, NAC business/contractors/rangers, LHF  |
|   |   | Support cultural monitoring and communications to protect significant known heritage sites  | High (threat)        | NAC, First nations business/contractors/rangers, Council, DEW, LHF, coastal community groups   |
| Climate (Macroalgal reefs and seagrasses) | More intense rainfall events likely to lead to increased pollutants, nutrients and suspended sediments washed into coastal waters especially during first flush.          | Monitor stormwater quality.   | Medium (threat)      | Council, DEW, LHF  |
|   | Increased storm surge can cause dislodgment of algae and seagrasses.  | Monitor stormwater quality.   | Medium (threat)      | NPWSSA, DEW, LHF   |
|   |   | Undertake restoration and monitoring of benthic flora.  | Medium (threat)      | NPWSSA, DEW, LHF   |

| Component                                    | Issue  | Proposed Action   | Priority        | Key Players           |
|--|--|---|-----------------|-----------------------|
| Climate<br>(Macroalgal reefs and seagrasses) | Higher temperatures can lead to increased incidence and persistence of marine heatwaves and increased stress on temperate reefs and seagrasses, reducing biodiversity. | Monitor stormwater quality.   | Medium (threat) | NPWSSA, DEW, LHF      |
|  | Ocean acidification can impact the life history of marine species.   | Monitor stormwater quality.<br><br>Undertake benthic flora mapping to determine areas or opportunities for restoration. | Medium (threat) | NPWSSA, DEW, LHF      |
|  |  | Undertake benthic flora mapping to determine areas or opportunities for restoration.                                    | High (cons)     | DEW, Landscape Boards |

## Relevant management plans

- Biodiversity and Natural Assets Management Plan: 2023 to 2028 (2023) City of Victor Harbor
- Environmental Management Plan: 2025 – 2030 (2025) City of Victor Harbor
- Encounter Marine Park Management Plan (2012, amended 2020). Department for Environment and Water.
- Caton B. Fotheringham D. Lock C. Royal M, Sandercock R. Taylor R. (2007). Southern Fleurieu Coastal Action Plan and Conservation Priority Study. Prepared for Adelaide and Mount Lofty NRM Board, Alexandrina Council, City of Victor Harbor, District Council of Yankalilla, Goolwa to Wellington Local Action Plan and Department for Environment and Heritage.
- Landscapes Hills and Fleurieu (2024) Hills and Fleurieu Regional Pest Plant and Animal Strategy 2024 - 2029.
- Ngarrindjeri Nation (2007) Ngarrindjeri Nation Yarlular-Ruwe Plan. Caring for Ngarrindjeri Sea Country and Culture. (Ngarrindjeri Tendi, Ngarrindjeri Heritage Committee and Ngarrindjeri Native Title Management Committee, Ngarrindjeri Land and Progress Association, Meningie).
- Ngarrindjeri and Others Native Title Claim (Part A) settlement Indigenous Land Use Agreement (ILUA) (2017) Government of SA Attorney General's Department
- Kungun Ngarrindjeri Yunnan Agreement (2009) between South Australian Government and the Ngarrindjeri Regional Authority (NRA).
- Maguire, G. S. (2008). A practical guide to managing beach-nesting birds in Australia. Birds Australia, Melbourne, Australia.
- Resource Condition Assessment Southern Fleurieu Estuaries (2014), Prepared by Telfer, S. and Milne, T. (Ecological Evaluation Pty Ltd) for Adelaide and Mount Lofty Ranges Natural Resources Management Board.
- South Australian Recovery Plan for Eastern Osprey and White-bellied Sea Eagle (2022) Department for Environment and Water
- Biological Review of the Freshwater Fishes of the Western Mount Lofty Ranges. Report to Green Adelaide, Department for Environment and Water. South Australian Research and Development Institute (Aquatic Sciences), (2022). Schmarr, D. Thwaites, L. & Peters, K. Adelaide. SARDI Publication No. F2022/000250-1. SARDI Research Report Series No. 1148. 116pp
- Stolarski A., (2024) Southern Fleurieu Peninsula coastal butterfly species assessment, A revision of the Butterfly Section of the Southern Fleurieu Coastal Action Plan and Conservation Priority Study 2007.
- BMT (2025), Climate Change Threats to Coastal Biodiversity in the Southern Fleurieu Region. Report prepared for Hills and Fleurieu Landscape Board as part of the review of the Southern Fleurieu Coastal Action Plan and Conservation Priority study (2007). BMT, Adelaide.
- District Council of Yankalilla Community Land Management Plan 2019

## References

- Baker, J.L. and Gurgel, C.F.D. (2010) Biodiversity and conservation of macroalgae in the Adelaide and Mt Lofty Ranges NRM region including an assessment of biodiversity and distribution of macroalgae in the Gulf St Vincent bioregion. Report to the Adelaide and Mount Lofty Ranges Natural Resources Management Board. J.L. Baker (Marine Ecologist) and School of Earth and Environmental Sciences, University of Adelaide.
- BMT (2025), Climate Change Threats to Coastal Biodiversity in the Southern Fleurieu Region. Report prepared for Hills and Fleurieu Landscape Board as part of the review of the Southern Fleurieu Coastal Action Plan and Conservation Priority study (2007). BMT, Adelaide.
- Brock D., Brook J., Mellin C., Peters K., Bryars S., Hicks J., Miller D., Easton D. and Meakin, C. (2023). Green Adelaide Rocky Reef Program: Trends in the condition of rocky reef ecosystems of the greater Adelaide and Fleurieu Peninsula region, South Australia. DEW Technical report 2023/79, Government of South Australia, Department for Environment and Water, Adelaide
- Brook J, Peters K, Bryars S, Owen S, Hicks J, Miller D, Easton D, Eglinton Y, Meakin C and Brock D (2020). Subtidal Reef Health Program: Baseline status of subtidal reefs and associated biodiversity patterns in the AMLR region. DEW Technical report DEW-TR-2020-01.
- Bryars, S. (2003) An Inventory of Important Coastal Fisheries Habitats in South Australia. Fish Habitat Program, (Primary Industries and Resources South Australia: Adelaide).
- Bryars, S. (2013) Nearshore marine habitats of the Adelaide and Mount Lofty Ranges NRM region: values, threats and actions. Report to the Adelaide and Mount Lofty Ranges Natural Resources Management Board, Dr Simon Richard Bryars, Adelaide.
- Caton, B., Fotheringham, D., Lock C., Royal, M., Sandercock, R., Taylor, R., 2007. *Southern Fleurieu coastal action plan and conservation priority study*, prepared for Adelaide & Mount Lofty Ranges Natural Resources Management Board, Alexandrina Council, City of Victor Harbor, District Council of Yankalilla, Goolwa to Wellington Local Action Plan and Department for Environment & Heritage.
- DAWE (2013) Conservation Advice for the *swamps of the Fleurieu Peninsula* ecological community. Department of Agriculture, Water and the Environment.
- Dennis, T. E. (2006). Status and distribution of the Wedge-tailed Eagle on the Fleurieu Peninsula, South Australia in 2005. *South Australian Ornithologist* 35: 38-46.
- Department for Environment and Heritage (2007) Adelaide and Mount Lofty Ranges Natural Resources Management Region Estuaries Information Package. Department for Environment and Heritage, Adelaide.
- Department for Environment and Heritage (2008). Marine Habitats in the Adelaide and Mount Lofty Ranges NRM Region. Final Report to the Adelaide and Mount Lofty Ranges Natural Resources Management Board for the program: Facilitate Coast, Marine and Estuarine Planning and Management by Establishing Regional Baselines. Prepared by the Department for Environment and Heritage, Coast and Marine Conservation Branch.
- Department for Environment and Water (2022). South Australian Recovery Plan for Eastern Osprey and White-bellied Sea Eagle
- Edgar, G., Barrett, N., Brook, J., McDonald, B. and Bloomfield, A. (2006) Ecosystem monitoring inside and outside proposed sanctuary zones with the Encounter marine park – 2005 baseline surveys. TAFI Internal Report, 36 pp.
- Edgar, G., and Barrett, N. (2012). An assessment of population responses of common inshore fishes and invertebrates following declaration of five Australian marine protected areas. *Environmental Conservation*, 39(3), 271-281.
- Edgar, G., and Stuart-Smith, R. (2014). Systematic global assessment of reef fish communities by the Reef Life Survey program. *Sci Data* 1, 140007.
- Edgar, G.J., Cooper, A., Baker, S.C., Barker, W., Barrett, N.S., Becerro, M.A., Bates, A.E., Brock, D., Ceccarelli, D.M., Clausius, E., Davey, M., Davis, T.R., Day, P.B., Green, A., Griffiths, S.R., Hicks, J., Hinojosa, I.A., Jones, B.K., Kininmonth, S., Larkin, M.F., Lazzari, N., Lefcheck, J.S., Ling, S.D., Mooney, P., Oh, E., Perez-Matus, A., Pocklington, J.B., Riera, R., Sanabria-Fernandez, J.A., Seroussi, Y., Shaw, I., Shields, D., Shields, J., Smith, M., Soler, G.A., Stuart-Smith, J., Turnbull, J., Stuart-Smith, R.D., (2020) Establishing the ecological basis for conservation of shallow marine life using Reef Life Survey, *Biological Conservation*, Volume 252.

Haig J., Russell B. and Murray-Jones S. (2006). Offshore marine habitat mapping and near-shore marine biodiversity within the Coorong bioregion. Report to Murray–Darling Basin NRM Board. 74 pp. Department for Environment and Heritage, Adelaide.

Opperman, A., 1999, A Biological Survey of the South Australian Coastal Dune and Clifftop Vegetation, Environment Protection Agency, Department for Environment, Heritage and Aboriginal Affairs, Adelaide.

Rowe, E., Brinsley, R., and Dennis, T. (2018) A review of Wedge-tailed Eagle population stability in the Fleurieu Peninsula region of South Australia in 2017. *South Australian Ornithologist* 43: 27- 37.

Schmarr, D. Thwaites, L. & Peters, K. (2022). Biological Review of the Freshwater Fishes of the Western Mount Lofty Ranges. Report to Green Adelaide, Department for Environment and Water. South Australian Research and Development Institute (Aquatic Sciences), Adelaide. SARDI Publication No. F2022/000250-1. SARDI Research Report Series No. 1148. 116pp

Short, A.D. (2001) Beaches of the South Australian Coast and Kangaroo Island: A guide to their nature, characteristics, surf and safety. Australian Beach Safety and Management Program, Sydney.

Stolarski A., (2024) Southern Fleurieu Peninsula coastal butterfly species assessment, A revision of the Butterfly Section of the Southern Fleurieu Coastal Action Plan and Conservation Priority Study 2007.

Telfer, S. and Milne, T. (2014) Resource Condition Assessment Southern Fleurieu Estuaries, Prepared by Ecological evaluation Pty Ltd for Adelaide and Mount Lofty Ranges Natural Resources Management Board.

Turner D., Kildea T. & Westphalen G. (2007). Examining the health of subtidal reef environments in SA. 2. Status of selected reefs based on the results of the 2005 surveys. SARDI Publication No. RD 03/0252-6. SARDI, Adelaide.

## Cell Biota (Flora and Fauna)

Lists provided are specific to this cell from Biological Database of South Australia (BDBSA), technical updates, review of publications and local input. Conservation ratings (National, State and Sub regional) are included for flora and fauna.

Note: Restricted species as per Department for Environment and Water (DEW) specifications have been omitted from the tables due to the size of cells and requirement for 10km<sup>2</sup> buffering of data. However, records are included in the total species numbers per cell. Please contact DEW directly for restricted data requests

### FLORA Summary

|   |   |                    |                        |                   |
|---|---|--------------------|------------------------|-------------------|
| <b>Vegetation Block Metrics</b>                       | Unalienated Crown Land parcel along cliff line (length of cell)<br>Heritage agreement (ref 126) approx.. 38 Ha  |                    |                        |                   |
| <b>Terrestrial Habitat Description/s</b>              | See Terrestrial biodiversity vegetation communities in cell description.  |                    |                        |                   |
| <b># Flora in cell</b>                                | 94  |                    |                        |                   |
| <b># Native Flora in cell</b>                         | 58  |                    |                        |                   |
| <b># Introduced Flora in cell</b>                     | 36  |                    |                        |                   |
| <b># Conservation Rated Flora in cell</b>             | 3 (1 national, 1 state)   |                    |                        |                   |
| <b># Threatened Ecological Communities (EPBC Act)</b> | 1 ( <i>Leptospermum lanigerum</i> tall shrublands part of the Nationally Critically Endangered ecological community called "Swamps of the Fleurieu Peninsula")<br>(Pending assessment- to be confirmed by survey) |                    |                        |                   |
| <b>Conservation Rated Flora</b>                       | <b>Species</b>  | <b>Common Name</b> | <b>EPBC Act Status</b> | <b>NPW Status</b> |
|   | <i>Correa eburnea</i>   | Deep Creek Correa  | EN                     | V                 |
|   | <i>Eucalyptus fasciculosa</i> <sup>^</sup>  | Pink Gum           |                        | R                 |
|   | <i>Xanthorrhoea semiplana ssp. tateana</i> <sup>^</sup>   | Tate's Grass-tree  |                        | R                 |

### All Native Flora in cell

| <b>Species</b>                                 | <b>Common Name</b> | <b>EPBC Status</b> | <b>NPW Act Status</b> | <b>Subregional Status*</b> |
|--|--------------------|--------------------|-----------------------|----------------------------|
| <i>Acacia paradoxa</i>                         | Kangaroo Thorn     |                    |                       | LC                         |
| <i>Acacia pycnantha</i> <sup>^</sup>           | Golden Wattle      |                    |                       |                            |
| <i>Acaena novae-zelandiae</i>                  | Biddy-biddy        |                    |                       | LC                         |
| <i>Adiantum aethiopicum</i>                    | Common Maiden-hair |                    |                       | LC                         |
| <i>Allocasuarina verticillata</i> <sup>^</sup> | Drooping Sheoak    |                    |                       |                            |
| <i>Apium annuum</i>                            | Annual Celery      |                    |                       | RA                         |
| <i>Austrostipa spp.</i> <sup>^</sup>           | Spear Grass        |                    |                       |                            |
| <i>Austrostipa stipoides</i>                   | Coast Spear-grass  |                    |                       | VU                         |
| <i>Callistemon sieberi</i> <sup>^</sup>        | River Bottlebrush  |                    |                       |                            |
| <i>Cassinia complanata</i>                     | Sticky Cassinia    |                    |                       |                            |
| <i>Centrolepis polygyna</i>                    | Wiry Centrolepis   |                    |                       | NT                         |
| <i>Convolvulus remotus</i>                     | Grassy Bindweed    |                    |                       | LC                         |
| <i>Correa eburnea</i>                          | Deep Creek Correa  | EN                 | V                     | VU                         |
| <i>Cotula vulgaris var. australasica</i>       | Slender Cotula     |                    |                       | NT                         |
| <i>Cycnogeton procerum</i> <sup>^</sup>        | Water-ribbons      |                    |                       |                            |
| <i>Cyperus vaginatus</i> <sup>^</sup>          | Stiff Flat-sedge   |                    |                       |                            |
| <i>Dichondra repens</i>                        | Kidney Weed        |                    |                       | LC                         |
| <i>Disphyma crassifolium ssp. clavellatum</i>  | Round-leaf Pigface |                    |                       | LC                         |

| Species   | Common Name                | EPBC Status | NPW Act Status | Subregional Status* |
|---|----------------------------|-------------|----------------|---------------------|
| <i>Distichlis distichophylla</i>                        | Emu-grass                  |             |                | LC                  |
| <i>Einadia nutans ssp. nutans</i>                       | Climbing Saltbush          |             |                | LC                  |
| <i>Enchylaena tomentosa var. tomentosa</i>              | Ruby Saltbush              |             |                | LC                  |
| <i>Eucalyptus fasciculosa</i> <sup>^</sup>              | Pink Gum                   |             | R              |                     |
| <i>Ficinia nodosa</i>                                   | Knobby Club-rush           |             |                | LC                  |
| <i>Gonocarpus mezianus</i> <sup>^</sup>                 | Broad-leaf Raspwort        |             |                |                     |
| <i>Goodenia amplexans</i>                               | Clasping Goodenia          |             |                | NT                  |
| <i>Isolepis cernua</i>                                  | Nodding Club-rush          |             |                | LC                  |
| <i>Juncus caespiticius</i>                              | Grassy Rush                |             |                | NT                  |
| <i>Juncus kraussii</i>                                  | Sea Rush                   |             |                | LC                  |
| <i>Lachnagrostis billardierei ssp. billardierei</i>     | Coast Blown-grass          |             |                | RA                  |
| <i>Lepidosperma curtisiae</i>                           | Little Sword-sedge         |             |                | NT                  |
| <i>Lepidosperma semiteres</i> <sup>^</sup>              | Wire Rapier-sedge          |             |                |                     |
| <i>Lepidosperma viscidum</i>                            | Sticky Sword-sedge         |             |                | LC                  |
| <i>Leptospermum lanigerum</i> <sup>^</sup>              | Silky Tea-tree             |             |                |                     |
| <i>Leucophyta brownii</i>                               | Coast Cushion Bush         |             |                | LC                  |
| <i>Leucopogon parviflorus</i>                           | Coast Beard-heath          |             |                | LC                  |
| <i>Lobelia anceps</i>                                   | Angled Lobelia             |             |                | LC                  |
| <i>Lomandra densiflora</i>                              | Soft Tussock Mat-rush      |             |                | LC                  |
| <i>Lomandra effusa</i> <sup>^</sup>                     | Scented Mat-rush           |             |                |                     |
| <i>Lomandra multiflora ssp. dura</i> <sup>^</sup>       | Hard Mat-rush              |             |                |                     |
| <i>Muehlenbeckia gunnii</i>                             | Coastal Climbing Lignum    |             |                | LC                  |
| <i>Myoporum insulare</i>                                | Common Boobialla           |             |                | LC                  |
| <i>Olearia axillaris</i> <sup>^</sup>                   | Coast Daisy-bush           |             |                |                     |
| <i>Olearia ramulosa</i> <sup>^</sup>                    | Twiggy Daisy-bush          |             |                |                     |
| <i>Oxalis perennans</i>                                 | Native Sorrel              |             |                | LC                  |
| <i>Phragmites australis</i> <sup>^</sup>                | Common Reed                |             |                |                     |
| <i>Poa poiformis var. poiformis</i>                     | Coast Tussock-grass        |             |                | LC                  |
| <i>Puccinellia stricta</i>                              | Australian Saltmarsh-grass |             |                | NT                  |
| <i>Rhagodia candolleana ssp. candolleana</i>            | Sea-berry Saltbush         |             |                | LC                  |
| <i>Rytidosperma racemosum var. racemosum</i>            | Slender Wallaby-grass      |             |                | LC                  |
| <i>Rytidosperma spp.</i> <sup>^</sup>                   | Wallaby Grass              |             |                |                     |
| <i>Samolus repens</i>                                   | Creeping Brookweed         |             |                | NT                  |
| <i>Senecio pinnatifolius group</i>                      | Variable Groundsel         |             |                |                     |
| <i>Sporobolus virginicus</i>                            | Salt Couch                 |             |                | LC                  |
| <i>Tetragonia implexicoma</i>                           | Bower Spinach              |             |                | LC                  |
| <i>Thyridia repens</i>                                  | Creeping Monkey-flower     |             |                | RA                  |
| <i>Triglochin striata</i>                               | Streaked Arrowgrass        |             |                | LC                  |
| <i>Typha domingensis</i>                                | Narrow-leaf Bulrush        |             |                | LC                  |
| <i>Xanthorrhoea semiplana ssp. tateana</i> <sup>^</sup> | Tate's Grass-tree          |             | R              |                     |

<sup>^</sup> denotes records from technical updates, review of publications and local input

\*See Appendices for subregional map

Regional Conservation status, Mount Lofty Ranges IBRA (Interim Biogeographical Regionalisation for Australia) subregion (Gillam & Urban (2014). Regional Species Conservation Assessment Project, Phase 1 Report - Regional Species Status Assessments, Adelaide and Mount Lofty Ranges NRM Region. DEWNR: SA)

RE = Regionally Extinct    CR = Critically Endangered    EN = Endangered  
VU = Vulnerable    RA = Rare    NT = Near Threatened  
LC = Least Concern    DD = Data Deficient    NE = Not Evaluated

## All Introduced Flora in cell

| Species                                  | Common Name              | Red Alert Weeds | Declared Weeds | WONS |
|--|--------------------------|-----------------|----------------|------|
| <i>Arctotheca calendula</i>              | Cape Weed                | HP              |                |      |
| <i>Avena barbata</i>                     | Bearded Oat              |                 |                |      |
| <i>Briza maxima</i>                      | Large Quaking-grass      |                 |                |      |
| <i>Briza minor</i>                       | Lesser Quaking-grass     |                 |                |      |
| <i>Bromus diandrus</i>                   | Great Brome              |                 |                |      |
| <i>Bromus hordeaceus ssp. hordeaceus</i> | Soft Brome               |                 |                |      |
| <i>Bromus madritensis</i>                | Compact Brome            |                 |                |      |
| <i>Callitriche stagnalis</i>             | Common Water Starwort    |                 |                |      |
| <i>Carduus tenuiflorus*</i>              | Slender Thistle          |                 |                |      |
| <i>Cirsium vulgare</i>                   | Spear Thistle            |                 |                |      |
| <i>Cotula coronopifolia</i>              | Water Buttons            |                 |                |      |
| <i>Ehrharta calycina</i>                 | Perennial Veldt Grass    | HP              |                |      |
| <i>Euphorbia paralias</i>                | Sea Spurge               | HP              |                |      |
| <i>Euphorbia terracina*</i>              | False Caper              | HP              | Yes            |      |
| <i>Gaudium laevigatum*</i>               | Coast Tea-tree           |                 | Yes            |      |
| <i>Gladiolus tristis*</i>                | Evening-flower Gladiolus | HP              |                |      |
| <i>Hordeum glaucum</i>                   | Blue Barley-grass        |                 |                |      |
| <i>Hypochaeris glabra</i>                | Smooth Cat's Ear         |                 |                |      |
| <i>Hypochaeris radicata</i>              | Rough Cat's Ear          |                 |                |      |
| <i>Lagurus ovatus</i>                    | Hare's Tail Grass        |                 |                |      |
| <i>Lolium loliaceum</i>                  | Stiff Ryegrass           |                 |                |      |
| <i>Lysimachia arvensis</i>               | Pimpernel                |                 |                |      |
| <i>Parapholis incurva</i>                | Curly Ryegrass           |                 |                |      |
| <i>Paspalum vaginatum</i>                | Salt-water Couch         |                 |                |      |
| <i>Plantago coronopus ssp. commutata</i> | Bucks-horn Plantain      |                 |                |      |
| <i>Polycarpon tetraphyllum</i>           | Four-leaf Allseed        |                 |                |      |
| <i>Polypogon monspeliensis</i>           | Annual Beard-grass       |                 |                |      |
| <i>Senecio pterophorus*</i>              | African Daisy            |                 |                |      |
| <i>Solanum linnaeanum</i>                | Apple Of Sodom           | HP              | Yes            |      |
| <i>Solanum nigrum</i>                    | Black Nightshade         |                 |                |      |
| <i>Sonchus oleraceus</i>                 | Common Sow-thistle       |                 |                |      |
| <i>Thinopyrum junceiforme*</i>           | Sea Wheat-grass          | IC              |                |      |
| <i>Trifolium angustifolium</i>           | Narrow-leaf Clover       |                 |                |      |
| <i>Trifolium campestre</i>               | Hop Clover               |                 |                |      |
| <i>Trifolium scabrum</i>                 | Rough Clover             |                 |                |      |
| <i>Vulpia myuros f.</i>                  | Fescue                   |                 |                |      |

**WONS** = Weeds of National Significance.

**Declared** = Declared under the Landscape South Australia Act 2019. Pest plants that are a significant threat to agriculture, the natural environment and public health and safety are called declared plants. Land owners have a legal responsibility to manage these plants.

**Red Alert** = Weed Threat Level of four or greater out of nine. Plants in this category are either designated as requiring immediate control (IC – 6-9) or as a high priority for control (HP – 4-5). See Department for Environment and Water (2024)

**Reference** – Department for Environment and Water (2024). Threatening Processes - Environmental and Priority Weed Species. Southern Fleurieu Coastal Action Plan Review 2024. Prepared by SA Herbarium

## FAUNA Summary

|                                    |                           |
|------------------------------------|---------------------------|
| # Fauna in cell                    | 78                        |
| # Native Fauna in cell             | 67                        |
| # Introduced Fauna in cell         | 11                        |
| # Conservation Rated Fauna in cell | 12 (3 national, 11 state) |

| Conservation Rated Fauna                               |                              |       |                 |                |
|--|------------------------------|-------|-----------------|----------------|
| Species  | Common Name                  | Class | EPBC Act Status | NPW Act Status |
| <i>Actitis hypoleucos</i> <sup>^</sup>                 | Common Sandpiper             | AVES  |                 | R              |
| <i>Falco peregrinus macropus</i> <sup>^</sup>          | Peregrine Falcon             | AVES  |                 | R              |
| <i>Haematopus fuliginosus fuliginosus</i> <sup>^</sup> | Sooty Oystercatcher          | AVES  |                 | R              |
| <i>Haliaeetus leucogaster</i> <sup>^</sup>             | White-bellied Sea Eagle      | AVES  |                 | E              |
| <i>Larus dominicanus dominicanus</i> <sup>^</sup>      | Kelp Gull                    | AVES  |                 | R              |
| <i>Neophema elegans elegans</i> <sup>^</sup>           | Elegant Parrot               | AVES  |                 | R              |
| <i>Pandion haliaetus cristatus</i> <sup>^</sup>        | Eastern Osprey               | AVES  |                 | E              |
| <i>Platycercus elegans</i>                             | Crimson Rosella              | AVES  | ssp             |                |
| <i>Thinornis cucullatus cucullatus</i>                 | Hooded Plover                | AVES  | VU              | V              |
| <i>Zanda funerea whiteae</i> <sup>^</sup>              | Yellow-tailed Black Cockatoo | AVES  |                 | V              |
| <i>Antechinus flavipes</i> <sup>^</sup>                | Yellow-footed Antechinus     | MAM   |                 | V              |
| <i>Tachyglossus aculeatus</i> <sup>^</sup>             | Short-beaked Echidna         | MAM   | ssp             | ssp            |

## All Native Fauna in cell

| Species Name   | Common Name              | Class | EPBC Act Status | NPW Act Status | Subregional Status |
|--|--------------------------|-------|-----------------|----------------|--------------------|
| <i>Galaxias brevipinnis</i>                            | Climbing Galaxias        | ACT   |                 |                |                    |
| <i>Galaxias maculatus</i>                              | Common Galaxias          | ACT   |                 |                | VU                 |
| <i>Pseudaphritis urvillii</i>                          | Congolli                 | ACT   |                 |                | EN                 |
| <i>Acanthagenys rufogularis</i>                        | Spiny-cheeked Honeyeater | AVES  |                 |                | LC                 |
| <i>Actitis hypoleucos</i> <sup>^</sup>                 | Common Sandpiper         | AVES  |                 | R              | RA                 |
| <i>Anthochaera carunculata</i>                         | Red Wattlebird           | AVES  |                 |                | LC                 |
| <i>Aquila audax audax</i> <sup>^</sup>                 | Wedge-tailed Eagle       | AVES  |                 |                | RA                 |
| <i>Ardea alba modesta</i>                              | Great Egret              | AVES  |                 |                | RA                 |
| <i>Chroicocephalus novaehollandiae novaehollandiae</i> | Silver Gull              | AVES  |                 |                | LC                 |
| <i>Cincloramphus cruralis</i>                          | Brown Songlark           | AVES  |                 |                | LC                 |
| <i>Colluricincla harmonica</i>                         | Grey Shrikethrush        | AVES  |                 |                | LC                 |
| <i>Corvus coronoides</i>                               | Australian Raven         | AVES  |                 |                |                    |
| <i>Corvus mellori</i>                                  | Little Raven             | AVES  |                 |                | LC                 |
| <i>Egretta novaehollandiae</i>                         | White-faced Heron        | AVES  |                 |                | LC                 |
| <i>Egretta sacra</i> <sup>^</sup>                      | Eastern Reef Egret       | AVES  |                 |                |                    |
| <i>Eolophus roseicapilla</i>                           | Galah                    | AVES  |                 |                | LC                 |
| <i>Falco cenchroides cenchroides</i>                   | Nankeen Kestrel          | AVES  |                 |                | LC                 |
| <i>Falco peregrinus macropus</i> <sup>^</sup>          | Peregrine Falcon         | AVES  |                 | R              | RA                 |
| <i>Gavicalis virescens</i>                             | Singing Honeyeater       | AVES  |                 |                | LC                 |
| <i>Grallina cyanoleuca cyanoleuca</i>                  | Magpielark               | AVES  |                 |                | LC                 |
| <i>Gymnorhina tibicen</i>                              | Australian Magpie        | AVES  |                 |                | LC                 |
| <i>Haematopus fuliginosus fuliginosus</i> <sup>^</sup> | Sooty Oystercatcher      | AVES  |                 | R              | VU                 |
| <i>Haliaeetus leucogaster</i> <sup>^</sup>             | White-bellied Sea Eagle  | AVES  |                 | E              | EN                 |

| Species Name  | Common Name                          | Class | EPBC Act Status | NPW Act Status | Subregional Status |
|---|--------------------------------------|-------|-----------------|----------------|--------------------|
| <i>Hirundo neoxena neoxena</i>                            | Welcome Swallow                      | AVES  |                 |                | LC                 |
| <i>Hydroprogne caspia</i>                                 | Caspian Tern                         | AVES  |                 |                | LC                 |
| <i>Larus dominicanus dominicanus</i> <sup>^</sup>         | Kelp Gull                            | AVES  |                 | R              | RA                 |
| <i>Larus pacificus georgii</i> <sup>^</sup>               | Pacific Gull                         | AVES  |                 |                | LC                 |
| <i>Malurus cyaneus leggei</i>                             | Superb Fairywren (Mainland SA)       | AVES  |                 |                |                    |
| <i>Microcarbo melanoleucos melanoleucos</i>               | Little Pied Cormorant                | AVES  |                 |                | LC                 |
| <i>Neochmia temporalis temporalis</i>                     | Red-browed Finch                     | AVES  |                 |                | NT                 |
| <i>Neophema elegans elegans</i> <sup>^</sup>              | Elegant Parrot                       | AVES  |                 | R              | RA                 |
| <i>Ocyphaps lophotes lophotes</i>                         | Crested Pigeon                       | AVES  |                 |                | LC                 |
| <i>Pandion haliaetus cristatus</i> <sup>^</sup>           | Eastern Osprey                       | AVES  |                 | E              |                    |
| <i>Pelecanus conspicillatus</i>                           | Australian Pelican                   | AVES  |                 |                | LC                 |
| <i>Petrochelidon nigricans</i>                            | Tree Martin                          | AVES  |                 |                | LC                 |
| <i>Phalacrocorax fuscescens</i> <sup>^</sup>              | Black-faced Cormorant                | AVES  |                 |                | NT                 |
| <i>Phalacrocorax sulcirostris</i> <sup>^</sup>            | Little Black Cormorant               | AVES  |                 |                | LC                 |
| <i>Phylidonyris novaehollandiae novaehollandiae</i>       | New Holland Honeyeater (mainland SA) | AVES  |                 |                |                    |
| <i>Platycercus elegans</i>                                | Crimson Rosella                      | AVES  | ssp             |                | LC                 |
| <i>Rhipidura albiscapa</i>                                | Grey Fantail                         | AVES  |                 |                | LC                 |
| <i>Rhipidura leucophrys leucophrys</i>                    | Willie Wagtail                       | AVES  |                 |                | LC                 |
| <i>Sericornis frontalis rosinae</i>                       | White-browed Scrubwren (MLR)         | AVES  |                 |                |                    |
| <i>Thalasseus bergii cristatus</i> <sup>^</sup>           | Greater Crested Tern                 | AVES  |                 |                | LC                 |
| <i>Thinornis cucullatus cucullatus</i>                    | Hooded Plover                        | AVES  | VU              | V              | EN                 |
| <i>Threskiornis spinicollis</i>                           | Straw-necked Ibis                    | AVES  |                 |                | LC                 |
| <i>Vanellus miles</i>                                     | Masked Lapwing                       | AVES  |                 |                | LC                 |
| <i>Zanda funerea whiteae</i> <sup>^</sup>                 | Yellow-tailed Black Cockatoo         | AVES  |                 | V              | RA                 |
| <i>Zapornia pusilla palustris</i>                         | Baillon's Crake                      | AVES  |                 |                | DD                 |
| <i>Danaus petilia</i> <sup>^</sup>                        | Lesser Wanderer                      | INV   |                 |                |                    |
| <i>Danaus plexippus Plexippus</i> <sup>^</sup>            | Monarch                              | INV   |                 |                |                    |
| <i>Heteronympha merope merope</i> <sup>^</sup>            | Common Brown                         | INV   |                 |                |                    |
| <i>Junonia villida calybe</i> <sup>^</sup>                | Meadow Argus                         | INV   |                 |                |                    |
| <i>Lampides boeticus</i> <sup>^</sup>                     | Long-tailed Pea-blue                 | INV   |                 |                |                    |
| <i>Nacaduba biocellata biocellata</i> <sup>^</sup>        | Two-spotted Line-blue                | INV   |                 |                |                    |
| <i>Ocybadistes walkeri hypochlora</i> <sup>^</sup>        | Southern Grass-dart                  | INV   |                 |                |                    |
| <i>Pieris rapae rapae</i> <sup>^</sup>                    | Cabbage White                        | INV   |                 |                |                    |
| <i>Taractrocera papyria papyria</i> <sup>^</sup>          | White-banded Grass-dart              | INV   |                 |                |                    |
| <i>Theclinesstes miskini miskini</i> <sup>^</sup>         | Wattle Blue                          | INV   |                 |                |                    |
| <i>Theclinesstes serpentatus serpentatus</i> <sup>^</sup> | Salt-bush Blue                       | INV   |                 |                |                    |
| <i>Vanessa itea</i> <sup>^</sup>                          | Australian Admiral                   | INV   |                 |                |                    |
| <i>Vanessa kershawi</i> <sup>^</sup>                      | Australian Painted Lady              | INV   |                 |                |                    |
| <i>Zizina otis labradus</i> <sup>^</sup>                  | Common Grass-blue                    | INV   |                 |                |                    |
| <i>Antechinus flavipes</i> <sup>^</sup>                   | Yellow-footed Antechinus             | MAM   |                 | V              |                    |
| <i>Macropus fuliginosus</i> <sup>^</sup>                  | Western Grey Kangaroo                | MAM   |                 |                | LC                 |
| <i>Pseudocheirus peregrinus</i> <sup>^</sup>              | Common Ringtail Possum               | MAM   |                 |                |                    |
| <i>Tachyglossus aculeatus</i> <sup>^</sup>                | Short-beaked Echidna                 | MAM   | ssp             | ssp            |                    |
| <i>Ctenophorus decresii (revised)</i>                     | Tawny Rock Dragon                    | REP   |                 |                |                    |

**Class:** ACT = Actinopteri, AMP = Amphibia, AVES = Aves, INV = Invertebrates, MAM = Mammalia, REP= Reptilia

## All Introduced Fauna in cell

| Species                             | Common Name              |
|-------------------------------------|--------------------------|
| <i>Capra hircus</i> ^               | Goat                     |
| <i>Cervus dama</i> ^                | Fallow Deer              |
| <i>Columba livia</i> ^              | Feral Pigeon             |
| <i>Felis catus</i> ^                | Domestic Cat (Feral Cat) |
| <i>Lepus capensis</i> ^             | Brown Hare               |
| <i>Mus musculus</i> ^               | House Mouse              |
| <i>Oryctolagus cuniculus</i> ^      | Rabbit (European Rabbit) |
| <i>Passer domesticus domesticus</i> | House Sparrow            |
| <i>Spilopelia chinensis</i>         | Spotted Dove             |
| <i>Sturnus vulgaris vulgaris</i>    | Common Starling          |
| <i>Vulpes vulpes</i>                | Fox (Red Fox)            |



Scan or click here to view the full  
**Southern Fleurieu Coastal Action Plan**  
[hf.landscape.sa.gov.au/SFCAP](http://hf.landscape.sa.gov.au/SFCAP)

Published by the Hills and Fleurieu Landscape Board  
 2026 | FIS 1107263